

org is an online platform, collecting, describing, presenting and generating documents of all sorts. It documents documents.

Your path through the collection lead along A DONNER, Garage Paul > Garage Robert (collection of 2023), We were a modern house, Crocodile Copy, Desiccation, CLOSED NO POWER. For prescriptions go to Walgreens 2690 Mission OPEN UNTIL 5 PM., Slightly Askew (2), The Authenticity in the woods of the Bosque Protector de Arraiján, Two Sparta K-10s, Owned by Fred and Partner, The Saddle of a Sparta K-10, Rue Verte, Brussels, Quarry, Pipe, 300 year old seaweed, Dome, Wheelhouse (replica), Gatun Locks, Negative sheet 02, negative 5, negative 6, Slightly Askew (1), 300 year old seaweed, It's Pouring, Mirror

What constitutes a 'document' and how does it function?

According to the *Oxford English Dictionary*, the etymological origin is the Latin 'documentum', meaning 'lesson, proof, instance, specimen'. As a verb, it is 'to prove or support (something) by documentary evidence', and 'to provide with documents'. The online version of the *OED* includes a draft addition, whereby a document (as a noun) is 'a collection of data in digital form that is considered a single item and typically has a unique filename by which it can be stored, retrieved, or transmitted (as a file, a spreadsheet, or a graphic)'. The current use of the noun 'document' is defined as '*something* written, inscribed, etc., which furnishes evidence or information upon any subject, as a manuscript, title-deed, tomb-stone, coin, picture, etc.' (emphasis added).

Both 'something' and that first 'etc.' leave ample room for discussion. A document doubts whether it functions as something unique, or as something reproducible. A passport is a document, but a flyer equally so. Moreover, there is a circular reasoning: to document is 'to provide with documents'. Defining (the functioning of) a document most likely involves ideas of communication, information, evidence, inscriptions, and implies notions of objectivity and neutrality – but the document is neither reducible to one of them, nor is it equal to their sum. It is hard to pinpoint it, as it disperses into and is affected by other fields: it is intrinsically tied to the history of media and to important currents in literature, photography and art; it is linked to epistemic and power structures. However ubiquitous it is, as an often tangible thing in our environment, and as a concept, a document *deranges*.

the-documents.org continuously gathers documents and provides them with a short textual description, explanation, or digression, written by multiple authors. In *Paper Knowledge*, Lisa Gitelman paraphrases ‘documentalist’ Suzanne Briet, stating that ‘an antelope running wild would not be a document, but an antelope taken into a zoo would be one, presumably because it would then be framed – or reframed – as an example, specimen, or instance’.

The gathered files are all documents – if they weren’t before publication, they now are. That is what the-documents.org, irreversibly, *does*. It is a zoo turning an antelope into an ‘antelope’.

As you made your way through the collection, the-documents.org tracked the entries you viewed.

It documented your path through the website.

As such, the time spent on the-documents.org turned into this – a new document.

This document was compiled by _____ on 29.04.2024 15:18, printed on _____ and contains 21 documents on 44 pages. (<https://the-documents.org/log/29-04-2024-6037/>)

the-documents.org is a project created and edited by De Cleene De Cleene; design & development by atelier Haegeman Temmerman.

the-documents.org has been online since 23.05.2021.

Notes

- De Cleene De Cleene is Michiel De Cleene and Arnout De Cleene. Together they form a research group that focusses on novel ways of approaching the everyday, by artistic means and from a cultural and critical perspective.
www.decleenedecline.be / info@decleenedecline.be
- This project was made possible with the support of the Flemish Government and KASK & Conservatorium, the school of arts of HOGENT and Howest. It is part of the research project *Documenting Objects*, financed by the HOGENT Arts Research Fund.

Sources

- Briet, S. *Qu'est-ce que la documentation?* Paris: Edit, 1951.
- Gitelman, L. *Paper Knowledge. Toward a Media History of Documents.* Durham/ London: Duke University Press, 2014.
- *Oxford English Dictionary Online.* Accessed on 13.05.2021.



Flanders
State of the Art



A snow-covered stainless steel and glass shelf has a note, written in red marker, cello-taped to one of the steel supports: 'A DONNER'.

Now a park, the Place Marie Janson – colloquially called *Carré Moscou* or *Carré Monnaies* – used to house *L'Hôtel des Monnaies/het Munthof*. For a century, the coins of some twenty-two countries were minted in this building.

Sources

- [hotel_monnaies_nl.pdf](#)



type
photograph

date
03.04.2024

filename
_44A8275.dng

size
52,46 MB

author
Michiel De Cleene

category
card, decoration, dusk, precipitation, sign, waste

14:16:16

A year ago I moved into Solange's appartement. From the balcony, I see half the parking lot and the adjacent high rise. On the mailbox, I haven't replaced her name for mine.

1. GARAGE PAUL, (+32) 0489. 764 540 / recto-verso NL/FR
2. CASH 24, (+32) 0466 15 32 16 / recto-verso NL/FR
3. GARAGE NADIM (+32) 0470 606 474 / recto-verso NL (1)
4. GARAGE NADIM (+32) 0470 606 474 / recto-verso FR (2)
5. GARAGE GABRIEL (+32) 0489 76 45 40 / recto-verso NL (1)
6. GARAGE GABRIEL (+32) 0489 76 45 40 / recto-verso FR (2)
7. MAGNUM's (+32) 0492 92 70 70 / recto-verso FR
8. GARAGE ROBERT (+32) 0492 92 70 70 / recto-verso FR (1)
9. GARAGE ROBERT (+32) 0492 92 70 70 / recto-verso FR (2)

I don't know whether Solange owned a car.

Notes



- Bieke Criel, lives and works in Gent (BE). Intrigued by landscape, movement, light and the poetics of what lies in between. Does not own a car, loves to drive one. Part of 019.

GARAGE PAUL

WILT U UW AUTO VERKOPEN ?

NEEM DAN CONTACT MET ONS OP !!
UW AUTO INTERESSEERT ONS !

DIRECT ANTWOORD CASH BETALING !!!

• Voor alle voertuigen (4x4, bestelwagens...) • Zelfs wanneer er geen groot aantal km op de Teller staat • Zonder technische controle • Beschadigd • Met mechanische Problemen. **7/7 et**

GSM. (+32) SMS. **0489. 764 540**

Email: europe.cars.export@gmail.com A.U.B. niet op de openbare weg gooien. Dank u.

GARAGE GABRIEL AUTO EXPORT

Aankopen van alle merken gebruikte voertuigen

Zelfs zonder technische controle beschadigd of met veel km.

Betaling via **OVERSCHRIJVING of CONTANT**

Als u hem wil verkopen nu of later neem contact op met ons!

GSM. / SMS. (+32) **0489 76 45 40**

europe.cars.export@gmail.com

CASH 24 Uw wagen interesseert ons!

AANKOOP GEBRUIKTE AUTO'S

Zelfs zonder keuring, veel km., of beschadigd.

Bij **CASH 24** is uw wagen geld waard, Beste aankoopprijs.

Bel ons gerust! G.S.M. **0466 15 32 16**

24/7

GARAGE GABRIEL AUTO EXPORT

Achats de véhicules d'occasion toutes marques

Même accidentée, beaucoup de km., sans contrôle technique ou en panne

Paiement par **VIEREMENT ou CASH**

Si vous avez envie de la vendre, maintenant ou plus tard contactez-nous!

GSM. / SMS. (+32) **0489 76 45 40**

europe.cars.export@gmail.com

B GARAGE NADIM

Goede dag, u wilt uw auto verkopen, nu of later ?

WIJ KOPEN AAN GOEDE PRIJS.

Zelfs zonder technisch controle of beschadigd.

Contacteer ons via SMS of telefoon!

GSM. (+32) **0470 606 474**

email: alex1965@live.be

A.U.B. niet op de openbare weg gooien! Dank u.

MAGNUM'S

Vendez votre voiture d'occasion facilement et sûrement

Même accidentées ou en panne, sans contrôle technique

GSM. / SMS. (+32) my.auto.be@gmail.com 7/7

0492.92.70.70

B GARAGE NADIM

Bonjour, vous désirez vendre votre voiture, maintenant ou plus tard ?

NOUS LE REPRENONS À UN EXCELLENT PRIX.

Même sans contrôle technique ou accidenté.

Contactez-nous par SMS ou par téléphone!

GSM. (+32) **0470 606 474**

email: alex1965@live.be

Merci de ne pas jeter sur voie publique!

GARAGE ROBERT

ENVIE DE VENDRE VOTRE VÉHICULE ?

PRENEZ CONTACT AVEC NOUS !!
VOTRE VÉHICULE NOUS INTÉRESSE !

• Pour tous véhicules (4x4, camionnette...) • Même avec beaucoup de km. au compteur • Sans contrôle technique • Accidentée • Avec problèmes mécaniques.

GSM. / SMS. (+32) **0492 92 70 70**

my.auto.be@gmail.com

GARAGE ROBERT

ENVIE DE VENDRE VOTRE VÉHICULE ?

PRENEZ CONTACT AVEC NOUS !!
VOTRE VÉHICULE NOUS INTÉRESSE !

• Pour tous véhicules (4x4, camionnette...) • Même avec beaucoup de km. au compteur • Sans contrôle technique • Accidentée • Avec problèmes mécaniques.

GSM. / SMS. (+32) **0492 92 70 70**

my.auto.be@gmail.com

type	date	filename	size	author
scan	17.01.2024	biekecriel_scan_6MB_jpeg_Doc.1_.jpg	6 MB	Bieke Criel

category
archive, automobile, card, collecting

*My dream hollyday We were a football
on the beach*

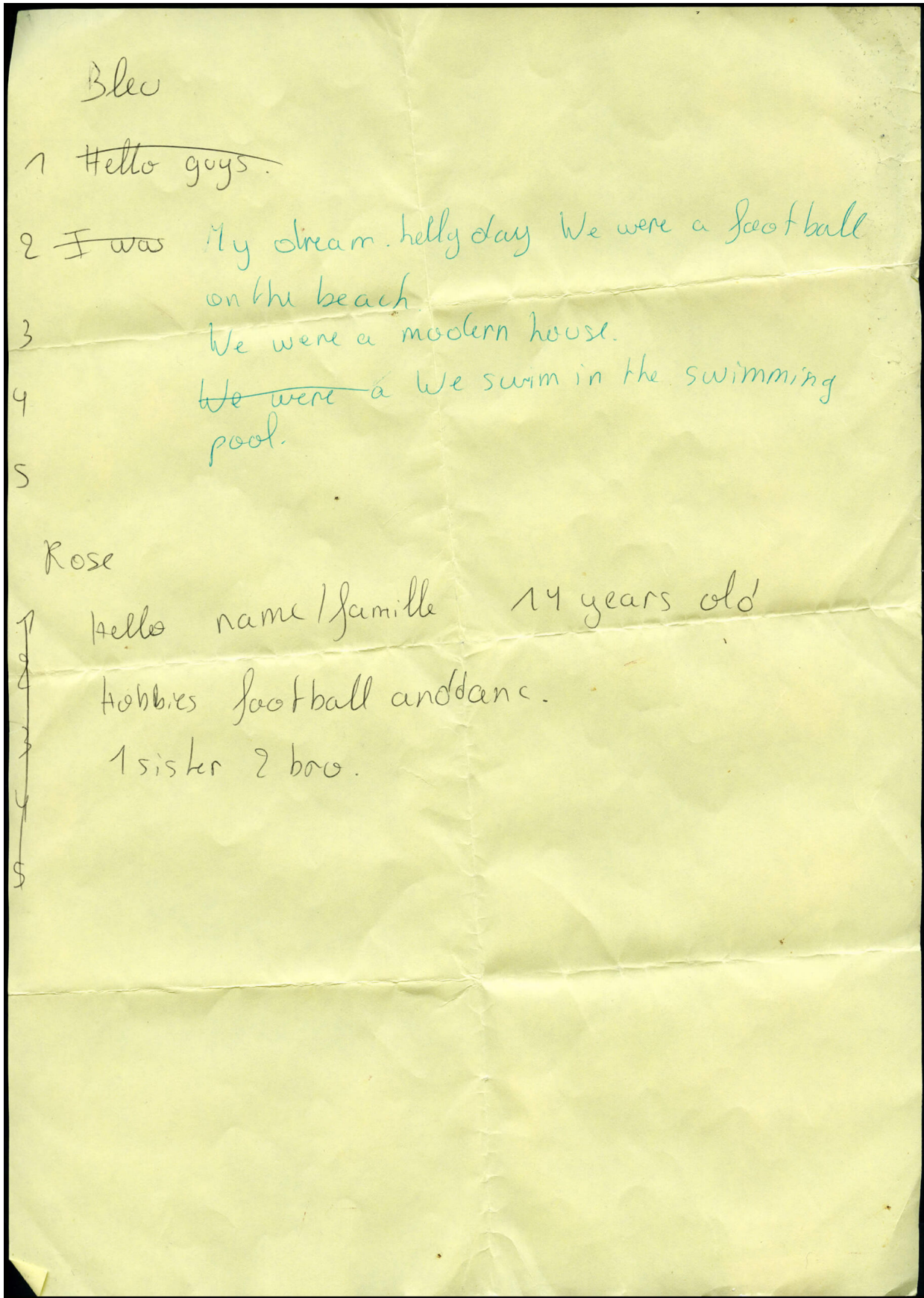
We were a modern house.

*We were a We swim in the swimming
pool.*

June 2022, Marche-en-Famenne. I arrived half an hour early. Waiting for my family to pick me up at the station, near a linden tree, I found a yellow page lying on the pebbles in front of the wooden bench I sat on. It had been a hot day. The sun was finally setting. Music playing in the distance. A white Volkswagen. Windows closed. Hard basses, trembling across the road. Folded three times, the sheet of paper had the size of a DIN A7. A white BMW pulled over. Seven glass jars in a container.

Notes

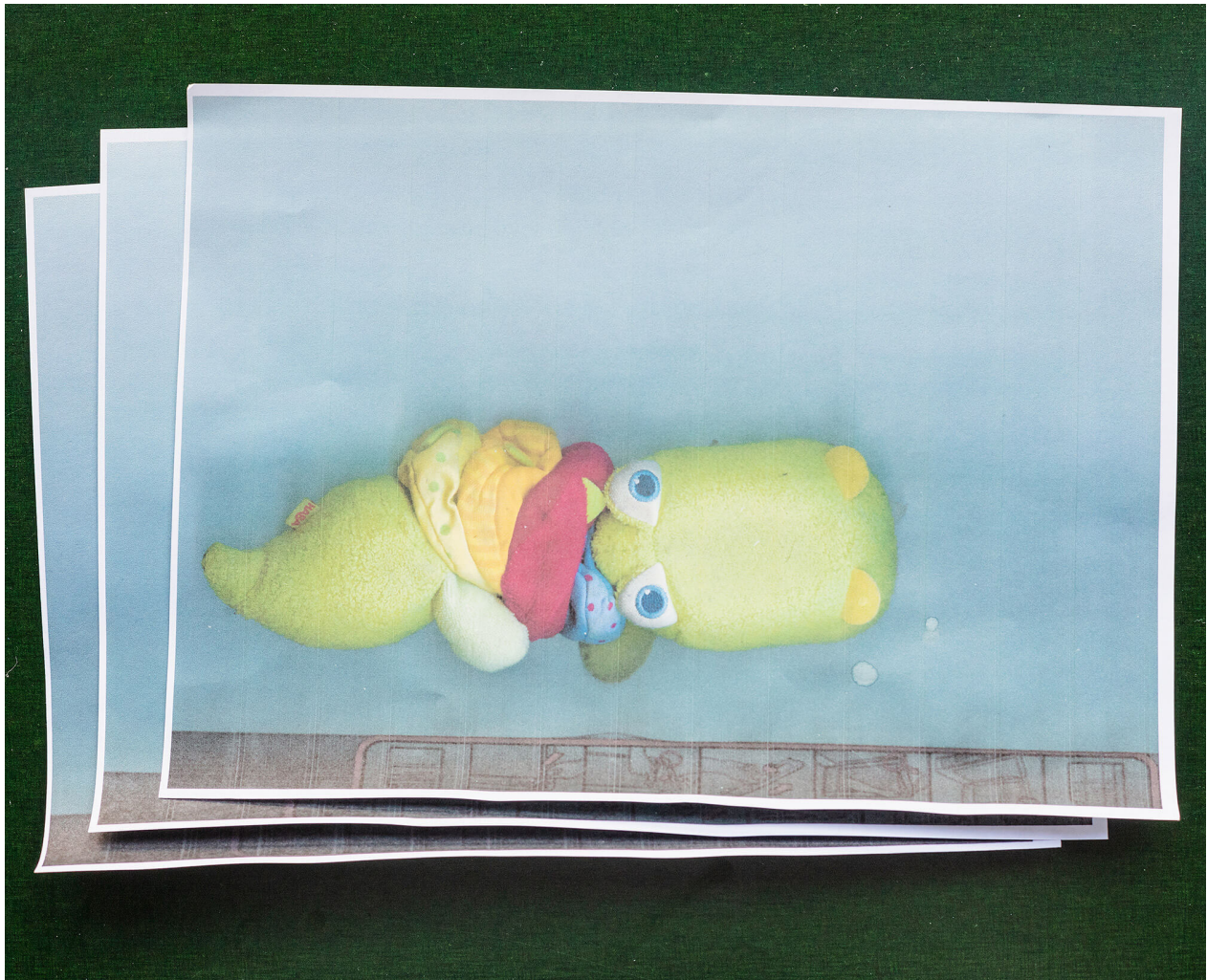




type	date	filename	size	author
scan	20.09.2023	wewereamodernhouse.pdf	10,12 MB	Michiel De Cleene

category
architecture, dusk, encounter, family, tree

Our one year old's favourite toy he's not supposed to play with is the *HP Officejet Pro L7590 All-in-one* in my office. I have given up on forbidding him to play with it. We have a new game: he brings me one of his other toys, we put it on the flatbed, close the lid – as far as possible –, press the button 'START COPY – COLOR' and wait for the print to come out of the machine. When we place the original onto the copy, he laughs. So far we have copied his blue pacifier, his planet-earth-bouncy-ball and his rattling crocodile.



type
photograph

date
16.02.2021

filename
_44A8728.dng

size
50,04MB

author
Michiel De Cleene

category
animal, archive, decoration, house, replica/copy, technology, trompe l'oeil, family

14:16:58

A sheet of brushed aluminium serves as the base for a monochromatic print showing a circular floor plan and seven photographs. The nearby *Prosopis cineraria*, known as the 'Tree of Life', is a well-known tourist attraction in the Arabian Desert near Jebel Dukhan. The plaque shows how the recently constructed concrete structure, circling the four hundred year old tree, allows the visitors to see and photograph the landmark in new and – because of the tree's decentralized position – surprising ways. In summer the temperature can rise well over 40°C. The different expansion rates of the aluminium and its imprint cause the latter to crack.



type
photograph

date
12.12.2020

filename
IMG_4888.HEIC

size
2,2MB

author
Michiel De Cleene

category
Bahrain, botany, drought, map/plan, tree, fissure, sand, sign, physics, scale

14:17:01

[13:42] Maziar: Power out at Rib now.

[13:45] Mathew: It's windy here today, sorry!

[13:45] Maziar: Saying from the comfort of his electrified home, or...you also have no power?

[13:45] Mathew: No, I don't. But, typically, outages in the city are shorter than in regional areas. PG&E website estimates service within two hours...Maybe you could post a business sign on Rib's window?¹

[13:52] Maziar: Yes. Though my phone is almost dead. No light. Can you send me a text for the sign? I can't access the drive.

[13:52] Mathew: Yeah.

[13:52] Maziar: I feel reality hitting. Not so much the reality of blackouts in the U.S., but the reality of life and work...and that it is time to go home.

[13:55] Mathew: "CLOSED NO POWER For prescriptions go to Walgreens 2690 Mission OPEN UNTIL 5 PM."

[13:55] Maziar: Thanks.

[13:56] Mathew: Yeah, maybe it's time for you to leave for the night. I'm going to drive around to see what's happening.

[13:59] Maziar: Okay, enjoy.

Notes

- 1 Local businesses experiencing a blackout typically post handwritten notices on their street-facing windows. These condensed notes detail acute symptoms felt at a community level, hinting at the improvisation required to maintain social harmony.
- Mathew Kneebone is an artist based in San Francisco. His interdisciplinary practices takes different forms, all in relation to an interest in electricity and technology. He teaches studio and thesis writing at California College of the Arts.

CLOSED NO POWER. For prescriptions go to Walgreens
2690 Mission OPEN UNTIL 5 PM.



type
photograph

date
21.02.2023

filename
closed-no-power.jpg

size
641 KB

author
Mathew Kneebone

category
automobile, impact, repair, sign, wind

14:17:07

It must have been four or five years ago, that I noticed the change in Tabasco's® up until then stable, unchanged and thus kind of unfashionable presence in supermarkets (vinegar section). On one of the box's sides, there had always been a photograph of a man, clipboard in hand, looking upwards to a huge wooden barrel full of Tabasco®. He was inspecting something, from the outside, writing it down.

A couple of years ago, the man disappeared from the packaging. I think he was replaced by a pizza (as one of the suggestions for using Tabasco® on, besides on hashed meat (with an egg yolk, fries and lettuce) and spaghetti bolognese) or a black-and-white image of a part of an oak barrel. It is unclear who is inspecting the barrels now.



type
scan

date
29.03.2021

filename
Document_2021-03-29_111649.jpg

size
180KB

author
Arnout De Cleene

category
packaging, food

14:17:10

The Authenticity bunkered crude fuel in the Panama Bay. She navigated back and forth between the artificial island Isla Melones and ships leaving or waiting to enter the Panama Canal. On February 14th 2015 she had been moored for a couple of days near the Centennial bridge when the AIS-transponder momentarily signalled the ship's position in the woods of the Bosque Protector de Arraiján. Afterwards no signal of the ship was received for 41 days, until she reappeared near the port of Bahia Las Minas, at the other side of the Panama Canal.

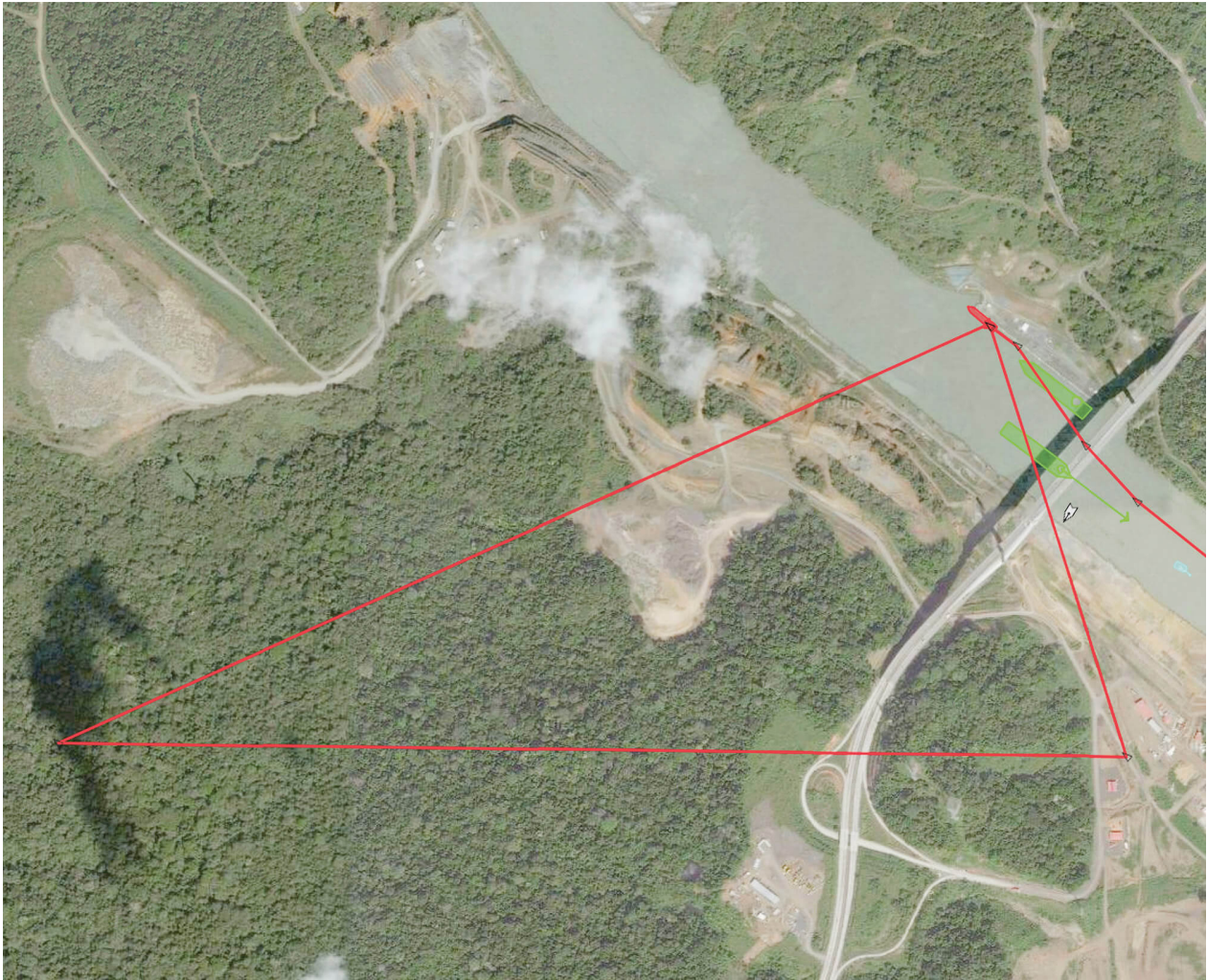
Notes

First published in: De Cleene, M. *Reference Guide*. Amsterdam: Roma Publications, 2019

Sources

Marine Traffic, Authenticity (Caribe Trader, PA), latest position, 09°01'40,71" N 79°38'18,59"W, viewed 14.02.2015, <http://www.marinetraffic.com>

The Authenticity in the woods of the Bosque Protector de Arraiján



type	date	filename	size	author
screenshot	10.05.2021	caribe.jpg	17,33MB	Michiel De Cleene

category
economy, encyclopaedia, interference, landscape, map/plan, Reference Guide, sea, technology, tree, data storage

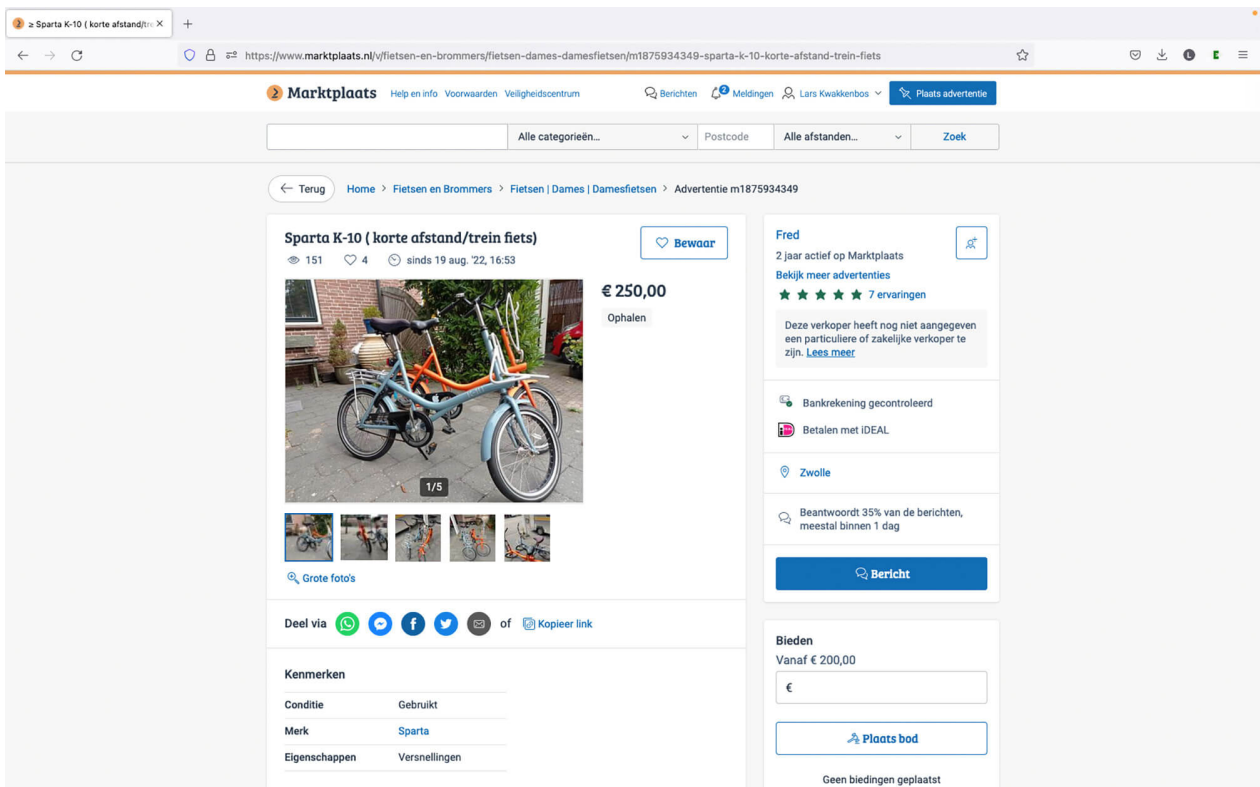
14:17:32

Fred from Zwolle offers two Sparta K-10s on Marktplaats.nl on 29 September 2022. The asking price for the two bikes is 250 euros, bids may start from 200 euros. The green bike has a front light that is powered by a rim dynamo, while in another photo we see a front light on the orange bike that is presumably battery-powered, as may be the case for the rear lights. The carrier mounted at the front of the green bike is clearly a luggage carrier, as is the one at the back. What the carrier mounted at the front of the orange bike is for, is unclear. The description of the bikes does mention the function of the loop protruding from the frame at the back of the Sparta K-10:

‘20-inch bikes that we have always used while camping. No gears but smooth and light pedalling. Ideal for running small errands close by or a quick errand in the toilet building. They are light and quite short making them easy to take on the train. Ideal as a short-distance bike between station and work. Both are, furthermore, in good condition. Each bike comes with a key for the integrated cable lock. Are listed as a ladies’ bike but I (male) get on just fine.’¹

Notes

- 1 ‘20 inch fietsen die wij altijd tijdens het kamperen hebben gebruikt. Geen versnellingen maar soepel en licht trappend. Ideaal om kleine boodschappen dichtbij te doen of een snelle boodschap in het toilet gebouw. Ze zijn licht en vrij kort waardoor ze makkelijk mee te nemen zijn in de trein. Ideaal als korte afstandfiets tussen station en werk. Beiden zijn verder in goede staat. Van elke fiets beide sleutels aanwezig voorzien van een geïntegreerd kabelslot. Worden als damesfiets genoemd maar ik (man) kom er prima mee vooruit.’
- Lars Kwakkenbos lives and works in Brussels and Ghent (B). He teaches at KASK & Conservatorium in Ghent, where he is currently working on the research project ‘On Instructing Photography’ (2023-2024), together with Michiel and Arnout De Cleene.



type
screenshot

date
18.01.2023

filename
Screenshot 2022-09-29 at 12-19-38
Sparta K-10 (korte
afstand_trein fiets) – Fietsen
Dames Damesfietsen –
Marktplaats.png

size
522 KB

author
Lars Kwakkenbos

category
bicycle, economy

How slanted is this saddle? Anyone looking at the full photo of this Sparta K-10 might think that the street fence is pushing its saddle down at an angle. However, the bike and its saddle are leaning against the fence, they are not pushed under it. Whether the saddle is as slanted as the photo suggests, we are not sure. This detail of the photo suggests otherwise. The rail to which the saddle is attached is already mounted slightly less slanted than the line of the fence behind which the saddle is partly hidden, and above that part of the fence something vaguely protrudes from the back of the saddle. Presumably that is the edge of the saddle, which would reassure us about the cyclist's comfort.

Notes

- Lars Kwakkenbos lives and works in Brussels and Ghent (B). He teaches at KASK & Conservatorium in Ghent, where he is currently working on the research project 'On Instructing Photography' (2023-2024), together with Michiel and Arnout De Cleene.



type
photograph

date
22.01.2023

filename
Naamloos.jpg

size
189 KB

author
Lars Kwakkenbos

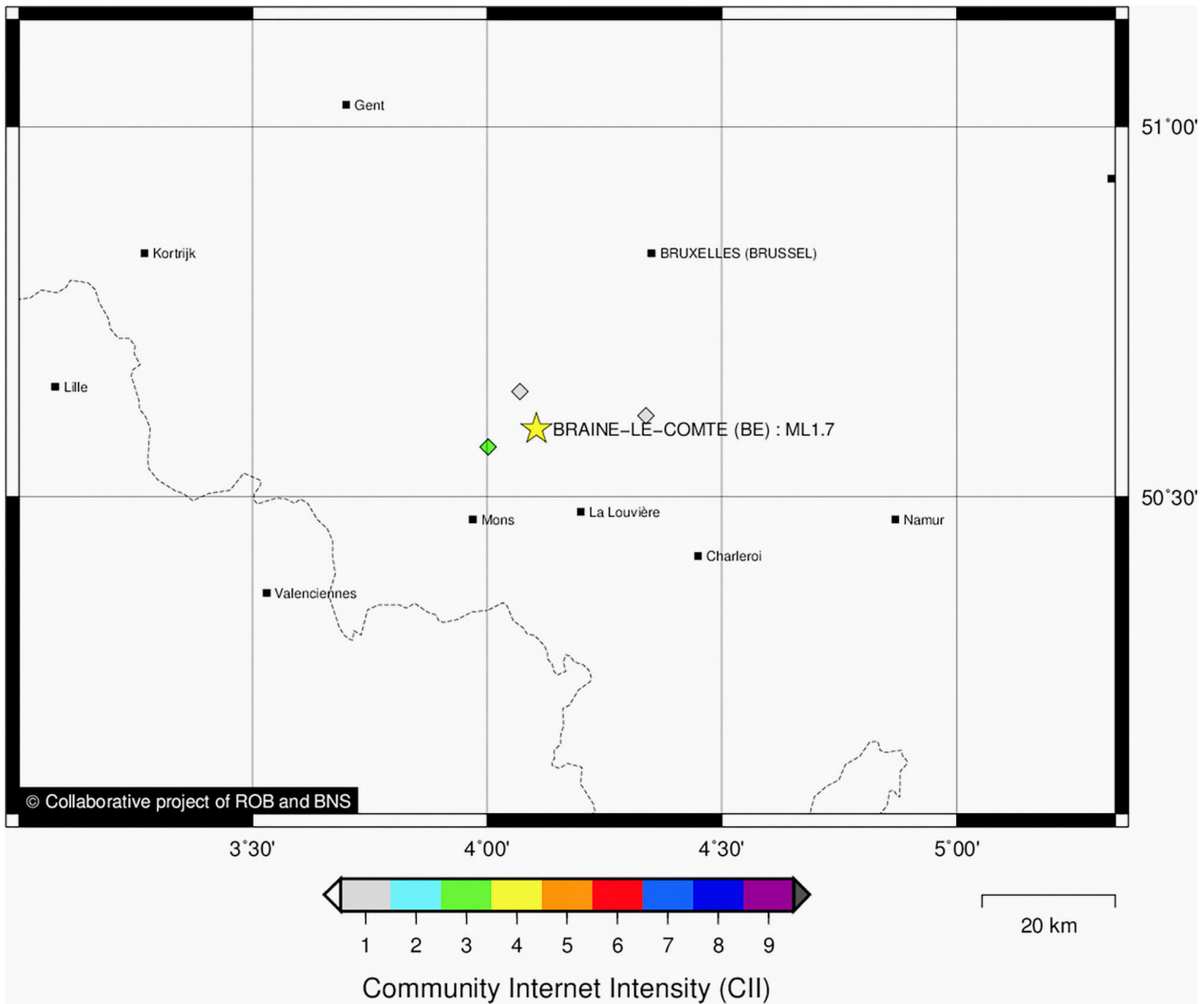
category
bicycle

14:17:45

On May 6th 2020, 14h06 and 31 seconds, the Belgian Seismological Institute records an earthquake with a 1,7 magnitude in the region of Braine-Le-Compte. Three reactions from people in the neighbourhood, filed by the Institute, confirm the official seismological recordings. The Institute's website classifies the earthquake as a 'quarry blast'.

Sources

<http://seismologie.be/nl/seismologie/aardbevingen-in-belgie/en130qj1o>



type
screenshot

date
16.02.2021

filename
9980.png

size
45KB

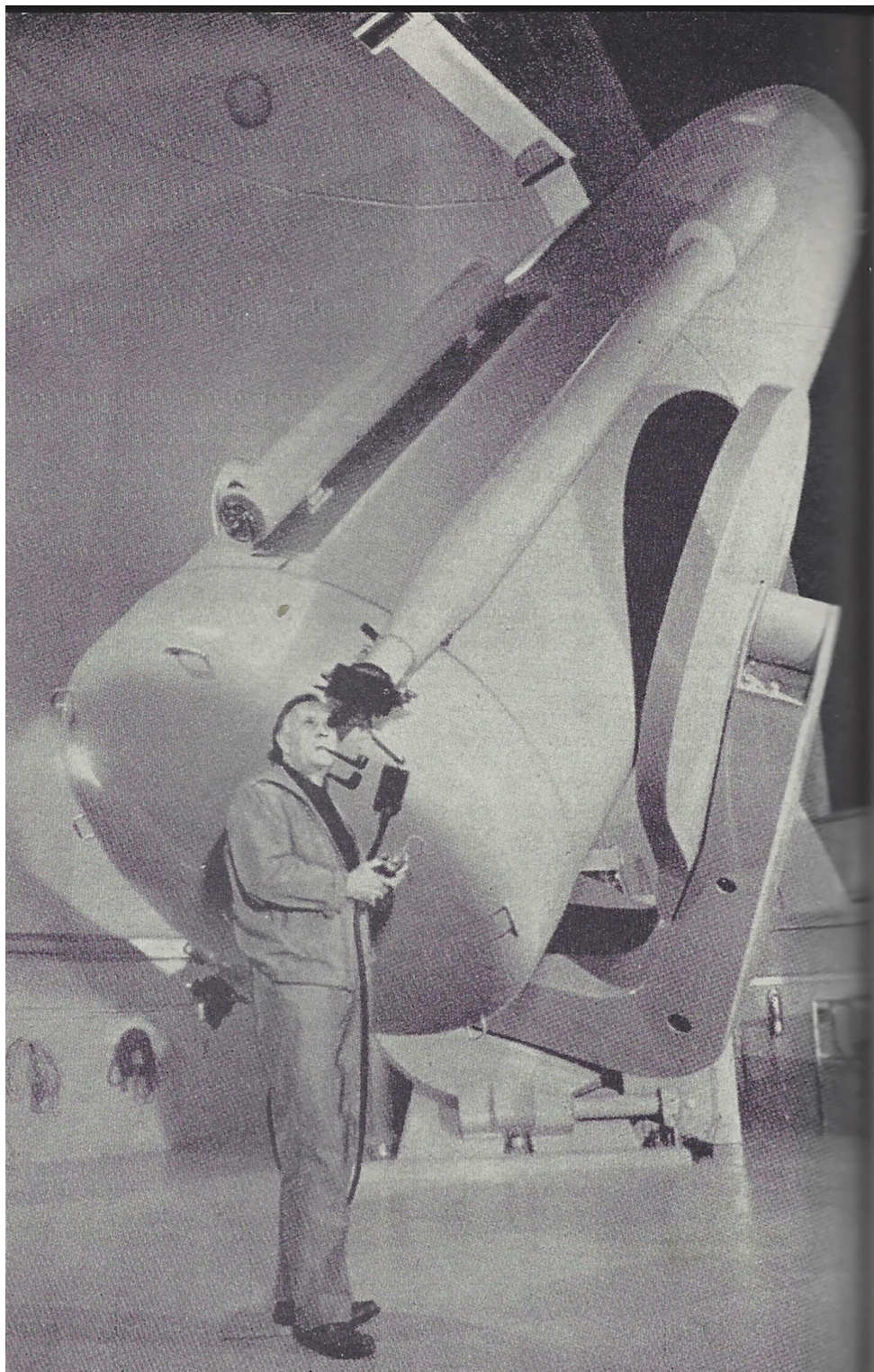
author
Arnout De Cleene

category
data storage, interference, map/plan, scale, seismology, technology

14:17:49

The 48-inch Oschin Schmidt, a renowned reflecting telescope at Palomar Observatory, California, was used for the Palomar Observatory Sky Survey (POSS), published in 1958, one of the largest photographic surveys of the night sky.

Based on the man's pipe shadow's direction, thrown onto the telescope, there is reason to believe an off-camera flash was used to make the picture.



iv. De 48-inch-Schmidtkijker van het Mount-Palomar-observatorium.

type
scan

date
14.05.2021

filename
Foto_2021-05-18_221027.jpg

size
2,5MB

author
Arnout De Cleene

category
astronomy, mirror

14:17:54

This stack of seaweed was offered by Henning, a farmer of the wonderful island of Laeso. This matriarchal pirate island, north of Denmark, is known for its tradition of building roofs from the seaweed growing in the surrounding salty water. Back in time, women would harvest and slowly weave the material around wooden beams from shipwrecks. This time-consuming process and technique of building shelters from what comes from the sea engaged the population in working together, building a ritual around each construction. Then those wild, yet full-of-care roofs, conserved in salt, would last for hundreds of years.

When I arrived on his land, Henning told me about how he restores those old beauties, weaving fresh seaweed around old beams and pressing the collected old material into insulation panels for new buildings. We talked about the clay of his land and how seaweed can become a material for ceramics in the process of making glazes.

Notes

- Clementine Vaultier's interests, although trained as a ceramist, are in the warm surroundings of the fire rather than the production it engenders.



type	date	filename	size	author
photograph	06.09.2022	clementine_300_yo_seaweed.JPEG	1 MB	Clémentine Vaultier

category
architecture, encounter, house, repair

14:18:10

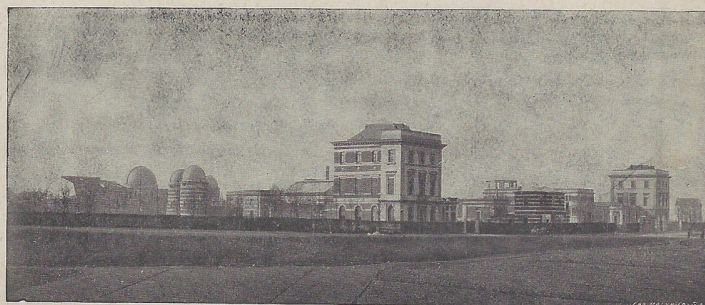
A visit to the Royal Observatory of Belgium, in Ukkel. Most of the domes are damaged and need repairing. Only a few telescopes are in use. It is difficult to find a good spot from which to film the site. When we asked the people at the Royal Meteorological Institute – the Observatory’s neighbouring institution – if we could access their building’s roof to film the observatory, the answer was ‘no’.

Notes

I (M.D.C.) remember there was a fire nearby. We couldn’t see the flames, but a tall dark plume of smoke rose above the trees lining the site. We didn’t insist any longer and ceased our attempt to access the roof, hoping we might find a good spot to film the smoke with a dome in the foreground.

Sources

Kesteloot, J. *Leerboek van Cosmografie voor Middelbaar en Lager Normaal Onderwijs* (derde vermeerderde uitgave). Brugge: Firma Karel Beyaert, 1948.



Cliché v. d. Koninklijke Sterrenwacht, Ukkel.

Fig. 1. — Algemeen zicht op de Koninklijke Sterrenwacht te Ukkel.

De telescopen zijn onder de goed merkbare koepels opgesteld.

III
1871
1872
1873
1874
1875
1876
1877
1878
1879
1880
1881
1882
1883
1884
1885
1886
1887
1888
1889
1890
1891
1892
1893
1894
1895
1896
1897
1898
1899
1900
1901
1902
1903
1904
1905
1906
1907
1908
1909
1910
1911
1912
1913
1914
1915
1916
1917
1918
1919
1920
1921
1922
1923
1924
1925
1926
1927
1928
1929
1930
1931
1932
1933
1934
1935
1936
1937
1938
1939
1940
1941
1942
1943
1944
1945
1946
1947
1948
1949
1950
1951
1952
1953
1954
1955
1956
1957
1958
1959
1960
1961
1962
1963
1964
1965
1966
1967
1968
1969
1970
1971
1972
1973
1974
1975
1976
1977
1978
1979
1980
1981
1982
1983
1984
1985
1986
1987
1988
1989
1990
1991
1992
1993
1994
1995
1996
1997
1998
1999
2000
2001
2002
2003
2004
2005
2006
2007
2008
2009
2010
2011
2012
2013
2014
2015
2016
2017
2018
2019
2020
2021

type
scan

date
15.05.2021

filename
Foto_2021-05-18_205934.jpg

size
2,1MB

author
De Cleene De Cleene

category
architecture, astronomy

14:18:12

The GPS-plotter displays the ship near Keyhaven Lake, indefinitely. The sea appears calm, the horizon is level from one perspective.



type
photograph

date
20.03.2022

filename
bridge_001.jpg

size
15,31 MB

author
Michiel De Cleene

category
map/plan, Reference Guide, replica/copy, sea, sticker, trompe l'oeil

14:18:15

On March 23th 2015, a high pressure system above Panama Bay blew strong winds landwards. At the Gatun locks, one of the webcams overlooking the Canal neglected the traffic and briefly captured its own images. The ship's presumed passage through the Gatun locks wasn't recorded by this camera and the AIS-transponder did not save any data of the ship's transit from the Pacific to the Atlantic side of the canal: the Authenticity managed to swap oceans undetected.

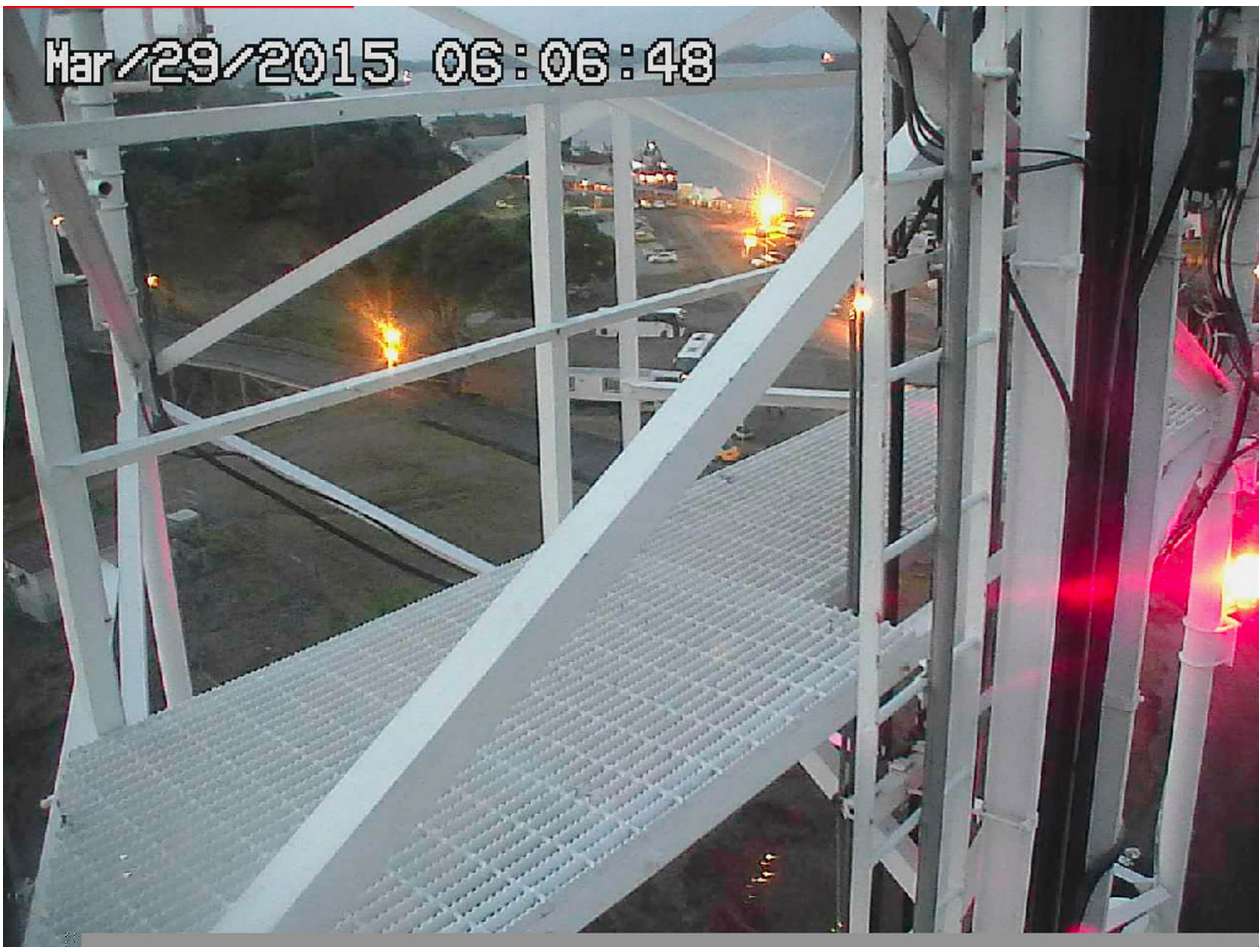
On February 16th 2016, the transponder still signals the ship near the port of Bahia Las Minas. The current is calm, the ship has been practically immobile for a year.

Notes

First published in: De Cleene, M. *Reference Guide*. Amsterdam: Roma Publications, 2019

Sources

Webcam Gatun Locks, Panama Canal, <http://www.pancanal.com>



type	date	filename	size	author
video	10.05.2021	gatun-cam3.mp4	53,16MB	Michiel De Cleene

category
animal, data storage, economy, encyclopaedia, interference, landscape, precipitation, Reference Guide, sea, technology

14:18:20

The architect's photographic archive contains seven images that can be labelled as panoramic pictures. However, they only appear as such when the photographs are viewed in the archive, as strips of negatives. In order to see the panoramic construct, the viewer needs to be presented with two consecutive negatives.

There are two kinds of panorama in the archive: the kind that can only be attributed to a kind of laziness or a need for efficiency on behalf of the architect, and another that originates from frugality.

The former type of panorama is created when the architect is documenting the situation as it is: it is compulsory to document the context of the building or lot, as part of a building application. He simply pivots from left to right, capturing the first and second photograph consecutively. On the filmstrip a panorama appears.

The other kind of panoramic picture only appears at the end of the film role. The last negative on the film has been exposed (the twenty-fourth or thirty-sixth), after which he exerts force onto the lever to move the film forward anyway. Some films are known to have, by accident, a twenty-fifth or a thirty-seventh negative. The plastic between the sprocket holes tears and the film does not advance enough. The result differs fundamentally from the other kind of panorama: there is no separation, no void between the negatives. Rather, there is a slight overlap. A thin, vertical strip of film that has been exposed twice, suggesting contiguity that might not be there. The two exposures might be from altogether different sites, creating a new situation.

Notes

- Based on De Cleene, M. & De Cleene, A. *The Situation as it Is. A Photonovel in Three Movements*. Gent: APE, 2022



type	date	filename	size	author
scan	27.04.2023	002_17.jpg	1,45 MB	De Cleene De Cleene

category
architecture, archive, house, mistake, precipitation, family, panorama

14:18:21

Until recently, for as long as I could remember, the packaging of Tabasco® Pepper Sauce had been unchanged. On the front of the packaging, there is a photograph of a bottle of Tabasco®, scale 1:1, against an orange background. As far as packaged goods go, this is a highly idiosyncratic and quirky example.

The background colour approximates the colour of the liquid inside the bottle, resulting in as good as no contrast. Moreover, as the image of the bottle is scale 1:1, the packaging becomes kind of unnecessary and superfluous, also because the life-sized image of the bottle is the only way information is given to the customer: there are no additional slogans, no repetition of the brand name, no props and no decor. The image of the bottle advertises the bottle. It seems to add nothing the bottle could not do by its own (like a bottle of wine does).

What makes the packaging truly stand out, however, is the fact that the image of the bottle is not positioned vertically, but is slightly askew. It seems to be the result of a design error, and has an amateur feel to it. The decision to keep it as such and not correct it up until today, is, however, a stroke of genius. The non-vertical positioning alters the relation of the image of the bottle to the bottle inside: as the box is standing on a shelf, the tilted image of the bottle undermines its representational superfluosity.



type
scan

date
29.03.2021

filename
Document_2021-03-29_111649.jpg

size
180KB

author
Arnout De Cleene

category
economy, food, mistake, packaging, replica/copy, scale

14:18:23

This stack of seaweed was offered by Henning, a farmer of the wonderful island of Laeso. This matriarchal pirate island, north of Denmark, is known for its tradition of building roofs from the seaweed growing in the surrounding salty water. Back in time, women would harvest and slowly weave the material around wooden beams from shipwrecks. This time-consuming process and technique of building shelters from what comes from the sea engaged the population in working together, building a ritual around each construction. Then those wild, yet full-of-care roofs, conserved in salt, would last for hundreds of years.

When I arrived on his land, Henning told me about how he restores those old beauties, weaving fresh seaweed around old beams and pressing the collected old material into insulation panels for new buildings. We talked about the clay of his land and how seaweed can become a material for ceramics in the process of making glazes.

Notes

- Clementine Vaultier's interests, although trained as a ceramist, are in the warm surroundings of the fire rather than the production it engenders.



type	date	filename	size	author
photograph	06.09.2022	clementine_300_yo_seaweed.JPEG	1 MB	Clémentine Vaultier

category
architecture, encounter, house, repair

14:18:26

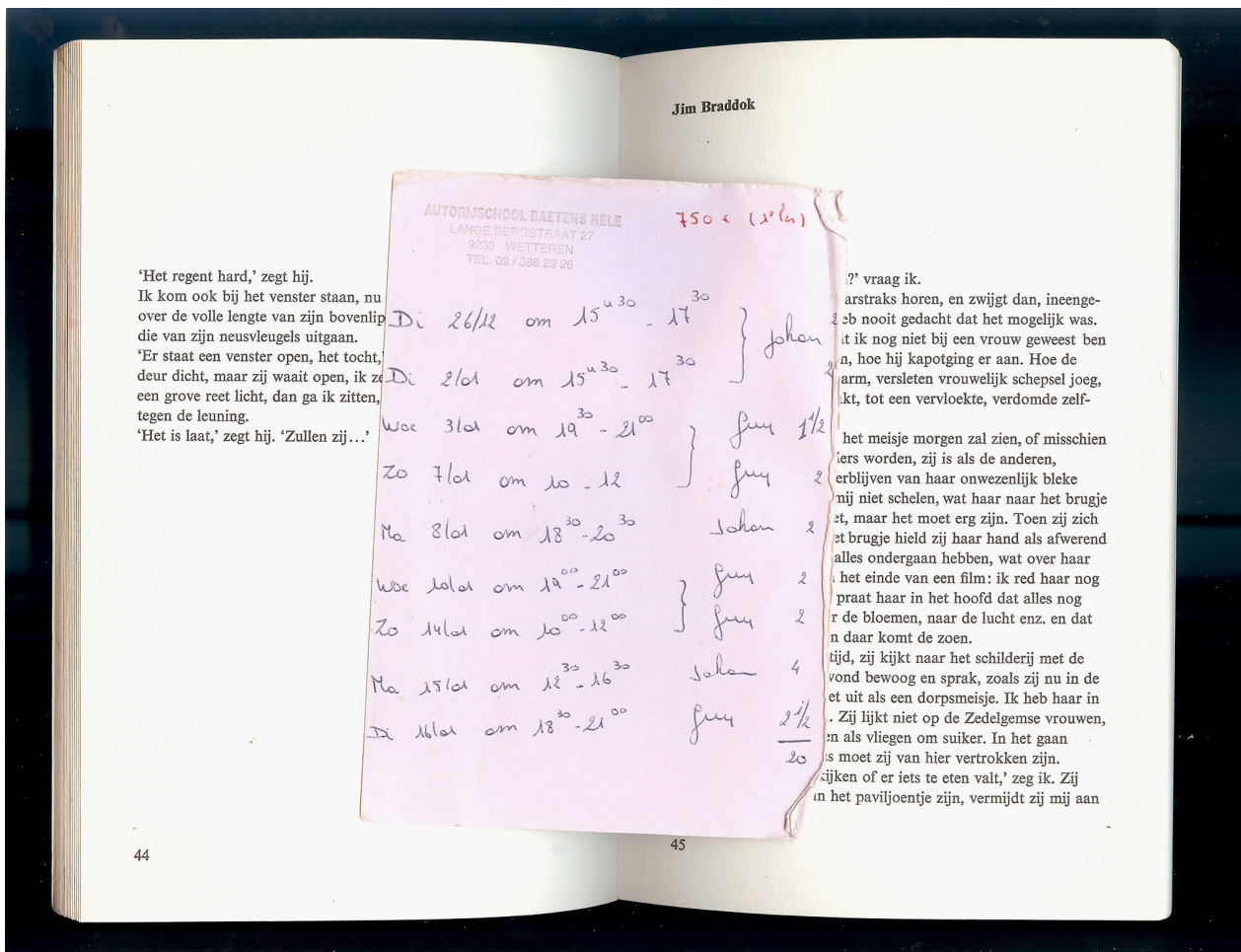
In his debut novel 'De Metsiers' Hugo Claus employs a multiple narrative perspective. In the copy I picked up in a thrift store, there's a bookmark between pages 44 and 45 where the perspective shifts from Ana to Jim Braddock. It's pouring. The pink piece of paper lists 9 sessions at a driving school. There's a total of 20 hours, taught alternately by Johan and Guy.

Notes

In 2000, 2006 and 2017 the twenty-sixth of December was a Tuesday. (Earlier years are improbable, since the Euro was not introduced yet.)

Sources

Claus, H. *De Metsiers*. Amsterdam: Uitgeverij De Bezige Bij, 1978.



type
scan

date
09.06.2021

filename
metsiers.jpg

size
11,61 MB

author
Michiel De Cleene

category
automobile, book, card, literature, precipitation

14:18:27

On the online thrift shop 2dehands.be the homepage generates a 'for you' section. On November 9th this section listed, among other things, a picture of the sky on a patch of concrete. On closer inspection, it became clear that it was the sky's reflection in a mirror with a red frame and four lightbulbs in it, the kind you might see at the hairdresser's or backstage in a television studio or theatre. The seller estimates the mirror's current value to be 45,00 EUR. The listing includes five photographs. In the fifth one, the object for sale reflects a bucolic landscape: a blue sky, white clouds, some trees and a fragment of a barn.



type	date	filename	size	author
screenshot	16.01.2022	Schermafbeelding 2021-11-09 om 20.54.40.png	2,92 MB	Michiel De Cleene

category
economy, landscape, mirror

14:18:28

