

org is an online platform, collecting, describing, presenting and generating documents of all sorts. It documents documents.

Your path through the collection lead along Tracking, CLOSED NO POWER. For prescriptions go to Walgreens 2690 Mission OPEN UNTIL 5 PM., 12:13, Flashlight in a dark corner of the Oval Room, The Saddle of a Sparta K-10, Rue Verte, Brussels, K10 in Folder Sparta Bikes 2011, Two Sparta K-10s, Owned by Fred and Partner, Pretending to be an artichoke, The Imaginary Edge of the Roadway, Weight Bench, The Birds, Tipp-Ex, F 6, Strings, Launching a Website, Mushroom Picking Prohibited, Mammoth Tree and the Golden Spurs, The Authenticity in the woods of the Bosque Protector de Arraiján

What constitutes a 'document' and how does it function?

According to the *Oxford English Dictionary*, the etymological origin is the Latin 'documentum', meaning 'lesson, proof, instance, specimen'. As a verb, it is 'to prove or support (something) by documentary evidence', and 'to provide with documents'. The online version of the *OED* includes a draft addition, whereby a document (as a noun) is 'a collection of data in digital form that is considered a single item and typically has a unique filename by which it can be stored, retrieved, or transmitted (as a file, a spreadsheet, or a graphic)'. The current use of the noun 'document' is defined as '*something* written, inscribed, etc., which furnishes evidence or information upon any subject, as a manuscript, title-deed, tomb-stone, coin, picture, etc.' (emphasis added).

Both 'something' and that first 'etc.' leave ample room for discussion. A document doubts whether it functions as something unique, or as something reproducible. A passport is a document, but a flyer equally so. Moreover, there is a circular reasoning: to document is 'to provide with documents'. Defining (the functioning of) a document most likely involves ideas of communication, information, evidence, inscriptions, and implies notions of objectivity and neutrality – but the document is neither reducible to one of them, nor is it equal to their sum. It is hard to pinpoint it, as it disperses into and is affected by other fields: it is intrinsically tied to the history of media and to important currents in literature, photography and art; it is linked to epistemic and power structures. However ubiquitous it is, as an often tangible thing in our environment, and as a concept, a document *deranges*.

the-documents.org continuously gathers documents and provides them with a short textual description, explanation, or digression, written by multiple authors. In *Paper Knowledge*, Lisa Gitelman paraphrases ‘documentalist’ Suzanne Briet, stating that ‘an antelope running wild would not be a document, but an antelope taken into a zoo would be one, presumably because it would then be framed – or reframed – as an example, specimen, or instance’. The gathered files are all documents – if they weren’t before publication, they now are. That is what the-documents.org, irreversibly, *does*. It is a zoo turning an antelope into an ‘antelope’.

As you made your way through the collection, the-documents.org tracked the entries you viewed. It documented your path through the website. As such, the time spent on the-documents.org turned into this – a new document.

This document was compiled by _____ on 20.04.2023 15:36, printed on _____ and contains 17 documents on 37 pages. (<https://the-documents.org/log/20-04-2023-5310/>)

the-documents.org is a project created and edited by De Cleene De Cleene; design & development by atelier Haegeman Temmerman.

the-documents.org has been online since 23.05.2021.

Notes

- De Cleene De Cleene is Michiel De Cleene and Arnout De Cleene. Together they form a research group that focusses on novel ways of approaching the everyday, by artistic means and from a cultural and critical perspective.
www.decleenedecline.be / info@decleenedecline.be
- This project was made possible with the support of the Flemish Government and KASK & Conservatorium, the school of arts of HOGENT and Howest. It is part of the research project *Documenting Objects*, financed by the HOGENT Arts Research Fund.

Sources

- Briet, S. *Qu'est-ce que la documentation?* Paris: Edit, 1951.
- Gitelman, L. *Paper Knowledge. Toward a Media History of Documents*. Durham/ London: Duke University Press, 2014.
- *Oxford English Dictionary Online*. Accessed on 13.05.2021.



Flanders
State of the Art



I drove through the neighborhood seeking evidence of the disruption using a power outage map as a compass. Winding through quiet streets, I stumbled upon a lone blue PG&E truck idling opposite a charred utility pole with fragments of wood and wire strewn across the pavement. I parked my car and walked toward the truck to ask the driver what had happened. He pointed to the top of the pole where a porcelain insulator dangled precariously from a high-voltage line. “Tracking,” he said curtly. “Is that like a short circuit?” I asked. “Kind of,” he replied before pausing. He finally elaborated, explaining that the problem arises when moisture from morning fog settles on power lines, creating a pathway for electricity to arc across components.

He then input something into a handheld device before driving away, leaving the repair for another service team to complete. I gathered the debris intending to collect the remaining components that comprise a utility pole, each having failed in one form or another. I shipped the fragments to Maziar the following week.

Notes

- Mathew Kneebone is an artist based in San Francisco. His interdisciplinary practices takes different forms, all in relation to an interest in electricity and technology. He teaches studio and thesis writing at California College of the Arts.



type	date	filename	size	author
photograph	24.02.2023	02_tracking.jpg, 03_tracking.jpg	3,51 MB, 324 KB	Mathew Kneebone

category
automobile, collecting, encounter, hand, impact, map/plan, precipitation, repair, technology

15:35:52



[13:42] Maziar: Power out at Rib now.

[13:45] Mathew: It's windy here today, sorry!

[13:45] Maziar: Saying from the comfort of his electrified home, or...you also have no power?

[13:45] Mathew: No, I don't. But, typically, outages in the city are shorter than in regional areas. PG&E website estimates service within two hours...Maybe you could post a business sign on Rib's window?¹

[13:52] Maziar: Yes. Though my phone is almost dead. No light. Can you send me a text for the sign? I can't access the drive.

[13:52] Mathew: Yeah.

[13:52] Maziar: I feel reality hitting. Not so much the reality of blackouts in the U.S., but the reality of life and work...and that it is time to go home.

[13:55] Mathew: "CLOSED NO POWER For prescriptions go to Walgreens 2690 Mission OPEN UNTIL 5 PM."

[13:55] Maziar: Thanks.

[13:56] Mathew: Yeah, maybe it's time for you to leave for the night. I'm going to drive around to see what's happening.

[13:59] Maziar: Okay, enjoy.

Notes

- 1 Local businesses experiencing a blackout typically post handwritten notices on their street-facing windows. These condensed notes detail acute symptoms felt at a community level, hinting at the improvisation required to maintain social harmony.
- Mathew Kneebone is an artist based in San Francisco. His interdisciplinary practices takes different forms, all in relation to an interest in electricity and technology. He teaches studio and thesis writing at California College of the Arts.

CLOSED NO POWER. For prescriptions go to Walgreens
2690 Mission OPEN UNTIL 5 PM.



type
photograph

date
21.02.2023

filename
closed-no-power.jpg

size
641 KB

author
Mathew Kneebone

category
automobile, impact, repair, sign, wind

15:36:03

During a two hour tour, H.V. (head of the science collection) guided us from the library to the observatory and back. Along the way, he touched upon various rarities: one hundred ninety-five volumes of the *Encyclopédie Méthodique* (according to H.V. the most complete copy left in the world), the severed summit of Mont Blanc (‘Actually de Saussure brought back a triangular piece of rock from just below the snow line near the summit’), an original copy of the publication on the infamous Lügensteine (‘These date back to the time before the hoax was unveiled’)...

In guiding us from room to room, H.V. piled oddity upon curiosity. He showed a particular interest in all things fish-related.

Notes

- First published in: De Cleene, M. *Reference Guide*. Amsterdam: Roma Publications, 2019



type	date	filename	size	author
photograph	30.01.2023	teylers.tif	36,68 MB	Michiel De Cleene

```
category
animal, archaeology, architecture, archive, astronomy, book, encounter, hand, Reference Guide, replica/copy
```

15:36:04

How slanted is this saddle? Anyone looking at the full photo of this Sparta K-10 might think that the street fence is pushing its saddle down at an angle. However, the bike and its saddle are leaning against the fence, they are not pushed under it. Whether the saddle is as slanted as the photo suggests, we are not sure. This detail of the photo suggests otherwise. The rail to which the saddle is attached is already mounted slightly less slanted than the line of the fence behind which the saddle is partly hidden, and above that part of the fence something vaguely protrudes from the back of the saddle. Presumably that is the edge of the saddle, which would reassure us about the cyclist's comfort.

Notes

- Lars Kwakkenbos lives and works in Brussels and Ghent (B). He teaches at KASK & Conservatorium in Ghent, where he is currently working on the research project 'On Instructing Photography' (2023-2024), together with Michiel and Arnout De Cleene.



type
photograph

date
22.01.2023

filename
Naamloos.jpg

size
189 KB

author
Lars Kwakkenbos

category
bicycle

15:36:04

The company Demuynck from Heist (B) has put the 2011 brochure of Dutch bicycle manufacturer Sparta on yumpu.com as an ePaper. According to yumpu.com, this was reportedly done on 28 September 2013. The leaflet is titled 'Collection Overview 2011'. On pages 68 and 69, the bike is called K10, the frame says K-TEN, while a version presumably a bit older is usually for sale second-hand as K-10. The K10 is a 'practical, compact city bike', it is available in one unisex frame size 50 and it has an integrated cable lock. There is a loop at the back of the large tube to which the rest of the frame is mounted. This might be the end of that lock. There are optional carriers, front and rear, and there is an optional lighting kit. The recommended retail price is 299 euros.

Notes

- Lars Kwakkenbos lives and works in Brussels and Ghent (B). He teaches at KASK & Conservatorium in Ghent, where he is currently working on the research project 'On Instructing Photography' (2023-2024), together with Michiel and Arnout De Cleene.



type	date	filename	size	author
screenshot	20.01.2023	Screenshot 2022-09-30 at 10-59-06 Klik hier voor de folder Sparta fietsen 2011. - Demuyne Heist.png	761 KB	Lars Kwakkenbos

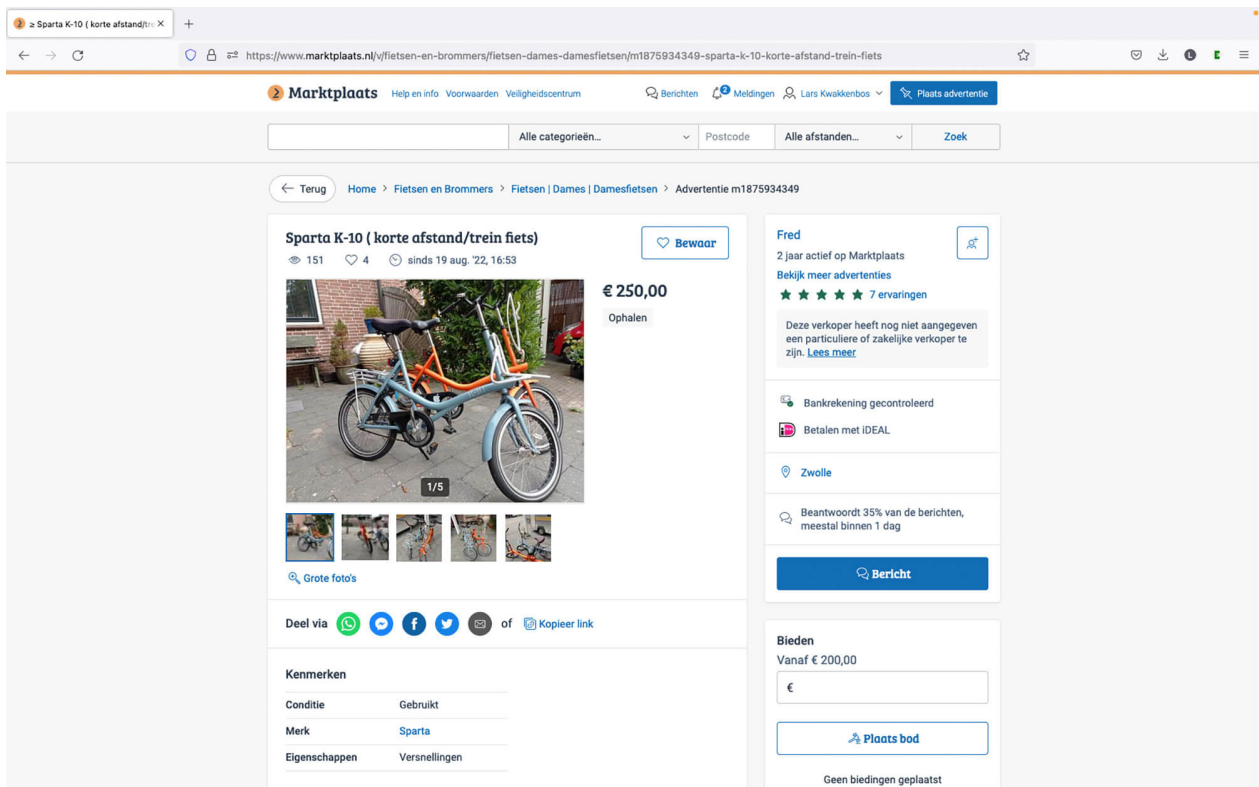
category
bicycle, economy

Fred from Zwolle offers two Sparta K-10s on Marktplaats.nl on 29 September 2022. The asking price for the two bikes is 250 euros, bids may start from 200 euros. The green bike has a front light that is powered by a rim dynamo, while in another photo we see a front light on the orange bike that is presumably battery-powered, as may be the case for the rear lights. The carrier mounted at the front of the green bike is clearly a luggage carrier, as is the one at the back. What the carrier mounted at the front of the orange bike is for, is unclear. The description of the bikes does mention the function of the loop protruding from the frame at the back of the Sparta K-10:

‘20-inch bikes that we have always used while camping. No gears but smooth and light pedalling. Ideal for running small errands close by or a quick errand in the toilet building. They are light and quite short making them easy to take on the train. Ideal as a short-distance bike between station and work. Both are, furthermore, in good condition. Each bike comes with a key for the integrated cable lock. Are listed as a ladies’ bike but I (male) get on just fine.’¹

Notes

- 1 ‘20 inch fietsen die wij altijd tijdens het kamperen hebben gebruikt. Geen versnellingen maar soepel en licht trappend. Ideaal om kleine boodschappen dichtbij te doen of een snelle boodschap in het toilet gebouw. Ze zijn licht en vrij kort waardoor ze makkelijk mee te nemen zijn in de trein. Ideaal als korte afstandfiets tussen station en werk. Beiden zijn verder in goede staat. Van elke fiets beide sleutels aanwezig voorzien van een geïntegreerd kabelslot. Worden als damesfiets genoemd maar ik (man) kom er prima mee vooruit.’
- Lars Kwakkenbos lives and works in Brussels and Ghent (B). He teaches at KASK & Conservatorium in Ghent, where he is currently working on the research project ‘On Instructing Photography’ (2023-2024), together with Michiel and Arnout De Cleene.



filename

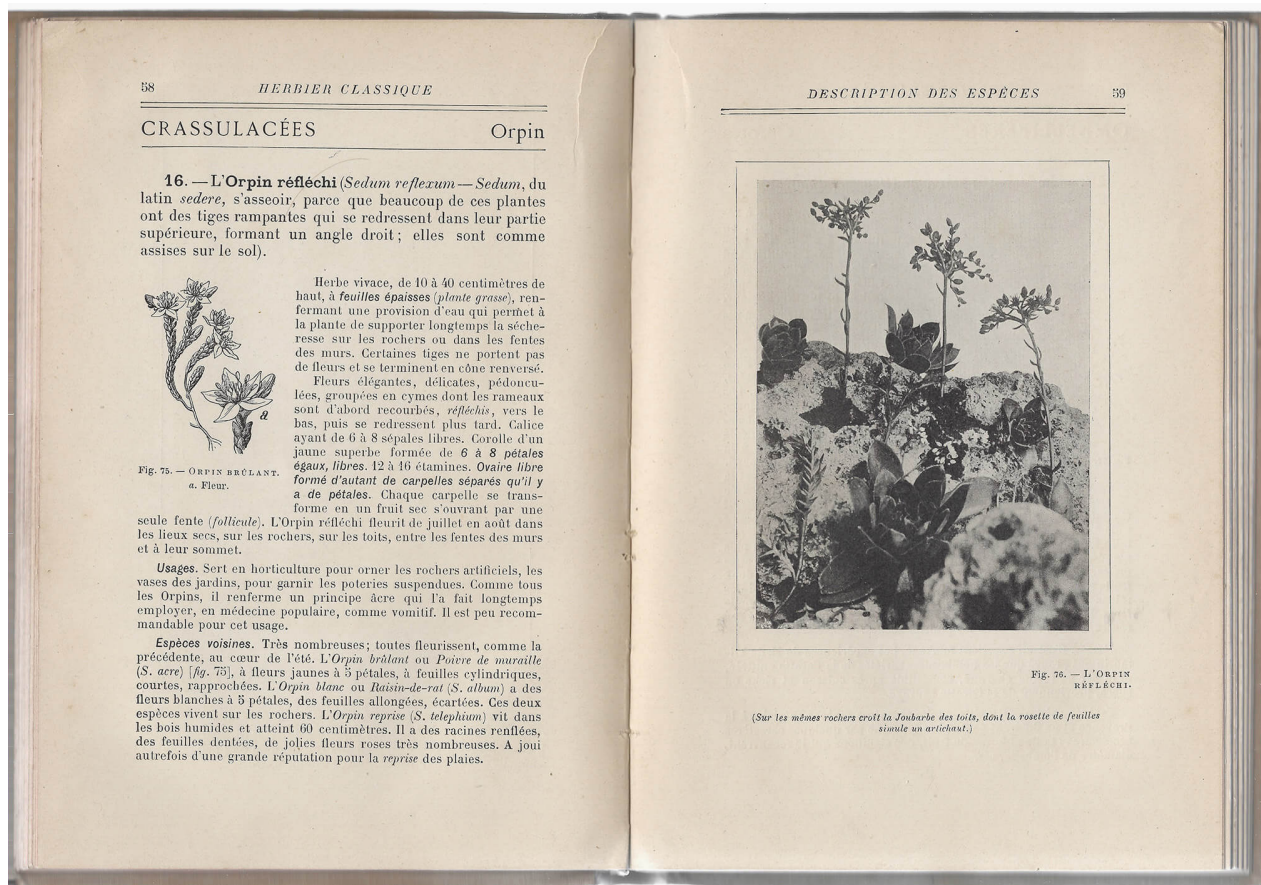
Screenshot 2022-09-29 at 12-19-38

Sparta K-10 (korte
afstand_trein fiets) – Fietsentype
screenshotdate
18.01.2023Dames Damesfietsen –
Marktplaats.pngsize
522 KBauthor
Lars Kwakkenboscategory
bicycle, economy

15:36:05

The *Sedum reflexum* grows on rocky soils and in crevices of walls. In *L'herbier classique*, it is depicted in two ways, just like the other plants in the book. This double portraiture is important, the author states in the introduction: 'one consists of the reproductions of the photographs taken by the author of this book [...]; the other, drawings made by excellent artists who observed the plants themselves, showing details photography can't reproduce, highlighting aspects the photographs leave untouched. [...] From this double representation, interesting comparisons can be made, highly enlightening from an artistic point of view, between the realistic aspect of nature's "productions" and the interpretation thereof by the draftsman' (5).

A detail not covered by the drawing of the *sedum reflexum*, is the presence of other species in the vicinity of the plant, a detail shown in the photograph and described in the caption: 'The Common houseleek grows on the same rocks, with its rosette of leaves pretending to be an artichoke' (59).



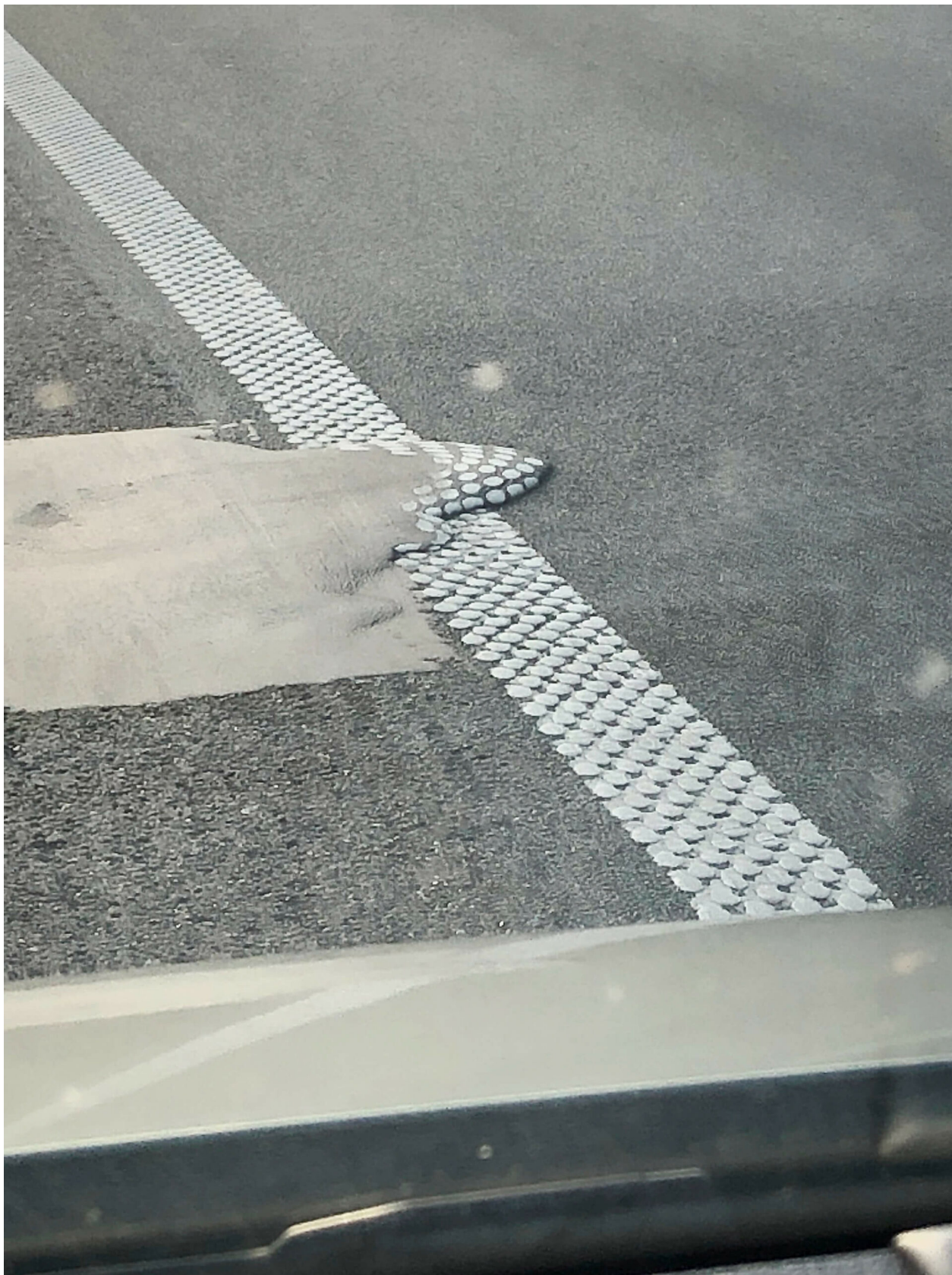
Article 75 of the Royal Decree containing general regulations for road traffic and the use of public roads, published in *Het Belgisch Staatsblad* on 9 December 1975, lists the rules for longitudinal markings indicating the edge of the roadway.

According to 75.1, there are two types of markings that indicate the actual edge of the roadway: a white, continuous stripe and a yellow interrupted line. The former is mainly used to make the edge of the roadway more visible; the latter indicates that parking along it is prohibited.

In 75.2, the decree focuses on markings that indicate the imaginary edge of the roadway. Only a broad, white, continuous stripe is permitted for this purpose. The part of the public road on the other side of this line is reserved for standing still and parking, except on motorways and expressways.

Sources

<https://wegcode.be/wetteksten/secties/kb/wegcode/262-art75>



type
photograph

date
08.08.2021

filename
IMG_7943.HEIC

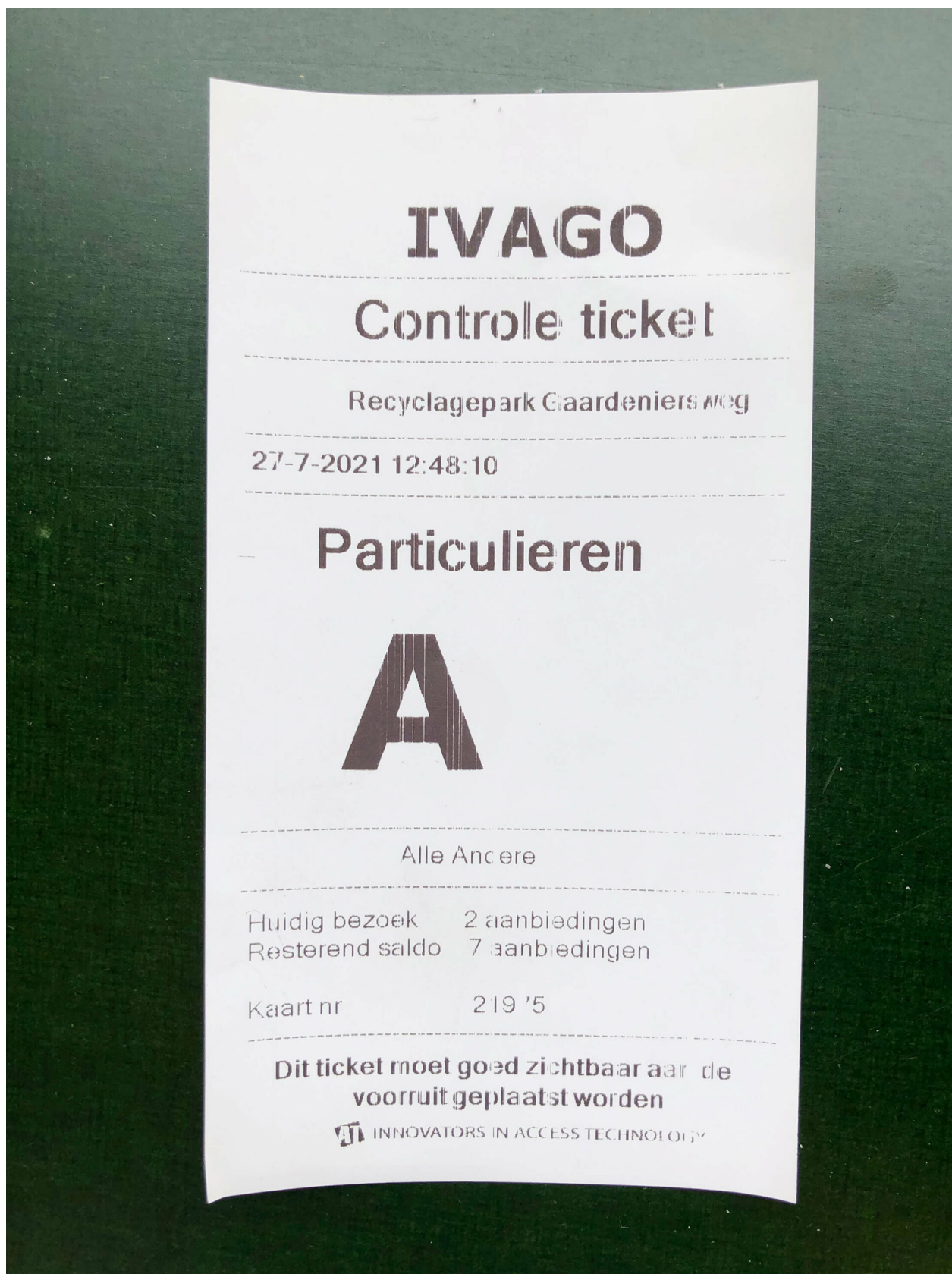
size
659 KB

author
Michiel De Cleene

category
automobile, government, parking, repair, sign

15:36:11

Today I brought an old bedspring, the styrofoam the air-humidifier came in, a few bags of sawdust and some scrap pieces of plywood to the municipal recycling center. As I was waiting to mount the stairs to the scrap metal container, a gray-haired man wearing blue leather shoes, dark jeans and a checkered shirt was tipping – with relative ease – a weight bench over the edge of the container.



type
photograph

date
26.07.2021

filename
IMG_7874.HEIC

size
1,2MB

author
Michiel De Cleene

category
crash, impact, waste

15:36:11

This is the spread one sees upon opening the bird field guide that once stood, as the stamp indicates, in the library of a psychiatric institution.¹ It shows birds' silhouettes, as they can be seen beside the road.

The drawing has a kind of Hitchcock feel to it.² The birds seem to be spying on each other, as they also seem to be spying on the unsuspecting passer-by.

The composition of the scene is marvelous. The electric wires, the tree, the wire fence, the double framed list with the birds' names, handsomely positioned in a birdless patch, at once superimposed on the telephone wires, and pushed to the background by the skylark.

Imagine seeing this scene. What are the odds: to see the silhouettes of Europe's twenty most common species of birds in one glance, from your car's window, as you are driving home at dusk.

Before closing the book, the last spread seems to show the birds fleeing, maybe attacking.³

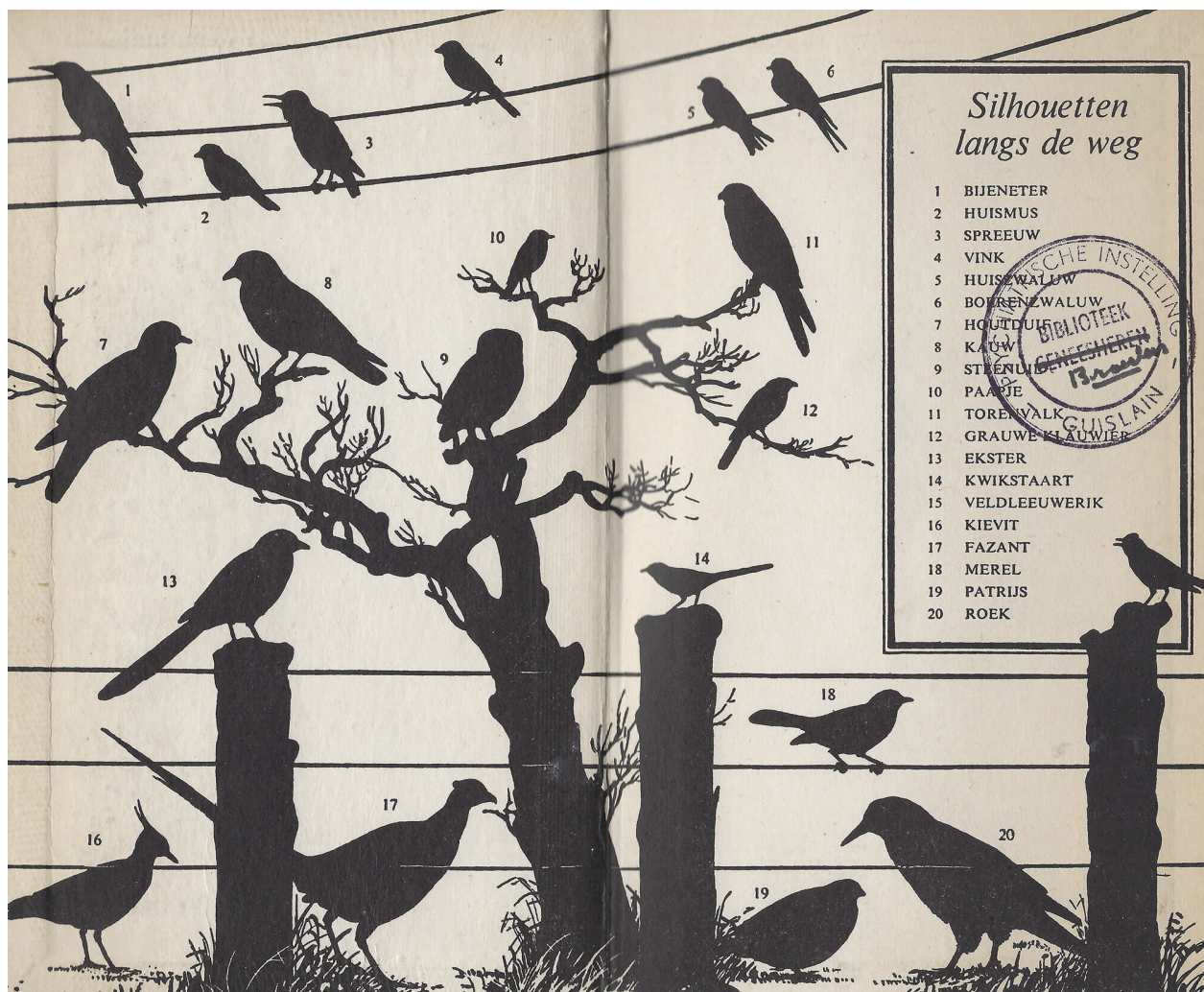
Notes

- 1 The stamp indicates that, at the psychiatric institution, the book was part of the sublibrary for the Catholic Brothers of Charity. The crossed-out part indicates that there was also a separate physicians' library, to which the book might have originally belonged.
- 2 On the web, discussions on whether Alfred Hitchcock's *The Birds* (1963) was shot in colour or in black and white, abound.
- 3



Sources

Peterson, R.T., Mountfort, G. & P.A.D. Hollom. *Vogelgids voor alle in ons land en overig Europa voorkomende vogelsoorten* (J. Kist, transl.). 3d ed. Amsterdam/Brussels: Elsevier, 1955.



type
scan

date
19.07.2021

filename
Document_2021-07-19_094741.jpg

size
7,5MB

author
Arnout De Cleene

category
animal, automobile, book, dusk, encyclopaedia, landscape, tree

15:36:12

A white Mercedes van inserts in front of me in a traffic jam near Antwerp. The back of the van has been altered in several ways: a latch was added to the door,¹ a footstep was bolted to the bumper, a couple of tie-wraps are holding up the lights on the left side.² Traffic is moving slow. There is no Mercedes logo.³ Some parts have been retouched with white paint that differs slightly from the rest of the bodywork,⁴ not unlike a tipp-ex'ed document.

Notes

- 1 Maybe the original locking mechanism no longer functions, or, perhaps, the owner wants to add a padlock to the doors at night.
- 2 Maybe a corroded screw caused the lights to come loose, or a slight collision.
- 3 Someone might have stolen it. Mercedes stars are often stolen, although mostly from the hood.
- 4 Maybe to counter corrosion, to conceal a mark someone made on the van or to cover up a fixed dent.
- Legislation concerning the publication of someone else's licence plate on the internet and the demand to blur it, is somewhat ambiguous.



type
photograph

date
05.07.2021

filename
IMG_7538.HEIC

size
714 KB

author
Michiel De Cleene

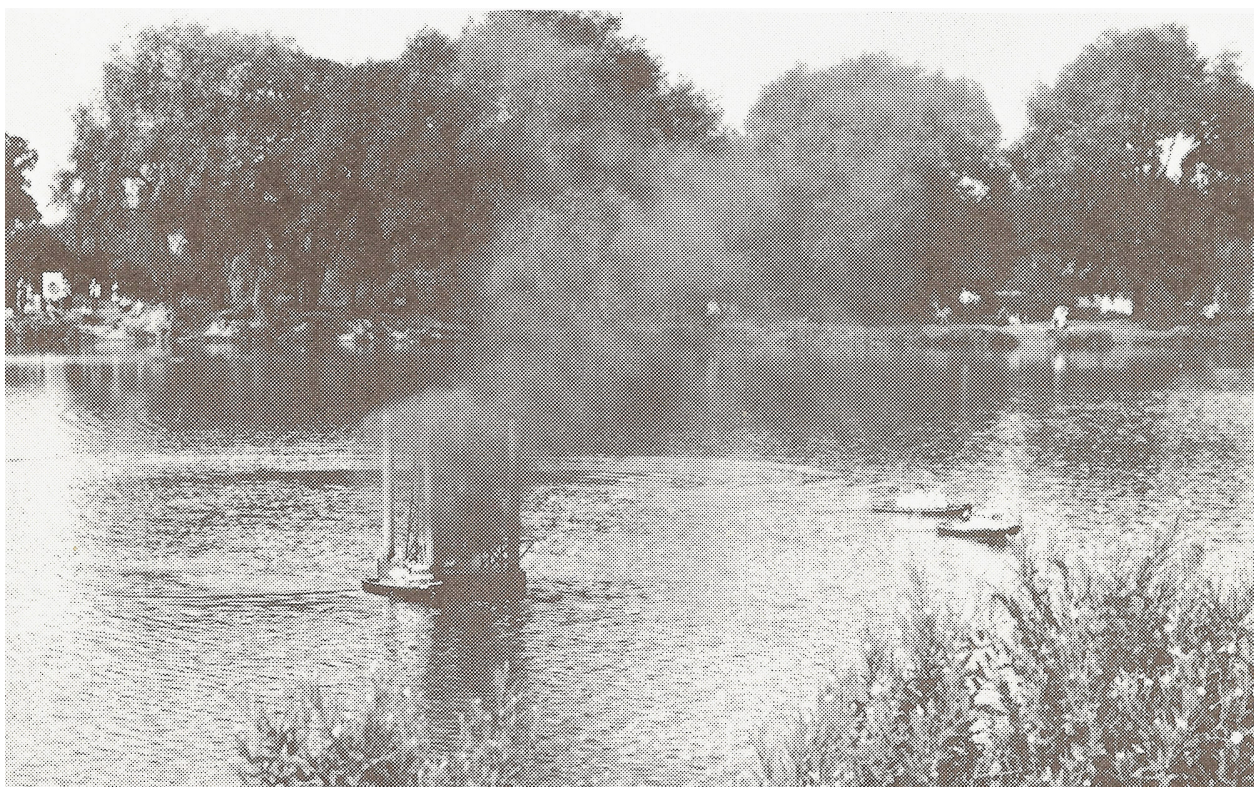
category
automobile, crash, impact, insurance, sticker

15:36:13

In his *Handboek Varende Scheepsmodellen* (Handbook Sailing Ship Models) André Veenstra explains the different classes in ship model-competitions. There's a wide variety. For static ship models the most important one is 'truth-to-nature'. A jury compares the model to photographs of the actual ship and brings into account categories such as amount of work, degree of difficulty, scale ratio, construction execution and painting.

The most interesting class – according to Veenstra – is F 6. In this particular class, a number of participants with different boats will form a team. Together, they will perform a certain 'act' with a maximum duration of ten minutes. During the act, they mimic a slice of reality. Such as, for example, 'rescuing' and towing a ship in distress; extinguishing a fire on a tanker or oil rig, lichen and/or tow the sunken wreckage to the harbor, stage a naval battle, etc.

Page 262 shows a photograph of such a mimicked slice of reality. The caption explains: 'Image 14.15. The Dutch demonstration in the F 6 class during the European Championship of 1975: the oil rig is set on fire by a motorboat with terrorists. The fire is extinguished and the oil rig is quickly towed to a safe harbor by tugs. The show was performed by six people and took a very creditable fourth place.'



type
scan

date
22.06.2021

filename
veenstra-b.jpg

size
20,17 MB

author
Michiel De Cleene

category
book, landscape, replica/copy, scale, sea

15:36:13

The weeds and bushes on what over the years has become savanna are being chopped to clear the ground to replant trees and reinstate the forest. During the dry season, forest fires are frequent. In between the future lots of planted trees, firebreaks are made to keep fires from spreading. Wires are used to measure the required distance between plant beds and to keep a straight line. The sun is sinking. In a bit, the workers will return home and the field will empty out. In a couple of years, the Acacias, Ebben trees, *Millettia laurentii* and Umbrella trees will testify to the strings.



type
video

date
10.06.2021

filename
MVI_2082.MOV

size
285MB

author
Arnout De Cleene

category
RDC, botany, tree, landscape

15:36:14

As the hours passed, and while clouds continuously kept us from seeing stars and planets, we started to photograph the set-up used to launch this website. To highlight the umbrella that protected the gear from the unpredictable bursts of rain, we used a flashlight: during the thirty second long exposure, it was lit for two seconds. This proved to be enough to give the whole the feel of an untampered, realistic view. Meanwhile, the website was in all likelihood streaming a grey haze, as the telescope was pointed to the fleeting clouds and gradually spinning along with the earth's movement to keep track of the same invisible celestial bodies. As we returned to the base, planet Jupiter had become visible to the naked eye.



In another exposure of the same length, we left the flashlight on for approximately eight seconds and pointed the beam a bit lower.



type	date	filename	size	author
photograph	26.05.2021	_44A0953.DNG	44,52MB	De Cleene De Cleene
category	astronomy, mirror, technology, precipitation			

15:36:14

I must have driven past this rocky landscape about sixteen times, going back and forth between viewpoints and the house the parents of a friend let me stay in. On the last day, I left early for the airport, pulled into a lay-by, took my tripod and camera out of the trunk of the red Volkswagen Polo rental car and made two photographs.¹ It was only when I got home, had the film developed, scanned it and was removing dust particles from the file, that I discovered the hand painted text on the rock: ‘PROIBIDO BUSCAR SETAS’.

Notes

1.





type	date	filename	size	author
photograph	19.05.2021	Untitled99993-dustfree-nosharpen-crop2.psd	365,37MB	Michiel De Cleene

category
automobile, dusk, food, landscape, parking, sign, tree

15:36:15

Between the rhinos and the kangaroos in the Antwerp Zoo a wooden footpath curves through a grove of *Sequoiadendron Giganteum* trees. In the middle of this Californian forest, visitors find the giant slice of a felled tree of the same species. It was brought to the zoo in 1962 and was approximately 650 years old at the time. Eleven labels point out significant moments in history on the tree's growth rings. They range from zoo- and zoology-related moments (for instance: '1901: The Okapi is described as a species', or '1843: Foundation of the RZSA and opening of the Zoo', or '1859: Darwin publishes *The Origin of Species*', etc.), to cultural and historical milestones ('1555: Plantijn starts publishing books in Antwerp', or '1640: Rubens (baroque painter) dies', or '1492: Columbus in America'). Another label points to the last growth ring and reads: '1962: this tree is felled and this tree disc is installed at the Zoo.'

The label pointing to the centre of the tree implies a simultaneity between the tree's first growth year and the Battle of the Golden Spurs in 1302.

Notes

On closer inspection the slice seems to consist of two halves that were put together like a jigsaw puzzle. The resulting gap is skilfully patched with what appears to be wood from the same species – possibly even the same mammoth tree.



type
photograph

date
15.05.2021

filename
IMG_6958.HEIC

size
1,9MB

author
Michiel De Cleene

category
animal, book, botany, card, tree

15:36:16

The Authenticity bunkered crude fuel in the Panama Bay. She navigated back and forth between the artificial island Isla Melones and ships leaving or waiting to enter the Panama Canal. On February 14th 2015 she had been moored for a couple of days near the Centennial bridge when the AIS-transponder momentarily signalled the ship's position in the woods of the Bosque Protector de Arraiján. Afterwards no signal of the ship was received for 41 days, until she reappeared near the port of Bahia Las Minas, at the other side of the Panama Canal.

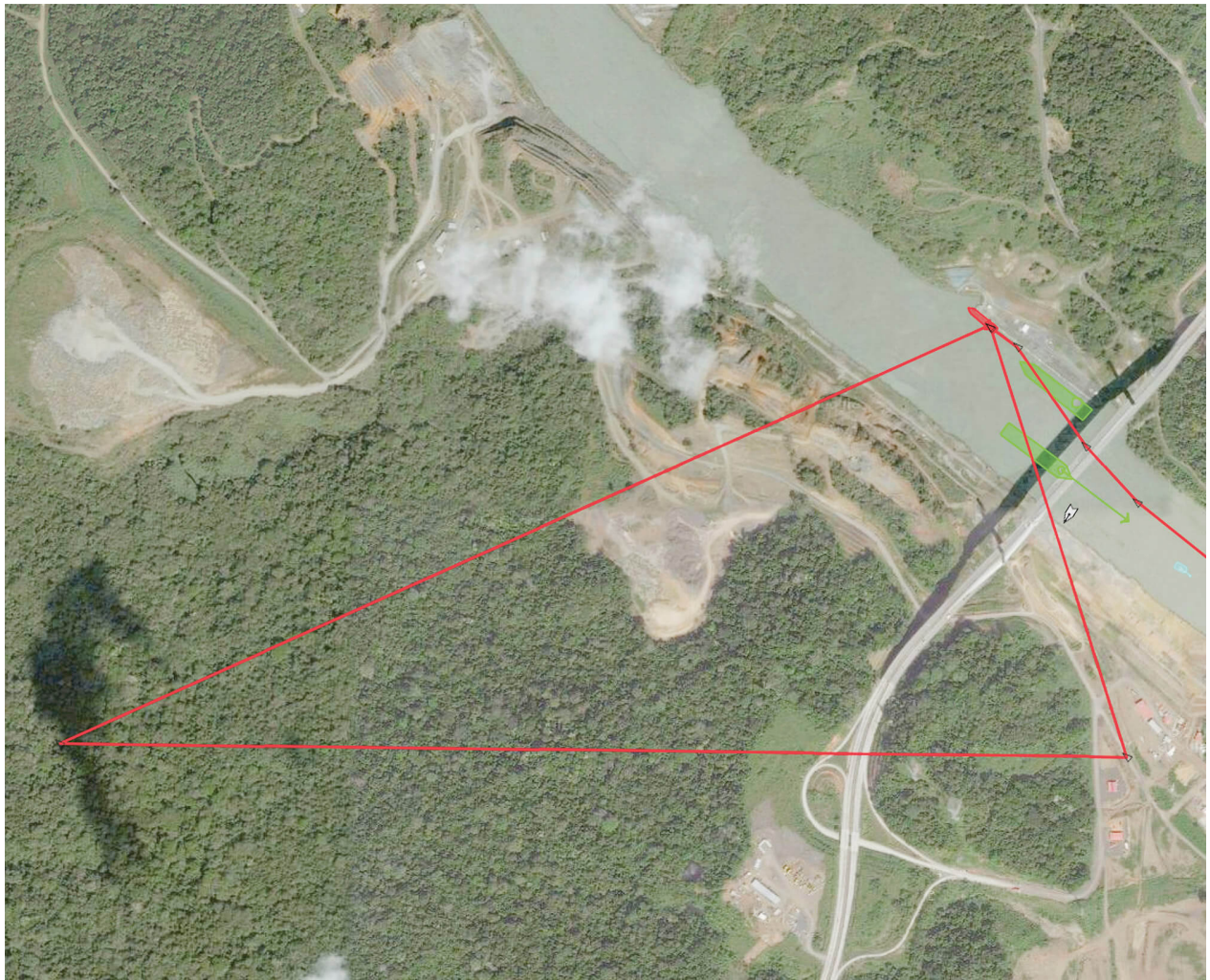
Notes

First published in: De Cleene, M. *Reference Guide*. Amsterdam: Roma Publications, 2019

Sources

Marine Traffic, Authenticity (Caribe Trader, PA), latest position, 09°01'40,71" N 79°38'18,59"W, viewed 14.02.2015, <http://www.marinetraffic.com>

The Authenticity in the woods of the Bosque Protector de Arraiján



type	date	filename	size	author
screenshot	10.05.2021	caribe.jpg	17,33MB	Michiel De Cleene

category
economy, encyclopaedia, interference, landscape, map/plan, Reference Guide, sea, technology, tree, data storage

15:36:16

