

org is an online platform, collecting, describing, presenting and generating documents of all sorts. It documents documents.

Your path through the collection lead along A DONNER, Shoulder, Magnifier, This Year's Model, Album, Essie, The Face of a Chair, Room 3, LIGO, Crash (1), Negative sheet 21, negative 24, negative 24,5, Knee, License Plate, Negative sheet 13, negative 24, negative 24,5, Negative sheet 55, negative 4, negative 5, Negative sheet 02, negative 5, negative 6, Tracking, pgealerts.alerts.pge.com/, Traces of logging on Mount Egaleo, The Loop of the Sparta K-10, The Saddle of a Sparta K-10, Rue Verte, Brussels, Green or blue, Two Sparta K-10s, Owned by Fred and Partner

What constitutes a 'document' and how does it function?

According to the *Oxford English Dictionary*, the etymological origin is the Latin 'documentum', meaning 'lesson, proof, instance, specimen'. As a verb, it is 'to prove or support (something) by documentary evidence', and 'to provide with documents'. The online version of the *OED* includes a draft addition, whereby a document (as a noun) is 'a collection of data in digital form that is considered a single item and typically has a unique filename by which it can be stored, retrieved, or transmitted (as a file, a spreadsheet, or a graphic)'. The current use of the noun 'document' is defined as '*something* written, inscribed, etc., which furnishes evidence or information upon any subject, as a manuscript, title-deed, tomb-stone, coin, picture, etc.' (emphasis added).

Both 'something' and that first 'etc.' leave ample room for discussion. A document doubts whether it functions as something unique, or as something reproducible. A passport is a document, but a flyer equally so. Moreover, there is a circular reasoning: to document is 'to provide with documents'. Defining (the functioning of) a document most likely involves ideas of communication, information, evidence, inscriptions, and implies notions of objectivity and neutrality – but the document is neither reducible to one of them, nor is it equal to their sum. It is hard to pinpoint it, as it disperses into and is affected by other fields: it is intrinsically tied to the history of media and to important currents in literature, photography and art; it is linked to epistemic and power structures. However ubiquitous it is, as an often tangible thing in our environment, and as a concept, a document *deranges*.

the-documents.org continuously gathers documents and provides them with a short textual description, explanation, or digression, written by multiple authors. In *Paper Knowledge*, Lisa Gitelman paraphrases ‘documentalist’ Suzanne Briet, stating that ‘an antelope running wild would not be a document, but an antelope taken into a zoo would be one, presumably because it would then be framed – or reframed – as an example, specimen, or instance’.

The gathered files are all documents – if they weren’t before publication, they now are. That is what the-documents.org, irreversibly, *does*. It is a zoo turning an antelope into an ‘antelope’.

As you made your way through the collection, the-documents.org tracked the entries you viewed.

It documented your path through the website.

As such, the time spent on the-documents.org turned into this – a new document.

This document was compiled by _____ on 16.04.2024 00:41, printed on _____ and contains 23 documents on 51 pages. (<https://the-documents.org/log/15-04-2024-5926/>)

the-documents.org is a project created and edited by De Cleene De Cleene; design & development by atelier Haegeman Temmerman.

the-documents.org has been online since 23.05.2021.

Notes

- De Cleene De Cleene is Michiel De Cleene and Arnout De Cleene. Together they form a research group that focusses on novel ways of approaching the everyday, by artistic means and from a cultural and critical perspective.
www.decleenedecline.be / info@decleenedecline.be
- This project was made possible with the support of the Flemish Government and KASK & Conservatorium, the school of arts of HOGENT and Howest. It is part of the research project *Documenting Objects*, financed by the HOGENT Arts Research Fund.

Sources

- Briet, S. *Qu'est-ce que la documentation?* Paris: Edit, 1951.
- Gitelman, L. *Paper Knowledge. Toward a Media History of Documents.* Durham/ London: Duke University Press, 2014.
- *Oxford English Dictionary Online.* Accessed on 13.05.2021.



Flanders
State of the Art



A snow-covered stainless steel and glass shelf has a note, written in red marker, cello-taped to one of the steel supports: 'A DONNER'.

Now a park, the Place Marie Janson – colloquially called *Carré Moscou* or *Carré Monnaies* – used to house *L'Hôtel des Monnaies/het Munthof*. For a century, the coins of some twenty-two countries were minted in this building.

Sources

- [hotel_monnaies_nl.pdf](#)



type
photograph

date
03.04.2024

filename
_44A8275.dng

size
52,46 MB

author
Michiel De Cleene

category
card, decoration, dusk, precipitation, sign, waste

23:40:28

Yesterday I had my shoulder checked by a radiologist. He took an ultrasound and saw some minor inflammation of my right subscapularis.

After giving me some advice – ‘we could give you a shot of cortisone in the shoulder. It would relieve you from your pain for six weeks and then, without proper exercise, you’d be back where you are now’ – he walked towards the door. ‘I propose you do this exercise thirty times, three times a day.’

The radiologists put his right hand on the doorframe, his arm stretched, the weight of his body on it and then leaned forward and back again, while keeping his arm stretched. ‘This will increase the muscles around the sore subscapularis. It will take months.’ After giving me his advice, he sent me back into the dressing room. I put my shirt back on and went into the waiting room. The nurse called out my name, charged me 14,00 EUR and gave me a card. ‘This code will allow you to look at the images of the ultrasound at home’, she said.

Today I entered the code and password and – instead of my shoulder – found the röntgen-images of someone else’s broken heel.



type	date	filename	size	author
radiograph	14.01.2021	1f713c4c-6975-4760-ada1-9cc485930adc.PNG	1,2MB	Michiel De Cleene

category
data storage, mistake, medicine, fissure

23:40:37

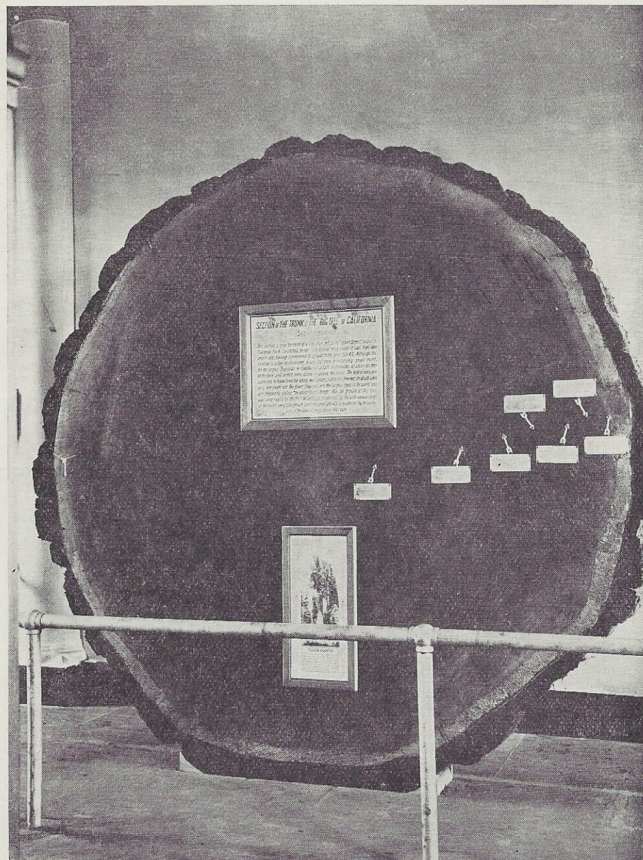
(*'Slice of more than three meters in diameter, sawn from a Mammoth-tree, given by California to the botanical garden of New York, and presented there'*)

Thiery describes the 'patriarchs' of the plant world. This slice of a Sequoia, which fell in 1917 in Yosemite National Park, is 1694 years old. A woman of the New York Botanical Institute, where the slice of the patriarch is presented, counted the rings. If one would look at the picture with a magnifying glass, Thiery writes in a footnote, the reader (with good eyes and a fair amount of knowledge of the English language) would be able to read the labels indicating the important global events the tree witnessed. They are transcribed and translated by the author. The end of the Roman occupation of Great Britain. Columbus arriving in America. The Declaration of Independence. This is a lie: the text is illegible, even when using a magnifier.

In the photograph, the slice, as on view in the New York Botanical Institute, is presented upright. To prevent it from rolling away, two small triangular slices of wood were posited at the left and right side of the slice. The type of wood of these slices, nor the age of the patriarch from which they stem, are known.

Sources

Thiery, M. *Het woud. Een proeve van plantenaardrijkskunde*. Gent: De Garve, s.d., p. 59.



Uit een Mammoet-boom gezaagde schijf van ruim drie Meter doorsnede, door Californië aan den Plantentuin van New-York ten geschenke gegeven, en aldaar tentoongesteld.

type
scan

date
04.01.2021

filename
Document_2021-01-04_114324.jpg

size
3,1MB

author
Arnout De Cleene

category
book, botany, card, tree, scale, sign, mistake

23:40:38

‘Because there is a kind of technological beauty to it.’

[...]

‘Yes, a perfect combination of the analogous on the one hand, and a kind of state of the art-futuristic cool on the other hand. It was elegant (unlike audio-cassettes), you could see the disc upon which your music was written (unlike the unfathomable MP3), it was less fragile than a CD(-R), and conveniently sized (you could hold it in the palm of your hand, slip it into your pocket). It had a kind of Mission Impossible-esque gadget feel to it. It had the aura of being permanently ahead of its time, but not in a far-fetched sci-fi kind of way. It was *real*.’

[...]

‘You mean the clicks. Yes, it had a sound of its own. A pleasant sound – the hard plastic hitting the hard plastic sleeve. The slidable, uhm, metal thing. The small read/write handle at the side. The small disc that was just a little bit loose. It – without being played – looked, felt and sounded like, like data, yes, like palpable data.’

[...]

‘Not any more.’

[...]

‘My uncle’s Elvis Costello *This Year’s Model* LP with way too little bass-sounds. *Watching the detectives*, to be precise.’



type	date	filename	size	author
scan	26.12.2020	Handgeschreven_2020-12-26_141512.jpg	608KB	Arnout De Cleene

category
data storage, music, technology, family

23:40:40

At the State Archive in Kortrijk, I am leafing
through a 1955 photo album of the construction of
the provisional church in Lokeren by the famous
furniture company Kunstwerkstede De Coene.
Gigantic wooden, prefabricated beams structure
the building. It is cold. An old man in a grey suit
shuffles between the racks to look up the date of
birth of his great great grandmother. Snow covers
the unfinished provisional roof. A bus passes,
I reckon, through the pouring rain.



type	date	filename	size	author
audio	22.12.2020	VP100184.MP3	1,8MB	Arnout De Cleene

category
archive, architecture, book, data storage, De Coene, precipitation

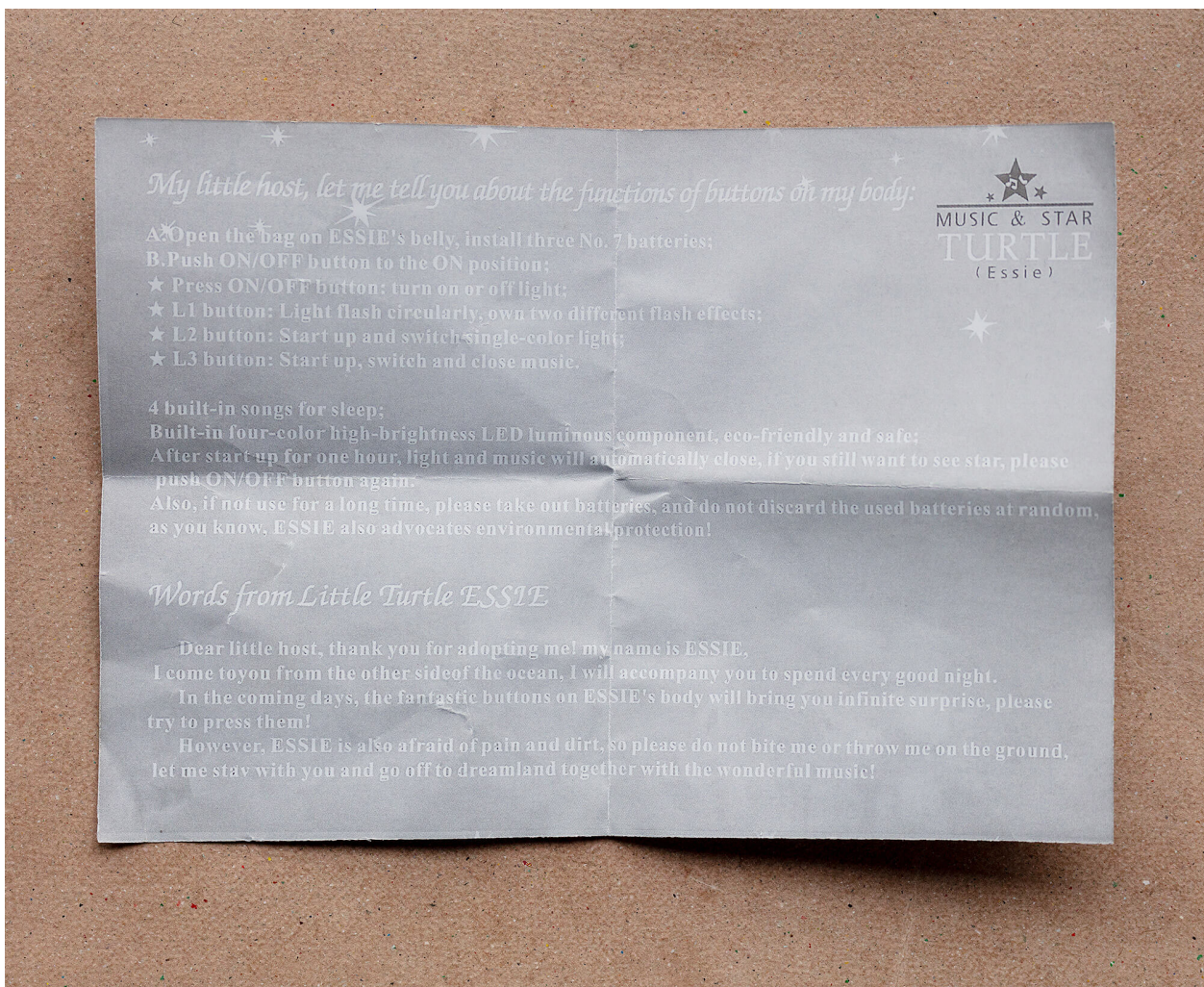
23:40:40

I bought my son a gift while abroad: a toy turtle named Essie whose perforated shield projects stars onto the ceiling in blue, green or amber. ‘8 actual star constellations’, the box proclaims.

The manual explains how to power up the turtle and what the four buttons on Essie’s back do. The small document (recto: Chinese, verso: English) concludes with some ‘Words from Little Turtle ESSIE’. In it the turtle shifts from direct speech to illeism¹ and back.

Notes

1 The act of referring to oneself in the third instead of first person.



type
photograph

date
17.12.2020

filename
_44A8424.dng

size
50,6MB

author
Michiel De Cleene

category
animal, astronomy, Bahrain, manual, family

23:40:40

All chairs are empty, but all face something different. The bottom photograph shows empty chairs facing empty desks. In the middle picture, empty chairs face each other (underneath the inaudible sound of the cinema above). In the top photograph, the chairs seem to be facing the photographer. However, the altar's in front of the photographer. He stands at the back of the provisional church. The chairs face the photographer and have turned their backs to the altar.

Sources

Revue Héraclite, 5 (1), april 1936, p. 7, paper, from the archive of architect O. Clemminck.



**Eglise Provisoire
St. Laurent à Anvers**

Isolation de sous-toiture en plaques Héraclite. — Architecte: M.G. Huygh à Anvers. — Phot.: L. Van Eynde à Anvers



**Café-Concert
„Mon Village“, en plein
centre de Bruxelles**

Application de l'Héraclite comme isolation du plafond (Environ 1500m² Héraclite 5cm). Doublage du plafond en béton en nervure. L'établissement est situé exactement en-dessous du Cinéma „Ambassador“ et il y a lieu de prendre sérieusement en considération que le bail portait en cause principale qu'aucun bruit ne pouvait gêner l'exploitation du Cinéma, même dans ses auditions les plus silencieuses. — Architecte: M. Jos. Govaerts à Bruxelles. — Phot.: La Photographie Industrielle Bruxelles



**Défense Automobile et
Sportive (D.A.S.), Siège
social au Mans**

Aménagement de bureaux sous combles en Héraclite 2 1/2cm. — Architecte: M. Grigné, D.P.L.G.

type
scan

date
14.12.2020

filename
Document_2020-12-14_164943.pdf

size
4,2MB

author
Arnout De Cleene

category
automobile, architecture, archive, O. Clemminck

23:40:40

A square photograph with an Arabic and French text underneath it is mounted on a foam board, in turn mounted on a sheet of plexiglass. The picture in the middle is flanked by a photograph of and a text about the tumuli of Umm Jidr (left) and the excavations at Abou Saybi (right). They are mounted on the West wall of Guest Room 3 at the Qual'at Al-Bahrain Site Museum, Seef, Bahrain.

Necropolises make up the main archaeological testimonies of the Tylos period (4th century BC – 3rd century AD). The urn in the photograph contains the remains of several babies. They most likely fell victim to an epidemic. The size of the ruler next to the urn remains unspecified.

Notes

The photograph of Room 3 was made while in mandatory self-isolation after flying to Bahrain from Frankfurt and waiting for the result of a Covid-19 test.



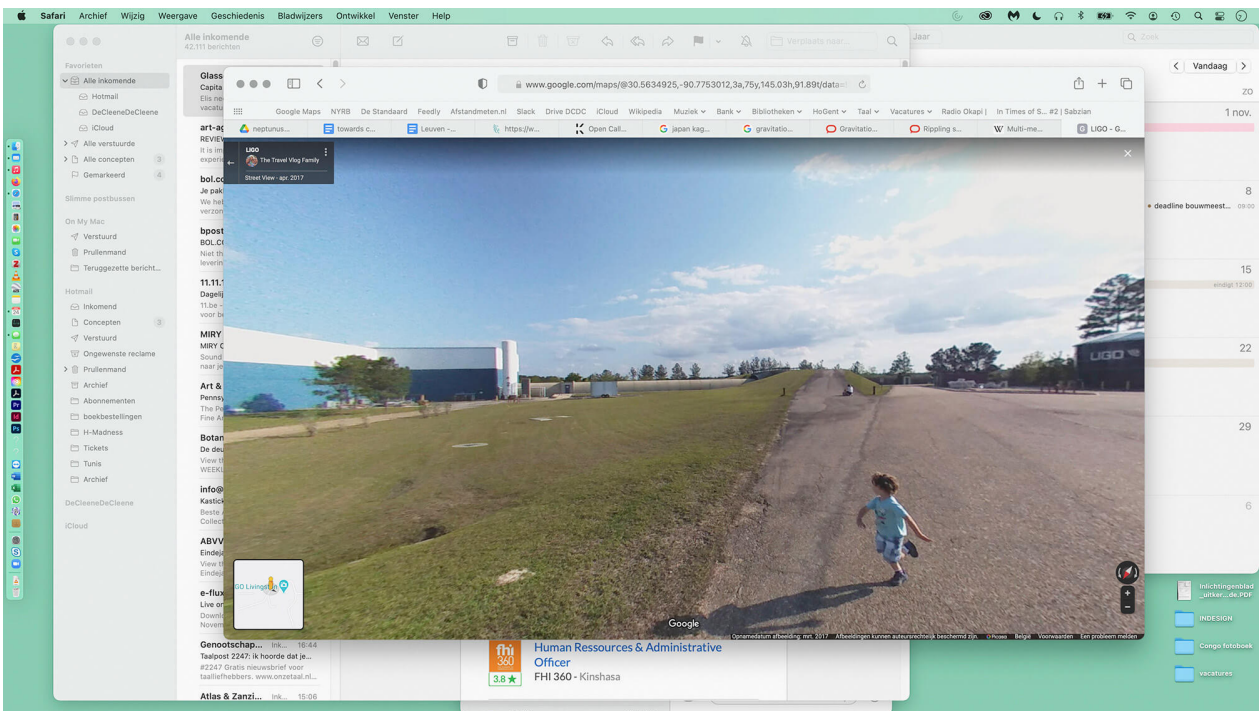
type	date	filename	size	author
photograph	11.12.2020	_44A7372.dng	49,3MB	Michiel De Cleene

category
archaeology, Bahrain, epidemic, scale, decoration

23:40:40

To detect gravitational waves, physicists built enormous research centers, amongst others at Livingston, Louisiana. The facility mainly consists of two tunnels in an L-shape. Mirrors inside provide data. Disturbances from gravitational waves are miniscule. To prevent interference from outside, such as vibrations caused by people passing in the neighbourhood, the mirrors have to be detached from the earth. They 'float', suspended by glass fibers in a pendulum-like construction.

As I was watching my screen, a courier was on his way to deliver a book (Noel-Todd, J. *The Penguin Book of the Prose Poem: From Baudelaire to Anne Carson*. London: Penguin, 2019).



type	date	filename	size	author
screenshot	24.11.2020	LIGO.png	6,9MB	Arnout De Cleene

category
 physics, seismology, mirror, interference, book, architecture, mistake

23:40:41

In June, 2014, a severe hailstorm hit Belgium. Warnings were broadcast. A football game between the national teams of Belgium and Tunisia was paused. The morning after, there were small dents in the hood and the roof of the car, each a square centimeter in size, some 10 centimeters separated from each other. The storm didn't get a name.

Assessing the damage, the insurance company's expert took the dents into account to establish the wreck's worth.



type
photograph

date
16.10.2020

filename
IMG_2236.JPG

size
2,8MB

author
Arnout De Cleene

category
automobile, crash, precipitation, insurance

23:40:45

A malfunctioning of the camera leading to a double-exposed negative. The car is decisive in establishing the relationship between the superimposed photographs. In the middle of the image, we see it parked in front of the house. Slightly less visible is the same car, repeated but further away. This makes it possible to deduce that the dark outline of the house, with the roof and the chimney, is also the same house as in the other photograph. This time, the house is photographed relatively frontally (the slightly angled point of view allows to bring the shed at the back of the house in the line of sight), and from nearby. At the bottom left, the lines that make up the street help to see the continuity of the one photograph, while the electric wires at the top right aid to comprehend the other one.

The camera malfunction speculates on a future addition to the plot. The dark, outlined shed's scale is realistic with regards to the scale of the house and itself (the shed) in the other photograph. Its position with regards to the other buildings seems logical. It imposes itself as a possible second shed for the owner to build in the next few years. In that future shed, the car, now standing in front of the house, could be comfortably parked.



type	date	filename	size	author
scan	25.10.2023	021a_14.jpg	1,29 MB	De Cleene De Cleene

category
architecture, archive, automobile, house, panorama, parking, scale

23:40:45

The scientific exactitude sought for in the *Iconographie de la Salpêtrière* and the *Nouvelle Iconographie de la Salpêtrière*, the (in)famous scientific publications stemming from Paris' psychiatric hospital La Salpêtrière (1876-1918), lead to an abundance of photographic images in their pages. The photographs' ideal: 'Trace incontestable, incontestablement fidèle, durable, transmissible'.¹ The ambition of exactitude results in cold, and often cruel depictions of patients. In the digitized version of the Sorbonne library's copies, some photographs have left an imprint on the opposite page. The knee of Charles, 'le géant', adds an unwanted layer upon its measures on the opposite page, while the photograph of the knee itself loses ink.²

Sources

- 1 Didi-Huberman, G. *Invention de l'hystérie*. Paris: Macula, 2014, 72.
- 2 Launois, P.-E., Roy, P., 'Gigantisme et infantilisme', *Nouvelle Iconographie de la Salpêtrière*, Tome XV, 1902, 548, pl. LXVI, online: <https://patrimoine.sorbonne-universite.fr/fonds/item/2613-nouvelle-iconographie-de-la-salpetriere-tome-15?offset=6>

	mai 1899	novembre 1902
Hauteur de la malléole interne	87 mm.	79 mm.
Longueur du pied	287 »	299 »
Longueur du 1 ^{er} orteil avec le métatarsien	143 »	» »
Longueur du 2 ^e orteil seul	82 »	» »
Longueur du 1 ^{er} orteil (partie libre)	48 »	» »
Largeur bicondylienne.	108 »	» »
Largeur bimalléolaire	81 »	» »
Largeur du pied	126 »	» »
<i>Membre supérieur gauche.</i>		
Hauteur de l'humérus	381 »	422 »
Hauteur du radius.	298 »	298 »
Longueur de la main.	233 »	243 »
Longueur du médus.	118 1/2	124 »
Longueur du pouce avec le métacarpien.	125 »	126 1/2
Longueur du pouce seul	72 »	76 »
Longueur de l'ongle du médus	16 »	16 »
Largeur de l'humérus (extrémité inférieure)	74 »	83 »
Largeur du poignet	67 »	69 1/2
Largeur de la main	97 »	103 »
<i>Circonférences.</i>		
Cou.	370 »	370 »
Thorax	1015 »	1040 »
Taille	892 »	925 »
Bras	280 »	260 »
Avant-bras	271 »	250 »
Poignet	197 »	197 »
Cuisse : circonférence supérieure à droite	544 »	» »
— — à gauche	539 »	450 »
— inférieure à droite.	420 »	» »
— — à gauche	399 »	» »
Mollet : droit.	382 »	» »
gauche	375 »	350 »
Malléoles (droite et gauche).	240 »	» »
<i>Tête.</i>		
Hauteur naso-alvéolaire	87 »	87 »
Hauteur naso-sous-nasale.	64 »	64 »
Largeur biangulaire interne (yeux).	36 »	37 »
Hauteur ophryo-alvéolaire.	102 »	102 »
Largeur biangulaire externe (yeux).	96 »	» »
Largeur bimastoïdienne.	142 1/2	145 »
Diamètre antéro-postérieur glabellaire.	199 »	200 »
Hauteur ophryo-mentonnaire.	154 »	159 1/2
Diamètre antéro-postérieur métopique.	195 »	197 »

type	date	filename	size	author
scan	01.09.2023	Pagina's van CS_000015_015_pdf-2.pdf	184 KB	Arnout De Cleene

category
archive, book, interference, medicine, replica/copy

23:40:45

NOUVELLE ICONOGRAPHIE DE LA SALPÊTRIÈRE.

T. XV. Pl. LXVI



Cliche Infron

Phototypie Berthaud, Paris.

GIGANTISME ET INFANTILISME
(P. E. Launois et Pierre Roy).

Le genou du géant Charles
(Genu valgum tardif et persistance à l'âge de 30 ans)

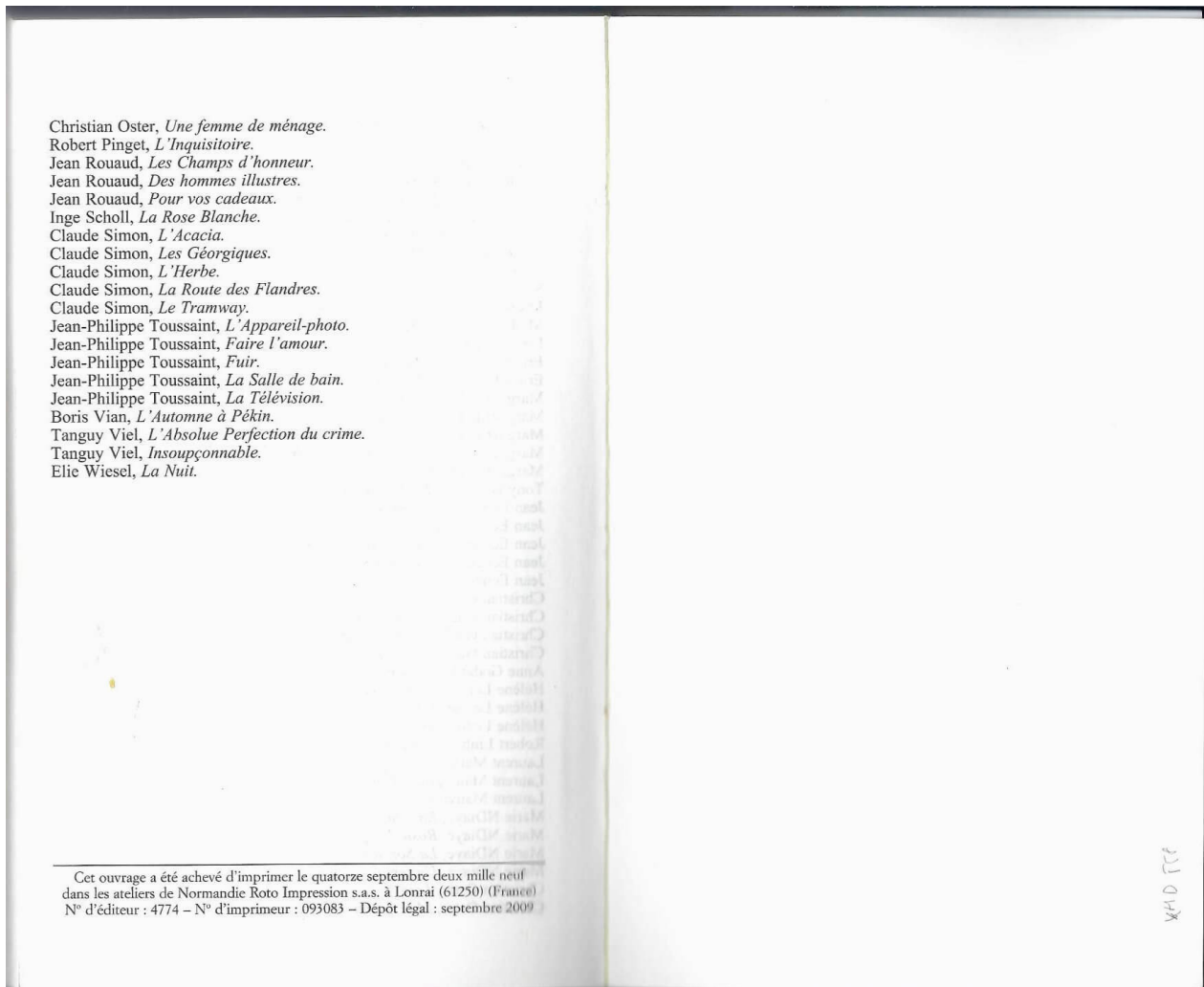
During the preparation of a seminar, I reread Pierre Bayard's *Qui a tué Roger Ackroyd?* (2008). On the inside of the back cover, there's an inscription: it appears I wrote down a license plate number – something I have the habit of doing when a situation seems suspicious.

In *Qui à tué Roger Ackroyd?*, Bayard analyzes Agatha Christie's famous detective novel *The Murder of Roger Ackroyd* (1926). The literary critic disagrees with detective Hercule Poirot's conclusion: Ackroyd's murderer is not the narrator, James Sheppard, as Poirot would have it. It's a delirious interpretation, 'consistant à rechercher minutieusement des indices, à interpréter des faits et à organiser nos déductions en une construction d'ensemble harmonieuse'.

The car with license plate number XHD 558 is unknown to me. I can't recall what I saw that urged me to write it down, nor the time or location when I saw it.

Sources

- Bayard, P. *Qui a tué Roger Ackroyd?* Paris: Minuit, 2008.



type	date	filename	size	author
scan	15.08.2023	ackroyd.pdf	431 KB	Arnout De Cleene

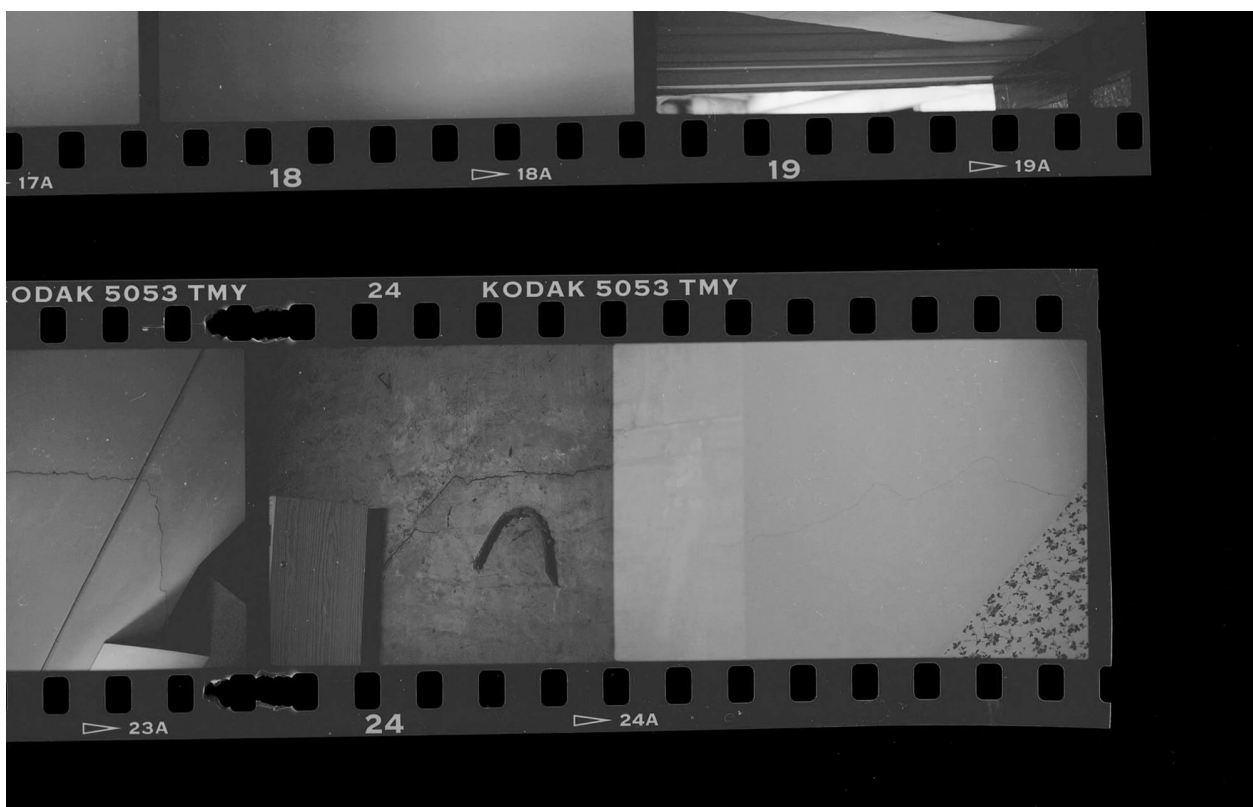
category
 angst, automobile, book, literature

23:40:50

In Walter Benjamin's *The Arcades Project*, Convolute Q is dedicated to the panorama. Benjamin writes: 'Setup of the panoramas: View from a raised platform, surrounded by a balustrade, of surfaces lying round about and beneath. The painting runs along a cylindrical wall approximately a hundred meters long and twenty meters high. The principal panoramas of the great panorama painter Prévost: Paris, Toulon, Rome, Naples, Amsterdam, Tilsit, Wagram, Calais, Antwerp, London, Florence, Jerusalem, Athens. Among his pupils: Daguerre' (Q1a, 1).

Sources

- Benjamin, W. *The Arcades Project* (H. Eiland & K. McLaughlin, trans.). Cambridge/London: The Belknap Press of Harvard University Press, 2002, p. 528.



type	date	filename	size	author
scan	31.05.2023	013b_16.jpg	1,18 MB	De Cleene De Cleene

category
architecture, archive, decoration, fissure, panorama

23:40:51

It has been snowing. A black BMW is parked on the other side of the street and is cut in half by the separation between negatives 4 and 5. Apart from a slight kink in the landscape, the negative on the right is a perfect continuation of the one on the left. The fence around the orchard, the branches of the apple tree and the power lines connect implicitly in the void between the negatives.

Notes

- Based on De Cleene De Cleene, *The Situation as it Is. A Photonovel in Three Movements* (APE, 2022).



type	date	filename	size	author
scan	08.05.2023	55f-56a.jpg	1,34 MB	De Cleene De Cleene

category

architecture, archive, automobile, botany, family, mistake, trompe l'oeil, precipitation, tree, landscape, panorama

23:40:51

The architect's photographic archive contains seven images that can be labelled as panoramic pictures. However, they only appear as such when the photographs are viewed in the archive, as strips of negatives. In order to see the panoramic construct, the viewer needs to be presented with two consecutive negatives.

There are two kinds of panorama in the archive: the kind that can only be attributed to a kind of laziness or a need for efficiency on behalf of the architect, and another that originates from frugality.

The former type of panorama is created when the architect is documenting the situation as it is: it is compulsory to document the context of the building or lot, as part of a building application. He simply pivots from left to right, capturing the first and second photograph consecutively. On the filmstrip a panorama appears.

The other kind of panoramic picture only appears at the end of the film role. The last negative on the film has been exposed (the twenty-fourth or thirty-sixth), after which he exerts force onto the lever to move the film forward anyway. Some films are known to have, by accident, a twenty-fifth or a thirty-seventh negative. The plastic between the sprocket holes tears and the film does not advance enough. The result differs fundamentally from the other kind of panorama: there is no separation, no void between the negatives. Rather, there is a slight overlap. A thin, vertical strip of film that has been exposed twice, suggesting contiguity that might not be there. The two exposures might be from altogether different sites, creating a new situation.

Notes

- Based on De Cleene, M. & De Cleene, A. *The Situation as it Is. A Photonovel in Three Movements*. Gent: APE, 2022



type	date	filename	size	author
scan	27.04.2023	002_17.jpg	1,45 MB	De Cleene De Cleene

category
architecture, archive, house, mistake, precipitation, family, panorama

23:40:53

I drove through the neighborhood seeking evidence of the disruption using a power outage map as a compass. Winding through quiet streets, I stumbled upon a lone blue PG&E truck idling opposite a charred utility pole with fragments of wood and wire strewn across the pavement. I parked my car and walked toward the truck to ask the driver what had happened. He pointed to the top of the pole where a porcelain insulator dangled precariously from a high-voltage line. "Tracking," he said curtly. "Is that like a short circuit?" I asked. "Kind of," he replied before pausing. He finally elaborated, explaining that the problem arises when moisture from morning fog settles on power lines, creating a pathway for electricity to arc across components.

He then input something into a handheld device before driving away, leaving the repair for another service team to complete. I gathered the debris intending to collect the remaining components that comprise a utility pole, each having failed in one form or another. I shipped the fragments to Maziar the following week.

Notes

- Mathew Kneebone is an artist based in San Francisco. His interdisciplinary practices takes different forms, all in relation to an interest in electricity and technology. He teaches studio and thesis writing at California College of the Arts.



type	date	filename	size	author
photograph	24.02.2023	02_tracking.jpg, 03_tracking.jpg	3,51 MB, 324 KB	Mathew Kneebone

category
automobile, collecting, encounter, hand, impact, map/plan, precipitation, repair, technology

23:40:53



On a windy morning in April, I was on a video call with a friend, curator Maziar Afrassiabi. He listened patiently from Rotterdam as I labored over a direction for my research. It concerned a device I installed in his art space, Rib, six months prior, that monitored blackouts across California by scraping real-time data from utility companies. When a county experienced a significant blackout, it would cut Rib's electricity in kind—causing Rib to inherit and adapt to conditions that shape Californian infrastructure. During its operation, I'd been researching the grid—learning what it is, why it fails, and how communities respond when it does.

We took a short break. Maziar, with tired eyes, stepped away for a smoke. While waiting, I watched the power lines outside my window sway limply in the breeze. In spite of its apparent lifelessness, I've always thought of electricity as a psychological force. My mind wandered through a cursory model of the grid, idiosyncratically cloudy and detailed.

Energy simultaneously generated and used, cascading infrastructural operations in a blink. Outlying stations burning, vaporizing, absorbing fuel, spinning vast electromagnetic turbines. Oscillating current. Neighboring transformers boosting volts to kilovolts, compensating for lost energy coursing through long-distance transmission supported by pylons peppered across Menlo Park.

Current flows into enclosed substations. Transformers, insulators, resembling a kind of industrial Watts Towers—though uninhabitable and anonymous by comparison—step voltages back down to levels safe enough for wires traversing the city. They branch out through streets via buried cables or, like the lines outside my window, are strung atop Douglas fir utility poles at roughly 30-meter intervals...curious vestigial markers. I'd read somewhere they were provisionally pitched when Samuel Morse found that telegraph signals wouldn't transmit through the earth.

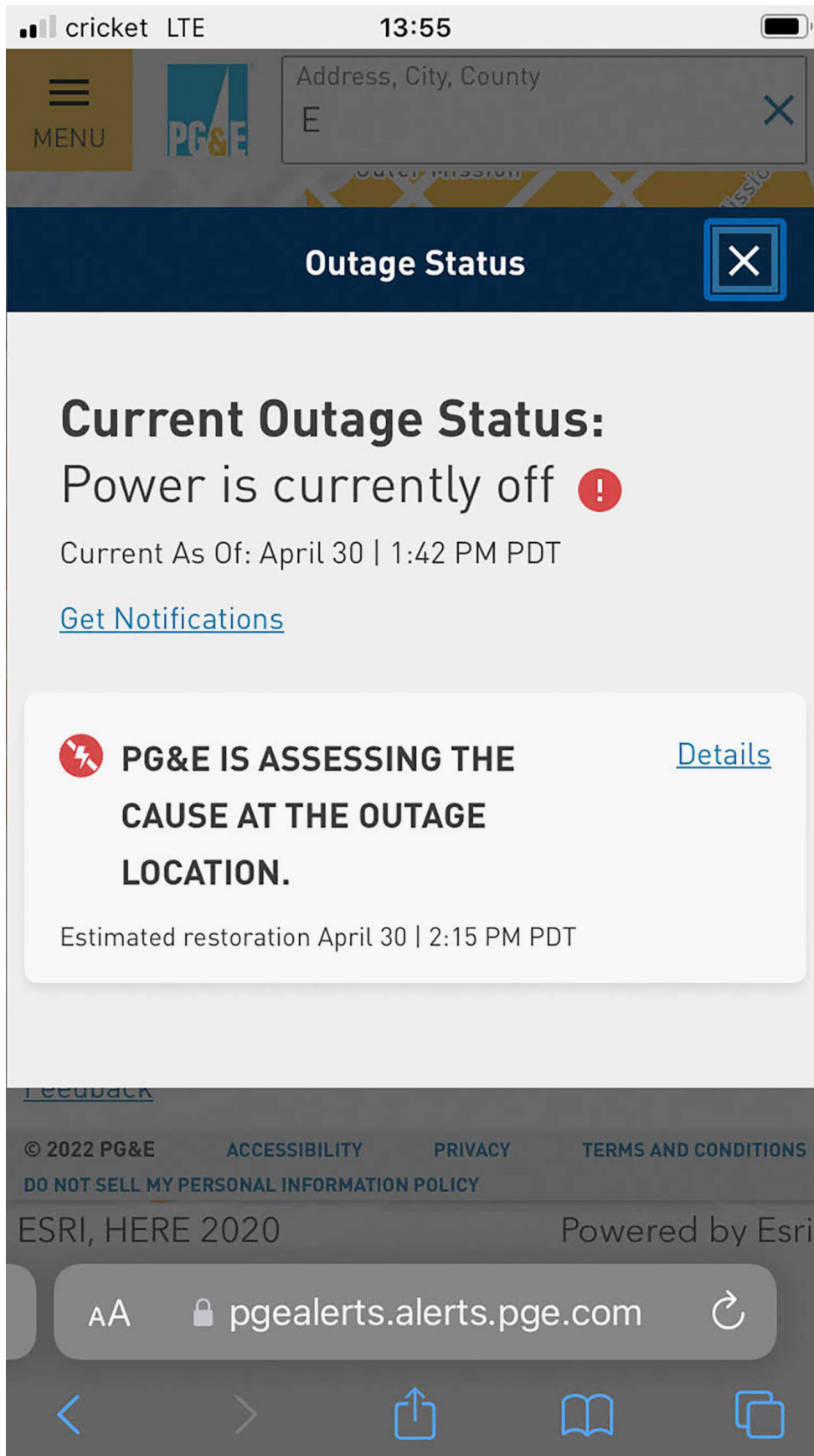
Each pole divides vertically into distinct zones, spaced apart for safety. Treacherous high-voltage wires from substations pass along the top, while safer signals—cable internet and landlines—hang nearest to the ground. The high-voltage wires enter through a barrel-shaped pole-mounted transformer. Within, submerged in oil, two tightly wound copper

coils magnetically harmonize, delivering 240 and 120 volts to three exiting wires, each connected to the electrical meter attached to the building...

A blackout in my neighborhood cut my thoughts and the meeting short. The sudden silence in my apartment indicated Maziar was also in the dark. I received a text message from him and the utility company.

Notes

- Mathew Kneebone is an artist based in San Francisco. His interdisciplinary practices takes different forms, all in relation to an interest in electricity and technology. He teaches studio and thesis writing at California College of the Arts.



type
screenshot

date
18.02.2023

filename
unnamed.jpg

size
84 KB

author
Mathew Kneebone

category
house, interference, technology, tree, wind

23:40:53

‘The saw cuts are sloppy and appear to be made in a haste.¹ The cuts are situated at a height of approximately seventy centimetres from the ground. The hill’s protected woods have seen an increase in these scattered traces of illegal logging since a rise in tax on heating fuel in October 2012. Many Greeks set about logging illegally in protected woods, mostly in the colder North of the country, but also here in Egaleo, a western suburb of Athens.’

Notes

1



- First published in: De Cleene, M. *Reference Guide*. Amsterdam: Roma Publications, 2019



type	date	filename	size	author
photograph	03.02.2023	mt_eg_003.tif, mt_eg_004.tif	88 MB, 86,40 MB	Michiel De Cleene

category
economy, encounter, government, landscape, Reference Guide, tree

23:40:56



On 12 October 2022, I see a third orange Sparta K-10 listed on marktplaats.nl, after Tineke and Fred's. It is sold by one Fr from Zevenaar. Fr put the bike up for sale four days earlier. According to Fr, it is a 'luxury station bike' and 'camping bike'. He is asking 199 euros for it. Fr explains the bike as follows:

'Luxury sparta unisex bike with 3-speed shimano-nexus.
Striking specimen.
Looks like new.
Please note.....fixed price!
Ideal for station, camping or for some nice touring.
Equipped with:
Front and rear battery lighting
Handy front and rear luggage rack
All-terrain tyres
3-speed gearbox
Comfortable drifter saddle
Integrated cable lock
Large dingdong bell
A real eye-catcher'¹

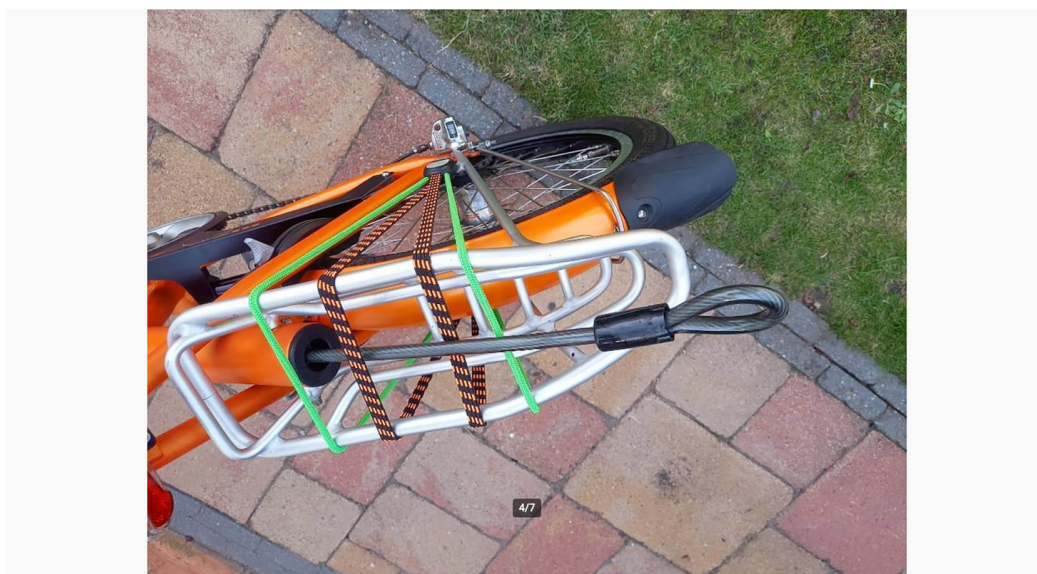
According to Fr, the price is fixed, but on the website you can make an offer, albeit only from 199 euros. Fr's Sparta K-10 has three gears. The Sparta K-10s of Tineke, John and Fred that are still for sale do not have gears, the Sparta K-10s in Rue Verte in Brussels and on cyclonewebshop.be do not have them, and in the 2011 Sparta leaflet we did not see that option either. In short, we come across a Sparta K-10 with gears for the first time. There is a small typing error in Fr's explanation in Dutch – the t in *geïntegreerd* is missing – but those who like to browse on marktplaats.nl read smoothly over that. One of the photos of Fr's ad shows the loop attached to the back of the bike. You can clearly see how that loop forms the end of an integrated cable lock.

Notes

- 1 'Luxe sparta unisex fiets met 3 versnellingen shimano-nexus.
Opvallend design exemplaar.
Ziet er uit als nieuw.
Let op.....vaste prijs!
Ideaal voor station, camping of zo om lekker mee te toeren.
Voorzien van:
Batterijverlichting voor én achter
Handig bagagerek voor én achter
All terreinbanden
3 versnellingen
Verende zadelpen
Comfortabel drifter zadel
Geïntegreerd kabelslot
Grote dingdong bel
Een echte eye-catcher'
- Lars Kwakkenbos lives and works in Brussels and Ghent (B). He teaches at KASK & Conservatorium in Ghent, where he is currently working on the research project 'On Instructing Photography' (2023-2024), together with Michiel and Arnout De Cleene.

The Loop of the Sparta K-10

Sparta K-10 luxe stationsfiets campingfiets 3V



Kwaliteit tegen de beste prijs
Carrefour express RUE ROYALE

type	date	filename	size	author
screenshot	23.01.2023	Screenshot 2022-10-12 at 22-19-22 Sparta K-10 luxe stationsfiets campingfiets 3V – Fietsen Dames Damesfietsen – Marktplaats.png	1,68 MB	Lars Kwakkenbos
category	bicycle, economy, technology			

How slanted is this saddle? Anyone looking at the full photo of this Sparta K-10 might think that the street fence is pushing its saddle down at an angle. However, the bike and its saddle are leaning against the fence, they are not pushed under it. Whether the saddle is as slanted as the photo suggests, we are not sure. This detail of the photo suggests otherwise. The rail to which the saddle is attached is already mounted slightly less slanted than the line of the fence behind which the saddle is partly hidden, and above that part of the fence something vaguely protrudes from the back of the saddle. Presumably that is the edge of the saddle, which would reassure us about the cyclist's comfort.

Notes

- Lars Kwakkenbos lives and works in Brussels and Ghent (B). He teaches at KASK & Conservatorium in Ghent, where he is currently working on the research project 'On Instructing Photography' (2023-2024), together with Michiel and Arnout De Cleene.



type
photograph

date
22.01.2023

filename
Naamloos.jpg

size
189 KB

author
Lars Kwakkenbos

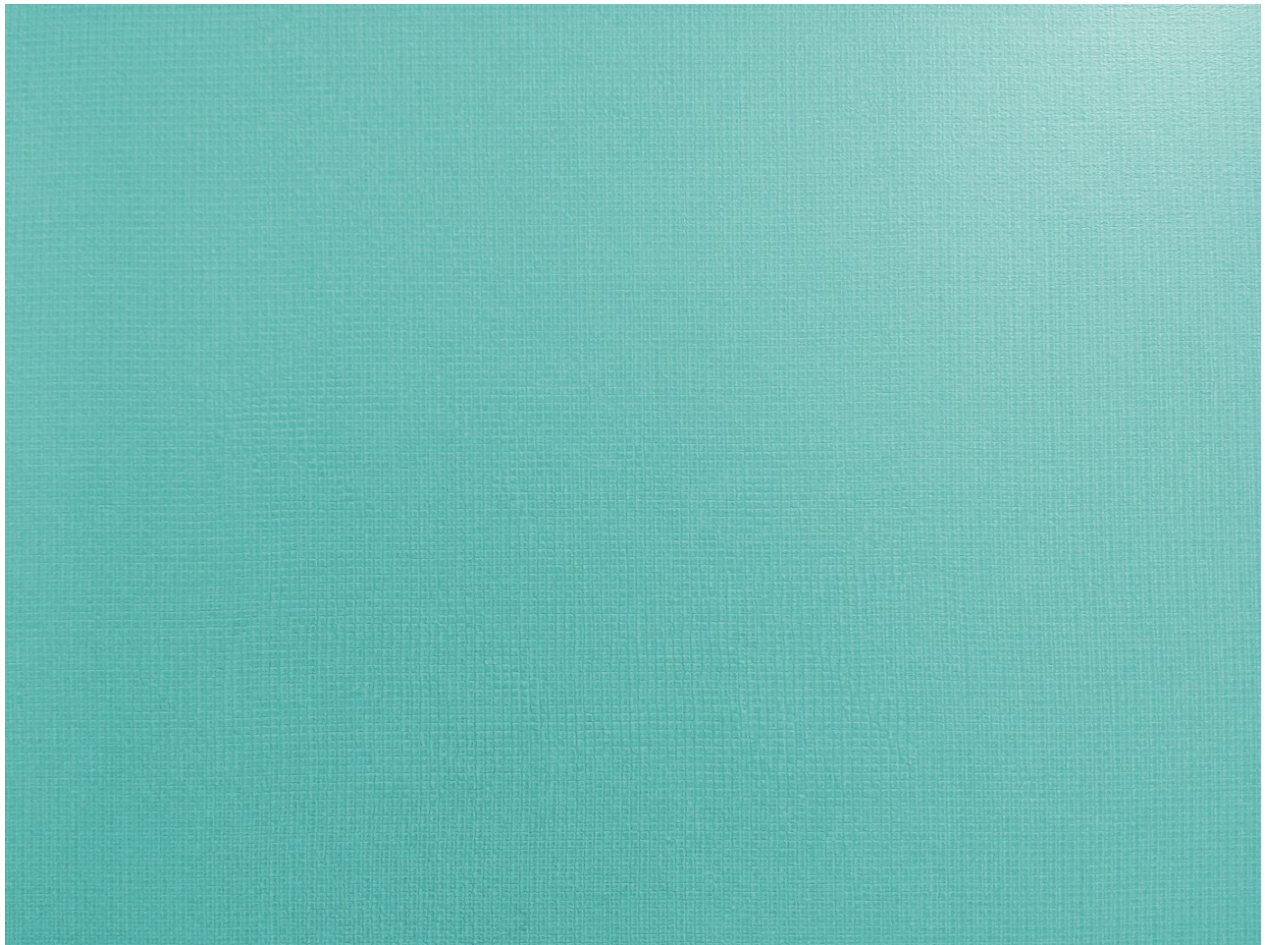
category
bicycle

23:40:56

According to @missbluesette, the green K-10 put up for sale by Fred from Zwolle that I came across on marktplaats.nl on 29 September 2022 is not green, but blue. The colour resembles turquoise, I explain, a colour I have always called green. No, turquoise is not green, but blue, she replies. And the texts of my Instagram posts are too long, she says, so she doesn't read them.

Notes

- Lars Kwakkenbos lives and works in Brussels and Ghent (B). He teaches at KASK & Conservatorium in Ghent, where he is currently working on the research project 'On Instructing Photography' (2023-2024), together with Michiel and Arnout De Cleene.



type	date	filename	size	author
image	19.01.2023	teal-turquoise-plastic-with-square-pattern-texture.jpg	308 KB	Lars Kwakkenbos

category
bicycle, encounter, mistake

Fred from Zwolle offers two Sparta K-10s on Marktplaats.nl on 29 September 2022. The asking price for the two bikes is 250 euros, bids may start from 200 euros. The green bike has a front light that is powered by a rim dynamo, while in another photo we see a front light on the orange bike that is presumably battery-powered, as may be the case for the rear lights. The carrier mounted at the front of the green bike is clearly a luggage carrier, as is the one at the back. What the carrier mounted at the front of the orange bike is for, is unclear. The description of the bikes does mention the function of the loop protruding from the frame at the back of the Sparta K-10:

‘20-inch bikes that we have always used while camping. No gears but smooth and light pedalling. Ideal for running small errands close by or a quick errand in the toilet building. They are light and quite short making them easy to take on the train. Ideal as a short-distance bike between station and work. Both are, furthermore, in good condition. Each bike comes with a key for the integrated cable lock. Are listed as a ladies’ bike but I (male) get on just fine.’¹

Notes

- 1 ‘20 inch fietsen die wij altijd tijdens het kamperen hebben gebruikt. Geen versnellingen maar soepel en licht trappend. Ideaal om kleine boodschappen dichtbij te doen of een snelle boodschap in het toilet gebouw. Ze zijn licht en vrij kort waardoor ze makkelijk mee te nemen zijn in de trein. Ideaal als korte afstandfiets tussen station en werk. Beiden zijn verder in goede staat. Van elke fiets beide sleutels aanwezig voorzien van een geïntegreerd kabelslot. Worden als damesfiets genoemd maar ik (man) kom er prima mee vooruit.’
- Lars Kwakkenbos lives and works in Brussels and Ghent (B). He teaches at KASK & Conservatorium in Ghent, where he is currently working on the research project ‘On Instructing Photography’ (2023-2024), together with Michiel and Arnout De Cleene.

The screenshot shows a Marktplaats listing for a Sparta K-10 bicycle. The listing includes a main image of the bicycle, a price of €250,00, and a 'Bewaar' button. The seller's profile, Fred, is visible on the right, showing 7 reviews and a 'Bericht' button. The listing also features a 'Bieden' section with a starting price of €200,00 and a 'Plaats bod' button. The bicycle is described as a 'Dames Damesfietsen' and is located in Zwolle.


Marktplaats Help en info Voorwaarden Veiligheidscentrum Berichten Meldingen Lars Kwakkenbos Plaats advertentie

Alle categorieën... Postcode Alle afstanden... Zoek

Terug Home > Fietsen en Brommers > Fietsen | Dames | Damesfietsen > Advertentie m1875934349

Sparta K-10 (korte afstand/trein fiets) [Bewaar](#)
 151 4 sinds 19 aug. '22, 16:53

€ 250,00
 Ophalen

 1/5

[Grote foto's](#)

Deel via [WhatsApp](#) [Facebook](#) [Twitter](#) [Email](#) of [Kopieer link](#)

Kenmerken

Conditie	Gebruikt
Merk	Sparta
Eigenschappen	Versnellingen

Fred
 2 jaar actief op Marktplaats
 Bekijk meer advertenties
 ★★★★★ 7 ervaringen

Deze verkoper heeft nog niet aangegeven een particuliere of zakelijke verkoper te zijn. [Lees meer](#)

Bankrekening gecontroleerd
 Betalen met IDEAL

Zwolle

Beantwoordt 35% van de berichten, meestal binnen 1 dag

[Bericht](#)

Bieden
 Vanaf € 200,00

€

[Plaats bod](#)

Geen biedingen geplaatst

type
screenshot

date
18.01.2023

filename
Screenshot 2022-09-29 at 12-19-38
Sparta K-10 (korte
afstand_trein fiets) – Fietsen
Dames Damesfietsen –
Marktplaats.png

size
522 KB

author
Lars Kwakkenbos

category
bicycle, economy

23:40:59

