

org is an online platform, collecting, describing, presenting and generating documents of all sorts. It documents documents.

Your path through the collection lead along Mould, 12M m3 [6/8] 56 years, N 47°12.346' E 18°10.400', Investment, LIGO, Roofing (2), Vérandah, Strings, Populus, Guzmania, Another letter from abroad, Investment, Crocodile Copy, Raisins, 12M m3 [8/8] Heating, 12M m3 [6/8] 56 years, 12M m3 [4/8] Dam, 12M m3 [2/8] Thaw, Marmara

What constitutes a 'document' and how does it function?

According to the *Oxford English Dictionary*, the etymological origin is the Latin 'documentum', meaning 'lesson, proof, instance, specimen'. As a verb, it is 'to prove or support (something) by documentary evidence', and 'to provide with documents'. The online version of the *OED* includes a draft addition, whereby a document (as a noun) is 'a collection of data in digital form that is considered a single item and typically has a unique filename by which it can be stored, retrieved, or transmitted (as a file, a spreadsheet, or a graphic)'. The current use of the noun 'document' is defined as '*something* written, inscribed, etc., which furnishes evidence or information upon any subject, as a manuscript, title-deed, tomb-stone, coin, picture, etc.' (emphasis added).

Both 'something' and that first 'etc.' leave ample room for discussion. A document doubts whether it functions as something unique, or as something reproducible. A passport is a document, but a flyer equally so. Moreover, there is a circular reasoning: to document is 'to provide with documents'. Defining (the functioning of) a document most likely involves ideas of communication, information, evidence, inscriptions, and implies notions of objectivity and neutrality – but the document is neither reducible to one of them, nor is it equal to their sum. It is hard to pinpoint it, as it disperses into and is affected by other fields: it is intrinsically tied to the history of media and to important currents in literature, photography and art; it is linked to epistemic and power structures. However ubiquitous it is, as an often tangible thing in our environment, and as a concept, a document *deranges*.

the-documents.org continuously gathers documents and provides them with a short textual description, explanation, or digression, written by multiple authors. In *Paper Knowledge*, Lisa Gittelman paraphrases ‘documentalist’ Suzanne Briet, stating that ‘an antelope running wild would not be a document, but an antelope taken into a zoo would be one, presumably because it would then be framed – or reframed – as an example, specimen, or instance’.

The gathered files are all documents – if they weren’t before publication, they now are. That is what the-documents.org, irreversibly, *does*. It is a zoo turning an antelope into an ‘antelope’.

As you made your way through the collection, the-documents.org tracked the entries you viewed.

It documented your path through the website.

As such, the time spent on the-documents.org turned into this – a new document.

This document was compiled by _____ on 15.02.2022 12:49, printed on _____ and contains 19 documents on 42 pages. (<https://the-documents.org/log/15-02-2022-3810/>)

the-documents.org is a project created and edited by De Cleene De Cleene; design & development by atelier Haegeman Temmerman.

the-documents.org has been online since 23.05.2021.

Notes

- De Cleene De Cleene is Michiel De Cleene and Arnout De Cleene. Together they form a research group that focusses on novel ways of approaching the everyday, by artistic means and from a cultural and critical perspective.
www.decleenedecline.be / info@decleenedecline.be
- This project was made possible with the support of the Flemish Government and KASK & Conservatorium, the school of arts of HOGENT and Howest. It is part of the research project *Documenting Objects*, financed by the HOGENT Arts Research Fund.

Sources

- Briet, S. *Qu'est-ce que la documentation?* Paris: Edit, 1951.
- Gittelman, L. *Paper Knowledge. Toward a Media History of Documents.* Durham/ London: Duke University Press, 2014.
- *Oxford English Dictionary Online.* Accessed on 13.05.2021.



Flanders
State of the Art



At a dental practice, the white Alligat[®]-powder is mixed with the right amount of water to get a mouldable dough that is pressed upon a patient's teeth. After thirty seconds, the Alligat[®]-dough stiffens and takes on a rubber-like quality. At that point, still white, it must be removed from the patient's mouth. Over the next few hours, the mould turns increasingly pink as the substance becomes less humid. Now, it can be used as a mould to create a positive master cast of the patient's teeth.

Outside the dental practice, the powder's possibilities remain to be fully explored.

Notes



Sources

- First published as part of De Cleene De Cleene. 'Amidst the Fire, I Was Not Burnt', *Trigger (Special issue: Uncertainty)*, 2. FOMU/Fw:Books, 25-30



type
photograph

date
27.01.2022

filename
_44A3429.tif

size
36,81 MB

author
De Cleene De Cleene

category
manual, medicine, packaging, repair, replica/copy

12:48:28

Where once there was twelve million cubic metres of water, excavators and trucks are moving dirt and rocks that have been hidden from sight for 56 years; piling them up into a temporary dam: a *batardeau*.



type	date	filename	size	author
photograph	05.12.2021	IMG_0512b.jpg	6,68 MB	Michiel De Cleene
category	drought, landscape, repair			

12:48:34

During the 1950s, as part of the communist reconstruction, a large coal/gas power plant was built close to the village of Inota, Hungary. This is the place where I grew up. It operated until about 1994. In the run-up to the final shutdown of the operation they gradually lowered its output. By this time the coal mines in the neighboring city had shut down as well due to the diminishing yield of the low-quality brown coal they had mined for the purpose of fueling the power plant. This resulted in mass unemployment and general decline in the area. The small lake in the photo is an artificial reservoir that collected all the water from the nearby streams. The substantial flow of one of those rivers powered about 11 water-driven flour mills; I know this on account of my grandmother, who would often pick up bags of flour for bread.

The ruin in the photograph once was a pumping facility that drove the water from the lake to the power plant about 3 kilometres away. In the years following the systemic change of Hungary and its celebrated evolution towards a western-type capitalism in '89-'90, the rules of ownership and the perception of public and private property were somewhat elusive. The lack of state control resulted in a transfer of public property to private hands on a monumental scale throughout the whole country, and – by extension – the Eastern Bloc. At the time some of the village dwellers of Inota, driven by the force of a major change and the prospect of a new, prosperous future of capitalist entrepreneurship, gathered to disassemble the water-pumping facility along the artificial lake. Slowly, day by day, under the mist of this elusive moment, they carried away carriageful after carriageful of bricks, disassembled

from the facade of the building. It was perhaps a way of taking revenge, but certainly also claiming the moment's opportunity. The bricks made their way into the walls of the new-built family homes of some of the villagers. The former water pumping facility became a sort of material reservoir for the construction of a new future. The transformation from a water reservoir to a material (and ideological) one and its subsequent exhaustion, left a ruin that has remained untouched for the last 30 years. The bricks that were difficult to reach were left in place, thus forming a curtain around the upper part of the building just above the pillars. Freed from all perimeter walls, the leftover structure appeared as a pavilion-like, open floor plan.

Notes

- The cliffs at the sides of the valley on the photo served as the location for the film *My Way Home* (Így Jöttem, 1965) by the iconic Hungarian filmmaker Miklós Jancsó, about a 17-year-old boy who falls prisoner to the Russian army and forms a friendship with one of the foes. The film is said to display all the main themes of the director: the psychological presence of landscape, the randomness of violence and the arbitrary nature of power.
- In the distance a formation of meadows can be seen in the photograph. Those meadows make up 16 acres of land that were given to my grandfather and subsequently inherited by my mother. It was a reparation for having been stripped of their wealth by the Soviet establishment in the 1950s. The worth of the land is a couple thousand euros as of today. It is part of the largest consistent nature reserve area of the EU.
- While standing on the cliffs and looking south-eastward, the power plant can be seen. The orientation of the photograph is approximately north facing.
- Turning southwards one can see the stone cellar, about a kilometre away, where my grandfather's adolescent sister had spent more than a year, while two German SS officers occupied their family home. During the advancement of the Red Army, a Russian soldier, entering the cellar, attempted to take advantage of her. The soldier's superior intervened and shot him in the head without hesitation. My parents store potatoes and apples in the cellar to keep them from rotting in the summer and freezing in the winter. It is easy to say when a potato or an apple comes from the cellar; it has an unmistakable, musty taste.
- Márk Redele pursues projects that fundamentally relate to architecture and its practice but rarely look like architecture. www.markredele.com



type	date	filename	size	author
photograph	08.11.2021	pavilion_.jpg	5,66 MB	Márk Redele

category
architecture, brick, economy, family, government, house, landscape

12:48:48

The oldest coin in the collection has darkened over time, but upon inspection, the text 'AD USUM BELGII AUSTR' (left) and the contours of a (female) head (right) can be discerned. A quick search learns it stems from the middle of the 18th century. The coin was made and used in the Austrian Netherlands, reigned by Maria Theresa, who is the one depicted. My mother recollects finding it in the backyard when she was a kid.

About 40 years later, the euro was introduced. The ringbinder with my mother's coin collection was taken from the shelf. A dilemma came to the fore: we wondered if we should keep one of each existing Belgian coin and banknote and put them in the binder, alongside Maria Theresa, or if we should exchange them for the new European currency. The decision to keep a coin of five Belgian francs was not difficult to make, but as the amount raised, the answer was increasingly hard to give. This was an assessment of the old currency's emotional and projected historical value, compared to its current financial worth. It was a decision based on investment principles.

To accentuate the value of the Maria Teresa kronenthaler of 1 liard, I put the coin on a pile of red post-it-notes when photographing it. Coins like these are sold on eBay for prices ranging from 0,70 euros to 16 euros.



type	date	filename	size	author
photograph	29.07.2021	_MG_6826.JPG; _MG_6825.JPG	6,7MB; 7,7MB	Arnout De Cleene

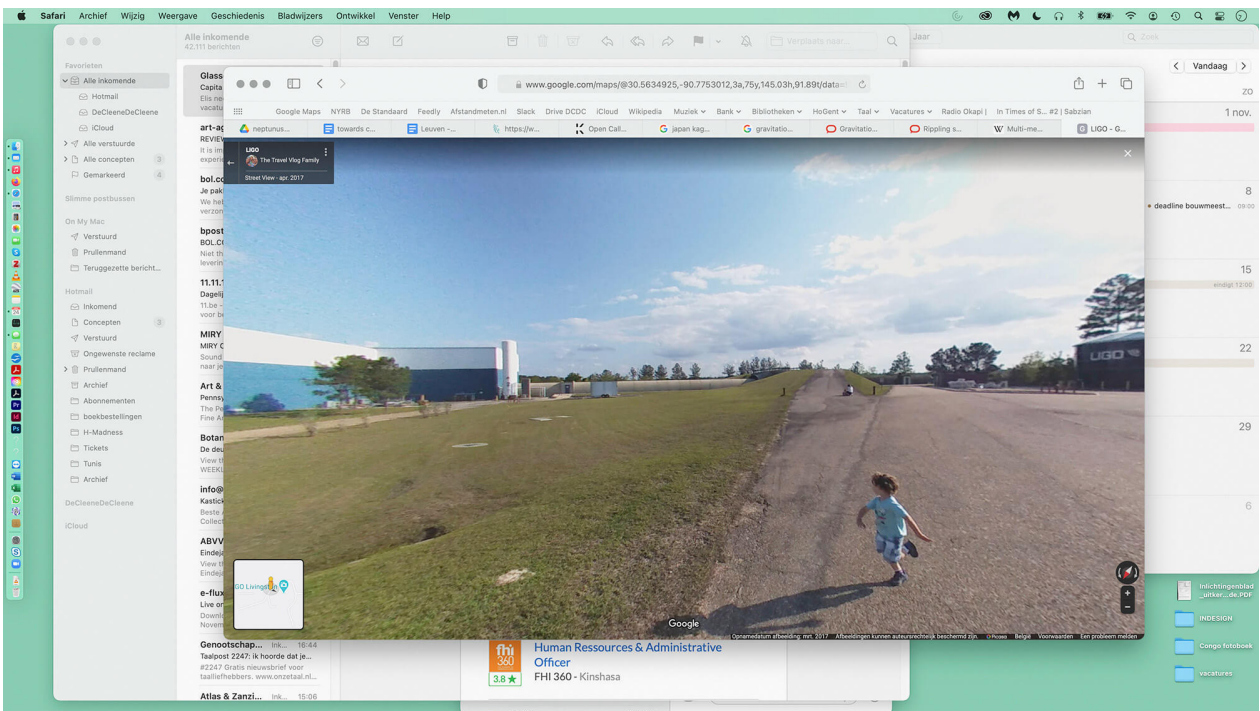
category
archaeology, economy, family, numismatics, collecting

12:48:54



To detect gravitational waves, physicists built enormous research centers, amongst others at Livingston, Louisiana. The facility mainly consists of two tunnels in an L-shape. Mirrors inside provide data. Disturbances from gravitational waves are miniscule. To prevent interference from outside, such as vibrations caused by people passing in the neighbourhood, the mirrors have to be detached from the earth. They 'float', suspended by glass fibers in a pendulum-like construction.

As I was watching my screen, a courier was on his way to deliver a book (Noel-Todd, J. *The Penguin Book of the Prose Poem: From Baudelaire to Anne Carson*. London: Penguin, 2019).



type	date	filename	size	author
screenshot	24.11.2020	LIGO.png	6,9MB	Arnout De Cleene

category
 physics, seismology, mirror, interference, book, architecture, mistake

12:49:05

Five white boulders close off a shortcut for motorists who attempt to cut the bend in the road. The southernmost roof's pitch runs opposite to the landscape's slope. The lower roofline is, therefore, only about one meter above a small, triangular patch of grass which is hidden from view by a hedge. In summer, when the roofing gets hot and soft, text and drawings get pressed or carved into it.



type	date	filename	size	author
screenshot	14.04.2021	Schermafbeelding 2021-05-05 om 22.37.00.png	16,98MB	Michiel De Cleene

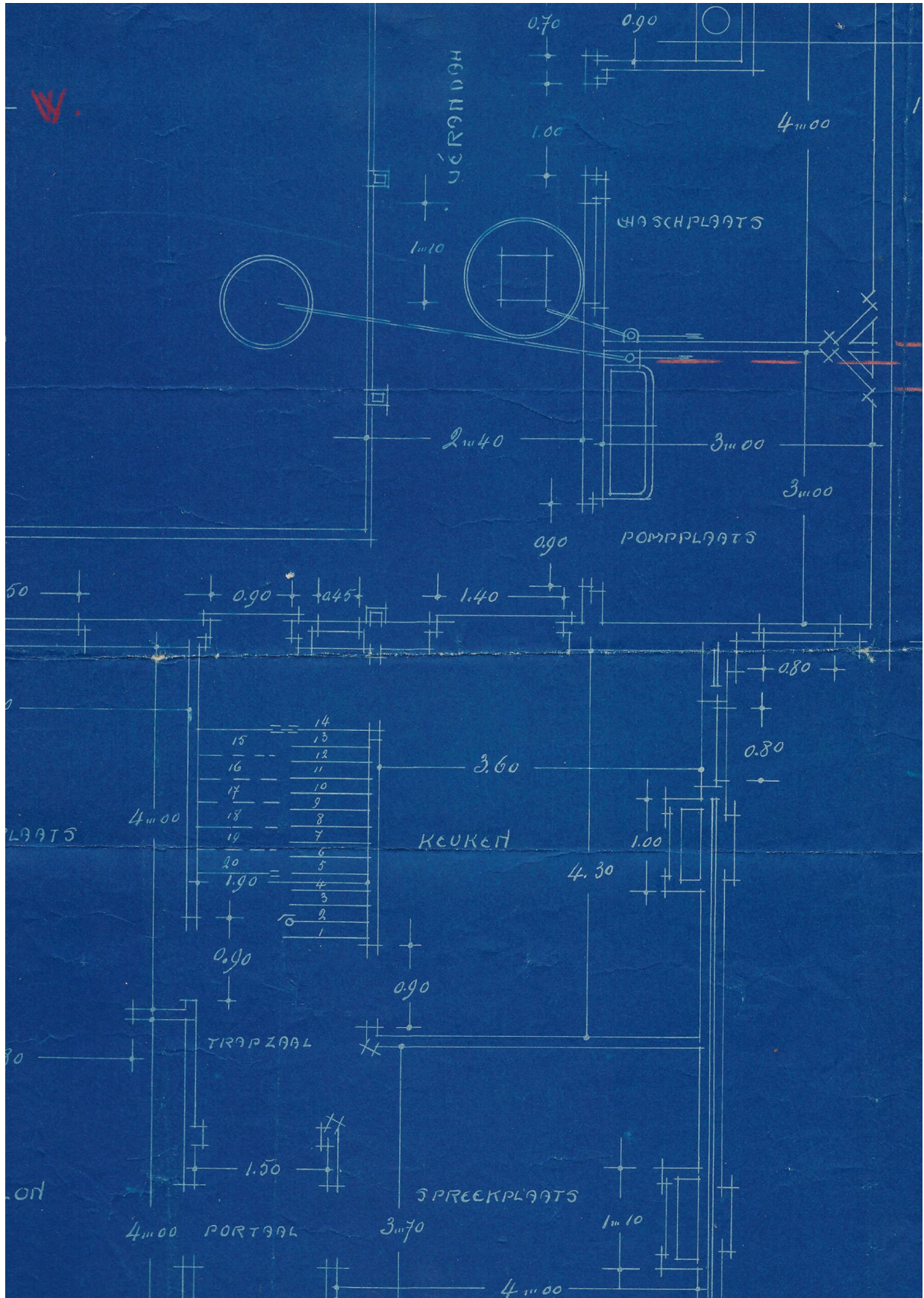
category
automobile, crash, landscape, map/plan, parking, roofing, sign

12:49:07

In the archive of the architect O. Clemminck, there is a piece of a plan of a building in a suburb in Gent. It presents the ground floor. There is a kitchen, a salon, an eating place, a meeting place. The missing part would have stated the exact address, the name, and maybe the profession of the owners. The plan of the first floor might have given an indication of the number of (anticipated) family members, based on the number and size of sleeping rooms.

At the southern edge of (the plan of) the lot, O. Clemminck has drawn a laundry room that gives out to a *vérandah*. The spelling of the Dutch word – nowadays written as *veranda* – is remarkable, as is its etymology, which is unclear and a matter of debate among scholars. The word might have Portuguese (*varanda*: railing) and Catalan roots (*baranda*: barrier), maybe also origins in the Lithuanian Žemaitan dialect (*varanda*: loop plaited from flexible wings) and might also be traced back to a Sanskrit root (*varandaka*: rampart separating two fighting elephants).

The *vérandah* O. Clemminck proposes is 2,40 meters by, at least, 2,80 meters.



type	date	filename	size	author
scan	28.12.2021	Foto_2021-12-27_194400.pdf	7,2MB	Arnout De Cleene

category
 architecture, archive, family, house, map/plan, O. Clemminck

The weeds and bushes on what over the years has become savanna are being chopped to clear the ground to replant trees and reinstate the forest. During the dry season, forest fires are frequent. In between the future lots of planted trees, firebreaks are made to keep fires from spreading. Wires are used to measure the required distance between plant beds and to keep a straight line. The sun is sinking. In a bit, the workers will return home and the field will empty out. In a couple of years, the Acacias, Ebben trees, *Millettia laurentii* and Umbrella trees will testify to the strings.



type
video

date
10.06.2021

filename
MVI_2082.MOV

size
285MB

author
Arnout De Cleene

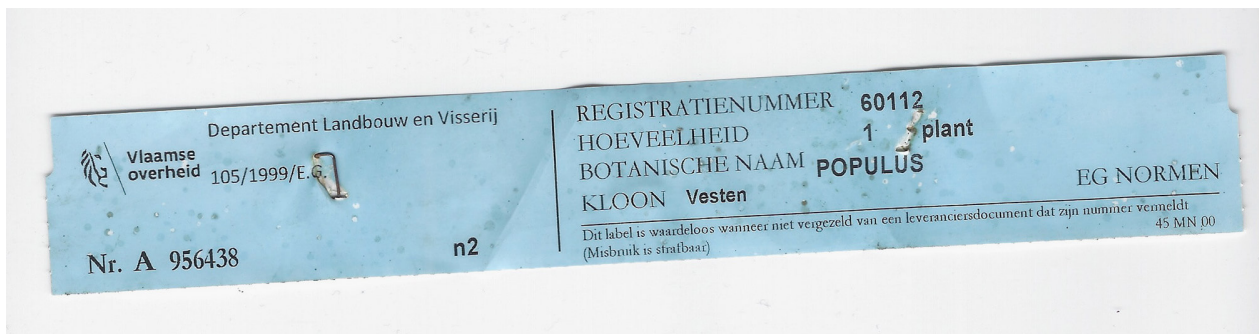
category
RDC, botany, tree, landscape

12:49:11

A Sunday stroll near my parents' house. Along one of the roads between the fields, old poplars have been felled. Young trees have been planted. Each one has a baby blue coloured label, identifying them as Poplar tree, and, more specifically, the 'Vesten' cultivar. This cultivar is planted since it is one of the cultivars known for its resistance with regards to bacteria, diseases and insects. The tags on the trunks have staples keeping them together. They're like bracelets. Come spring, the expanding diameter of the fast growing poplar species' trunk will tear them apart.

Sources

- Steenackers, M., Schamp, K., & De Clercq, W. (2018). De INBO variëteiten van populier, een aanwinst voor de Europese populierenteelt. *Silva belgica : tijdschrift van de koninklijke belgische bosbouwmaatschappij = bulletin de la société royale forestière de Belgique*, N°4/2018, 40-47. [5].
- https://purews.inbo.be/ws/portalfiles/portal/15044340/Dossier_populier_I_NBO_KBBM.pdf



type	date	filename	size	author
scan	25.01.2021	Handgeschreven_2021-01-25_091710.jpg	823KB	Arnout De Cleene

category
botany, tree, packaging, house, epidemic, family

12:49:14

Anastasio Guzmán was a Spanish pharmacist and naturalist. He spent most of his career in South-America. He died in 1807 during an expedition in the Cordillera de Los Llanganates in Ecuador, in search of the lost treasure of the Incas. Some time after his death, his colleague Juan José Tafalla suggested naming a certain genus of plants after his friend.

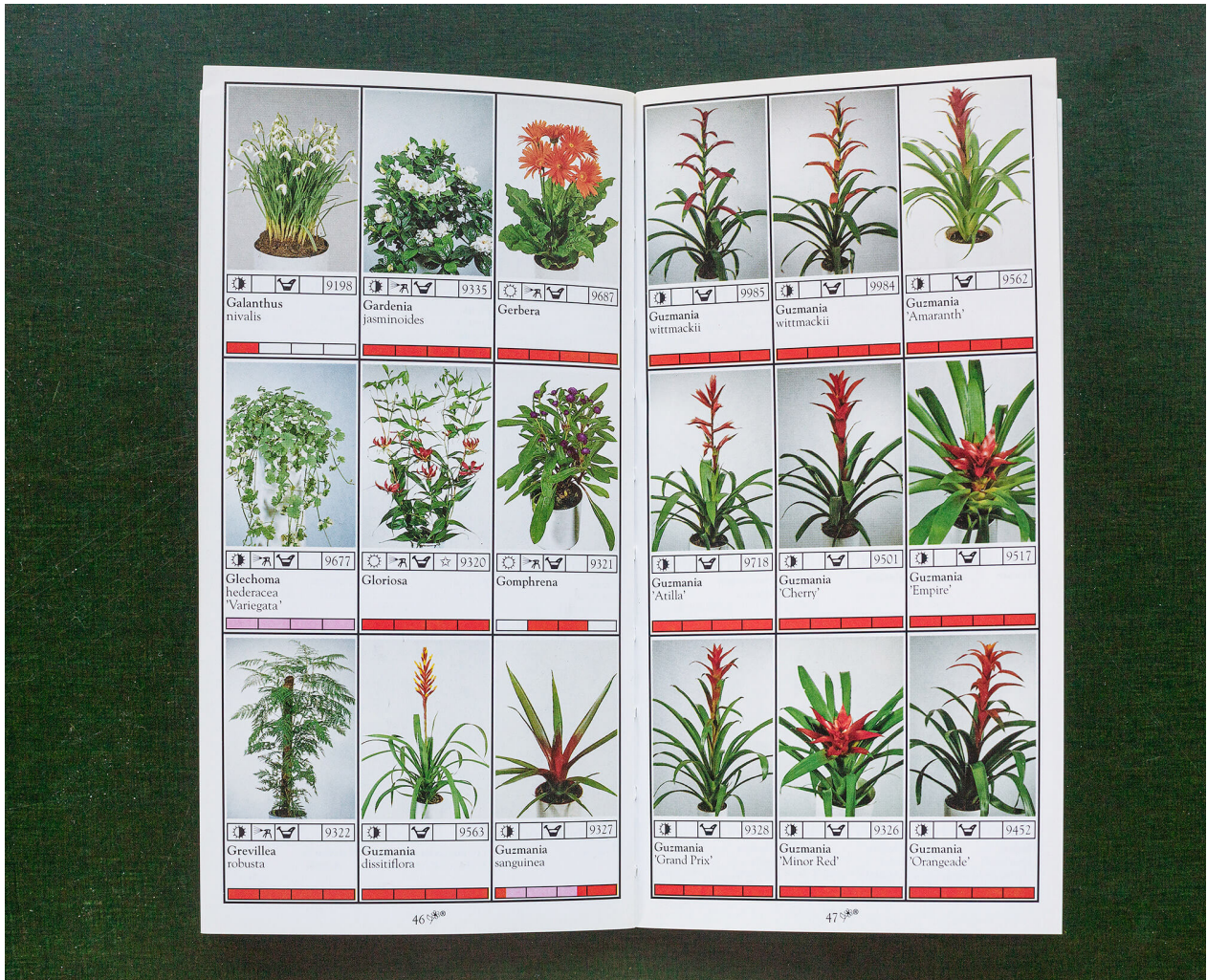
Guzmanias are mainly stemless, evergreen, epiphytic perennials native to Florida, the West Indies, southern Mexico, Central America, and northern and western South America. They are found at altitudes of up to 3.500m in the Andean rainforests.

The symbols beneath the photographs indicate that these Guzmanias require full light, but it is advised to avoid bright sunlight in spring and summer (HALF WHITE, HALF BLACK SUN), the compost should be kept moderately moist during growth, allowing it to dry slightly between each watering period (HALF FILLED WATERING CAN). Unlike, for instance, the *Grevillea Robusta*, a *Guzmania* does not require being sprayed regularly (SPRAYER). The four digit code is the AUCTION CODE: 'Every product has a code. This code is indispensable for the trade.' The COLOURED BAR at the bottom shows the availability of a plant quarterly. RED means good, PINK means moderate and WHITE means not available.

The introduction to this booklet mentions that '[p]rinted colours are often not as accurate as the colours of the plants themselves, which is why it is possible that colours shown in pictures in this booklet may be a little different from the colours of the real pot plant.'

Sources

Bloemenbureau Holland. *Potplanten, pot plants, topfpflanzen, plantes en pot, piante da vaso, planta en particular* 1995/96. Leiden: Bloemenbureau Holland, 1995.



type
photograph

date
12.04.2021

filename
_44A0323.dng

size
45,38MB

author
Michiel De Cleene

category
book, botany, decoration, precipitation, replica/copy, tree, sign

12:49:17

Because an acquaintance of the family was a missionary, the postage stamp collection had a large quantity of stamps from the Philippines. You had to boil water, hold the empty envelope above it, wait until the glue and the missionary's saliva loosened and evaporated, and then gently peel off the stamp. Then, it was put on a piece of pink blotting paper. Once dry, the stamp was slid into a tailor-made booklet.

Between a Horta building's facade and King Baudouin's portrait, there are exotic fish, religious scenes, butterflies, and advertisements for NGOs.

Mango is the Philippines' national fruit. Pope John Paul II visited it in 1995. There was a guerrilla unit in Northwest Pampanga during WWII.



type	date	filename	size	author
scan	23.01.2022	2022-01-22_213134.png	27,7MB	Arnout De Cleene

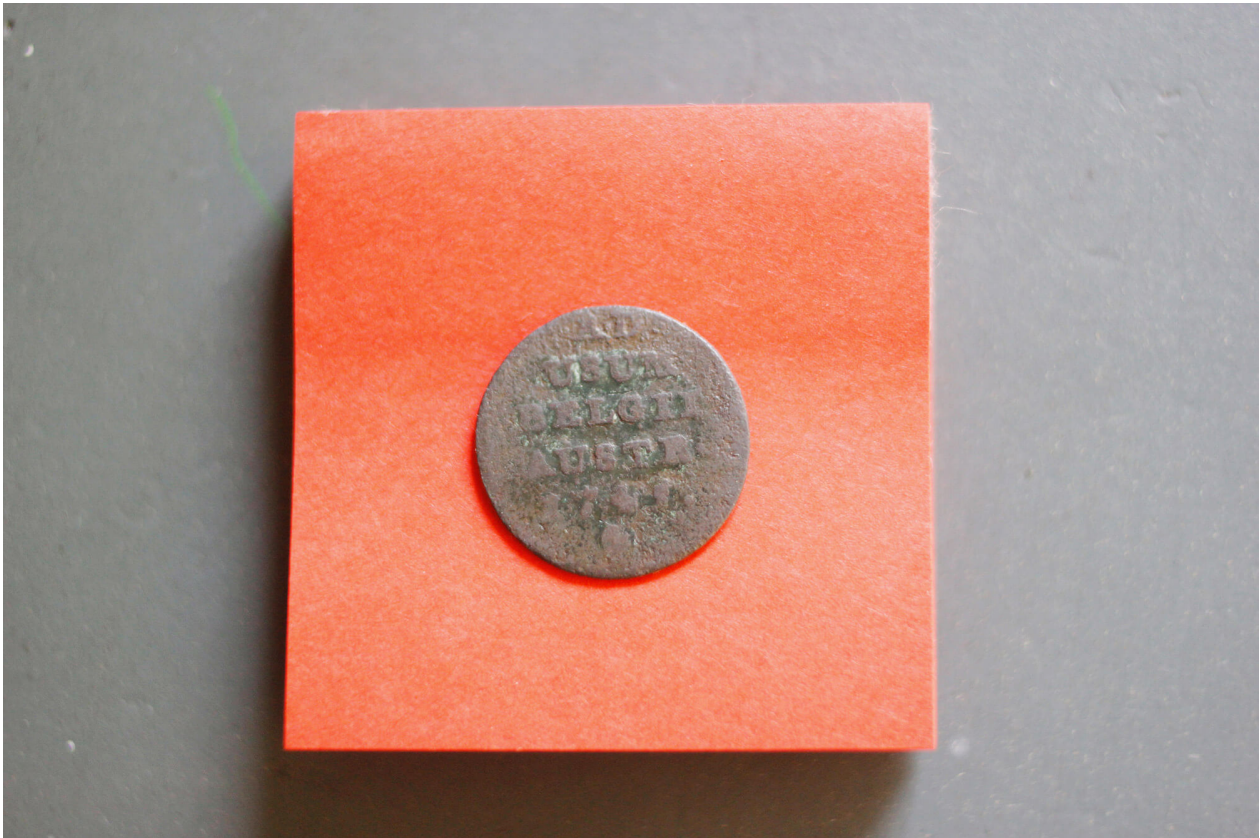
category
animal, architecture, book, collecting, fruit, sticker

12:49:20

The oldest coin in the collection has darkened over time, but upon inspection, the text 'AD USUM BELGII AUSTR' (left) and the contours of a (female) head (right) can be discerned. A quick search learns it stems from the middle of the 18th century. The coin was made and used in the Austrian Netherlands, reigned by Maria Theresa, who is the one depicted. My mother recollects finding it in the backyard when she was a kid.

About 40 years later, the euro was introduced. The ringbinder with my mother's coin collection was taken from the shelf. A dilemma came to the fore: we wondered if we should keep one of each existing Belgian coin and banknote and put them in the binder, alongside Maria Theresa, or if we should exchange them for the new European currency. The decision to keep a coin of five Belgian francs was not difficult to make, but as the amount raised, the answer was increasingly hard to give. This was an assessment of the old currency's emotional and projected historical value, compared to its current financial worth. It was a decision based on investment principles.

To accentuate the value of the Maria Teresa kronenthaler of 1 liard, I put the coin on a pile of red post-it-notes when photographing it. Coins like these are sold on eBay for prices ranging from 0,70 euros to 16 euros.



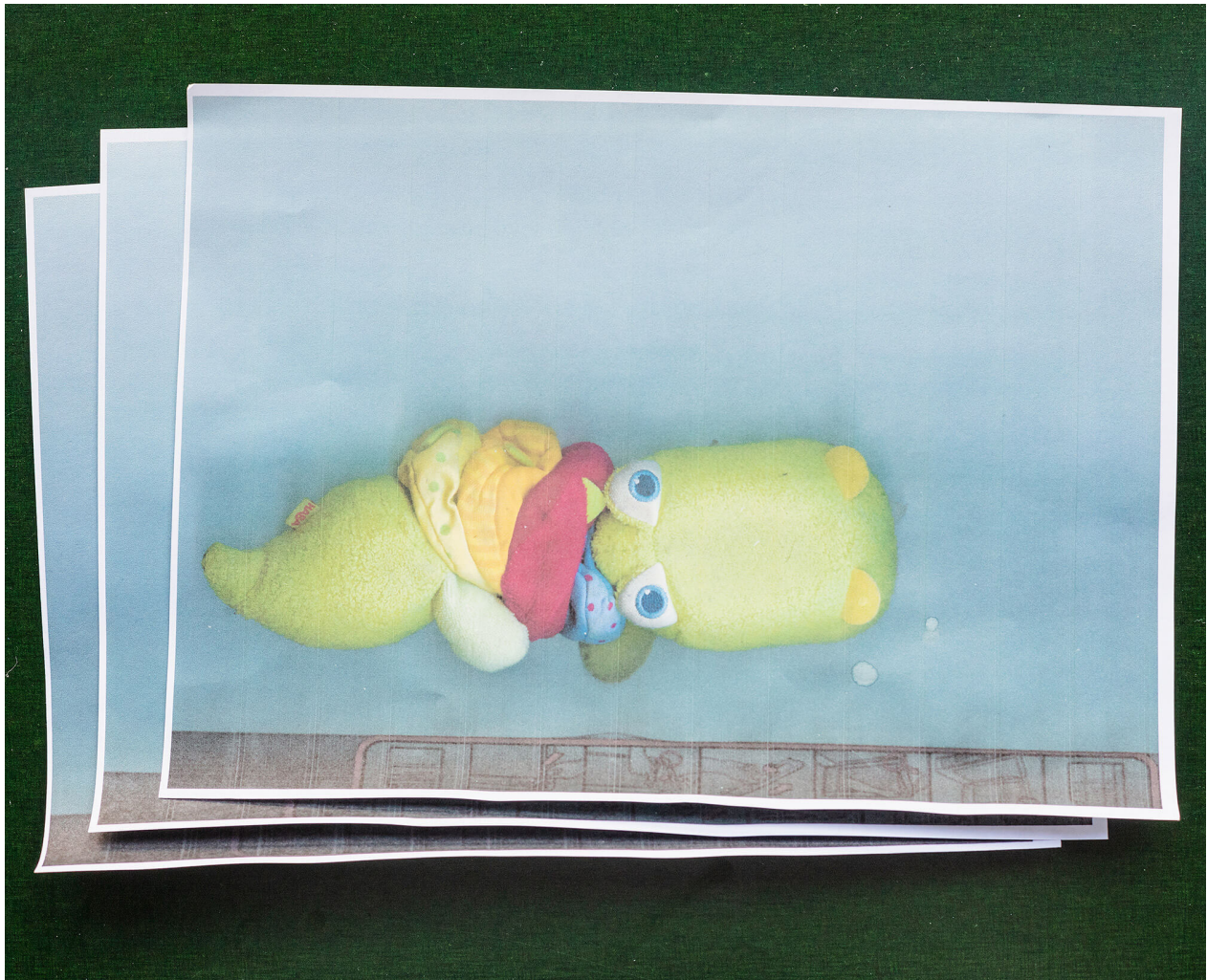
type	date	filename	size	author
photograph	29.07.2021	_MG_6826.JPG; _MG_6825.JPG	6,7MB; 7,7MB	Arnout De Cleene

category
archaeology, economy, family, numismatics, collecting

12:49:23



Our one year old's favourite toy he's not supposed to play with is the *HP Officejet Pro L7590 All-in-one* in my office. I have given up on forbidding him to play with it. We have a new game: he brings me one of his other toys, we put it on the flatbed, close the lid – as far as possible –, press the button 'START COPY – COLOR' and wait for the print to come out of the machine. When we place the original onto the copy, he laughs. So far we have copied his blue pacifier, his planet-earth-bouncy-ball and his rattling crocodile.



type
photograph

date
16.02.2021

filename
_44A8728.dng

size
50,04MB

author
Michiel De Cleene

category
animal, archive, decoration, house, replica/copy, technology, trompe l'oeil, family

12:49:27

When I grew up, my parents told me that the number of raisins in the local baker's raisin bread attested to the result of the most recent soccer match of KAA Gent. A victory was celebrated by throwing more raisins into the dough than usual, a loaf following a painful loss was hardly a raisin bread at all.

The baker retired long ago. Today my two-year-old son picked out all the raisins from his slice of bread. KAA Gent's last game was a tie against Union.



type
photograph

date
30.12.2021

filename
IMG_9810.HEIC

size
1,2 MB

author
Michiel De Cleene

category
family, food

12:49:31

Shortly after crossing the Thur the couple reaches their car. They're freezing. As the sun sets they drive through the mountainous landscape. The heating hurts their fingers.

The next day, they return, but the scene looks different. It's warmer. The Thur appears to flow faster.



type	date	filename	size	author
photograph	07.12.2021	IMG_0518b.jpg	4,38 MB	Michiel De Cleene

category
automobile, family, landscape, parking

12:49:35

Where once there was twelve million cubic metres of water, excavators and trucks are moving dirt and rocks that have been hidden from sight for 56 years; piling them up into a temporary dam: a *batardeau*.



type	date	filename	size	author
photograph	05.12.2021	IMG_0512b.jpg	6,68 MB	Michiel De Cleene
category	drought, landscape, repair			

12:49:37

Seven years after the devastating flood, in 1954, the building of the dam is decided upon. Between 1959 and 1963 the infrastructure is built, and the reservoir gets filled with water in 1964 to act as a buffer for sudden floods and to guarantee a flowing Thur through the highly industrialized area downstream.



type	date	filename	size	author
photograph	02.12.2021	IMG_0510b.jpg	5,85 MB	Michiel De Cleene

category
architecture, drought, economy, landscape, precipitation

12:49:39

It snows on December 19, but the situation changes on the 22nd with the arrival of an Atlantic low-pressure area, bringing masses of hot and humid air. Thaw follows.

And then, it snows again on December 26 and 27, before the arrival of a new warm front on the same day. A significant and brutal rise in temperature ensues: at Lac Noir, at 920 m, the temperature shoots up from 0,3 °C on December 27 at 7 AM to 7,4 ° C on the 28th at 9 PM.



type
photograph

date
30.11.2021

filename
IMG_0506b.jpg

size
5,31 MB

author
Michiel De Cleene

category
landscape, precipitation

12:49:40

Fairly detailed map of the two major marble quarries on the island of Tinos, Greece. The spontaneous route-advice was prepared by a local marble worker, P.D., in the Karia region of the island on a locally extracted, green marble slab. The waved lines represent roads traversing uphill, while the straight lines represent roads following a contour line of the topography.

‘Tell your friend that the wine is for girls; it’s very sweet,’ the marble worker alerted my travel companion K.S. after offering us local sweet wine. The workshop smelled like boiled meat and bones.

Notes on map from left to right, top to bottom:

1. Towards Vathi
2. Quarry
3. incomprehensible
4. Towards Vathi Bleu
5. Isternia
6. Pirgos

Notes

Márk Redele pursues projects that fundamentally relate to architecture and its practice but rarely look like architecture. www.markredele.com



type
photograph

date
19.11.2021

filename
marmar_.jpg

size
3,47 MB

author
Márk Redele

category
book, map/plan, marble, sign

