

org is an online platform, collecting, describing, presenting and generating documents of all sorts. It documents documents.

Your path through the collection lead along Mould, Mirror, Iguanodon, Passing Time Near a Particle Accelerator, Mushroom Picking Prohibited, Mammoth Tree and the Golden Spurs, The Authenticity in the woods of the Bosque Protector de Arraiján, Gatun Locks, Crash (2), We Welcome Comments, A flowering juneberry signals a beekeeper's spring, Roofing (5) – UDI, Roofing (3) – Simon, tu me manques, Guzmania, Schelp, March, Index

What constitutes a 'document' and how does it function?

According to the *Oxford English Dictionary*, the etymological origin is the Latin 'documentum', meaning 'lesson, proof, instance, specimen'. As a verb, it is 'to prove or support (something) by documentary evidence', and 'to provide with documents'. The online version of the *OED* includes a draft addition, whereby a document (as a noun) is 'a collection of data in digital form that is considered a single item and typically has a unique filename by which it can be stored, retrieved, or transmitted (as a file, a spreadsheet, or a graphic)'. The current use of the noun 'document' is defined as '*something* written, inscribed, etc., which furnishes evidence or information upon any subject, as a manuscript, title-deed, tomb-stone, coin, picture, etc.' (emphasis added).

Both 'something' and that first 'etc.' leave ample room for discussion. A document doubts whether it functions as something unique, or as something reproducible. A passport is a document, but a flyer equally so. Moreover, there is a circular reasoning: to document is 'to provide with documents'. Defining (the functioning of) a document most likely involves ideas of communication, information, evidence, inscriptions, and implies notions of objectivity and neutrality – but the document is neither reducible to one of them, nor is it equal to their sum. It is hard to pinpoint it, as it disperses into and is affected by other fields: it is intrinsically tied to the history of media and to important currents in literature, photography and art; it is linked to epistemic and power structures. However ubiquitous it is, as an often tangible thing in our environment, and as a concept, a document *deranges*.

the-documents.org continuously gathers documents and provides them with a short textual description, explanation, or digression, written by multiple authors. In *Paper Knowledge*, Lisa Gittelman paraphrases ‘documentalist’ Suzanne Briet, stating that ‘an antelope running wild would not be a document, but an antelope taken into a zoo would be one, presumably because it would then be framed – or reframed – as an example, specimen, or instance’. The gathered files are all documents – if they weren’t before publication, they now are. That is what the-documents.org, irreversibly, *does*. It is a zoo turning an antelope into an ‘antelope’.

As you made your way through the collection, the-documents.org tracked the entries you viewed. It documented your path through the website. As such, the time spent on the-documents.org turned into this – a new document.

This document was compiled by _____ on 03.02.2022 20:22, printed on _____ and contains 17 documents on 36 pages. (<https://the-documents.org/log/03-02-2022-3752/>)

the-documents.org is a project created and edited by De Cleene De Cleene; design & development by atelier Haegeman Temmerman.

the-documents.org has been online since 23.05.2021.

Notes

- De Cleene De Cleene is Michiel De Cleene and Arnout De Cleene. Together they form a research group that focusses on novel ways of approaching the everyday, by artistic means and from a cultural and critical perspective.
www.decleenedecleene.be / info@decleenedecleene.be
- This project was made possible with the support of the Flemish Government and KASK & Conservatorium, the school of arts of HOGENT and Howest. It is part of the research project *Documenting Objects*, financed by the HOGENT Arts Research Fund.

Sources

- Briet, S. *Qu'est-ce que la documentation?* Paris: Edit, 1951.
- Gittelman, L. *Paper Knowledge. Toward a Media History of Documents*. Durham/ London: Duke University Press, 2014.
- *Oxford English Dictionary Online*. Accessed on 13.05.2021.



Flanders
State of the Art



howest

At a dental practice, the white Alligat®-powder is mixed with the right amount of water to get a mouldable dough that is pressed upon a patient's teeth. After thirty seconds, the Alligat®-dough stiffens and takes on a rubber-like quality. At that point, still white, it must be removed from the patient's mouth. Over the next few hours, the mould turns increasingly pink as the substance becomes less humid. Now, it can be used as a mould to create a positive master cast of the patient's teeth.

Outside the dental practice, the powder's possibilities remain to be fully explored.

Notes



Sources

- First published as part of De Cleene De Cleene. 'Amidst the Fire, I Was Not Burnt', *Trigger (Special issue: Uncertainty)*, 2. FOMU/Fw:Books, 25-30



type
photograph

date
27.01.2022

filename
_44A3429.tif

size
36,81 MB

author
De Cleene De Cleene

category
manual, medicine, packaging, repair, replica/copy

20:20:24

On the online thrift shop 2dehands.be the homepage generates a 'for you' section. On November 9th this section listed, among other things, a picture of the sky on a patch of concrete. On closer inspection, it became clear that it was the sky's reflection in a mirror with a red frame and four lightbulbs in it, the kind you might see at the hairdresser's or backstage in a television studio or theatre. The seller estimates the mirror's current value to be 45,00 EUR. The listing includes five photographs. In the fifth one, the object for sale reflects a bucolic landscape: a blue sky, white clouds, some trees and a fragment of a barn.



type	date	filename	size	author
screenshot	16.01.2022	Schermafbeelding 2021-11-09 om 20.54.40.png	2,92 MB	Michiel De Cleene
category				
economy, landscape, mirror				

20:20:58

I recognized it in a flash, the late Jurassic-early Cretaceous herbivore looming dangerously over the road I was cycling on. I thought of *Some Windy Trees*.¹

A utility pole (425638, 07/99, 07/2002, COBRA), electrical wires, a hawthorn (*Crataegus*) and an old man's beard (*Clematis vitalba*). A symbiosis.

Notes

1 Delbrouck, V. *Some Windy Trees*. Loupaigne: Wilderness, 2013.



type	date	filename	size	author
photograph	17.10.2021	IMG_2711.jpg	4,66 MB	Michiel De Cleene

category
angst, animal, book, botany, dusk, mistake, tree, trompe l'oeil, wind

20:21:06

On the second to last day of a research visit at CERN, there was some spare time in the schedule. I took a long walk towards building 282 in search of some excavation samples: cylindrical pieces of rock that were preserved when the tunnel was dug, glued to a block of wood and frequently exhibited in museums over the last three decades as material evidence of the earthwork and as a witness to the depth. The route led me along the back of building 363 where the wind caused young trees – now gone – to scuff the facade over time.

Notes

First published in: De Cleene, M. *Reference Guide*. Amsterdam: Roma Publications, 2019, as W.569.EXC CERN, Towards Building 282, in search of excavation samples



type
photograph

date
11.07.2021

filename
cern_011.tif

size
57,57 MB

author
Michiel De Cleene

category
archaeology, architecture, archive, landscape, physics, Reference Guide, technology, tree, wind

20:21:18

I must have driven past this rocky landscape about sixteen times, going back and forth between viewpoints and the house the parents of a friend let me stay in. On the last day, I left early for the airport, pulled into a lay-by, took my tripod and camera out of the trunk of the red Volkswagen Polo rental car and made two photographs.¹ It was only when I got home, had the film developed, scanned it and was removing dust particles from the file, that I discovered the hand painted text on the rock: ‘PROIBIDO BUSCAR SETAS’.

Notes

1.





type	date	filename	size	author
photograph	19.05.2021	Untitled99993-dustfree-nosharpen-crop2.psd	365,37MB	Michiel De Cleene
category	automobile, dusk, food, landscape, parking, sign, tree			

20:21:31

Between the rhinos and the kangaroos in the Antwerp Zoo a wooden footpath curves through a grove of *Sequoiadendron Giganteum* trees. In the middle of this Californian forest, visitors find the giant slice of a felled tree of the same species. It was brought to the zoo in 1962 and was approximately 650 years old at the time. Eleven labels point out significant moments in history on the tree's growth rings. They range from zoo- and zoology-related moments (for instance: '1901: The Okapi is described as a species', or '1843: Foundation of the RZSA and opening of the Zoo', or '1859: Darwin publishes *The Origin of Species*', etc.), to cultural and historical milestones ('1555: Plantijn starts publishing books in Antwerp', or '1640: Rubens (baroque painter) dies', or '1492: Columbus in America'). Another label points to the last growth ring and reads: '1962: this tree is felled and this tree disc is installed at the Zoo.'

The label pointing to the centre of the tree implies a simultaneity between the tree's first growth year and the Battle of the Golden Spurs in 1302.

Notes

On closer inspection the slice seems to consist of two halves that were put together like a jigsaw puzzle. The resulting gap is skilfully patched with what appears to be wood from the same species – possibly even the same mammoth tree.



type
photograph

date
15.05.2021

filename
IMG_6958.HEIC

size
1,9MB

author
Michiel De Cleene

category
animal, book, botany, card, tree

20:21:42

The Authenticity bunkered crude fuel in the Panama Bay. She navigated back and forth between the artificial island Isla Melones and ships leaving or waiting to enter the Panama Canal. On February 14th 2015 she had been moored for a couple of days near the Centennial bridge when the AIS-transponder momentarily signalled the ship's position in the woods of the Bosque Protector de Arraiján. Afterwards no signal of the ship was received for 41 days, until she reappeared near the port of Bahia Las Minas, at the other side of the Panama Canal.

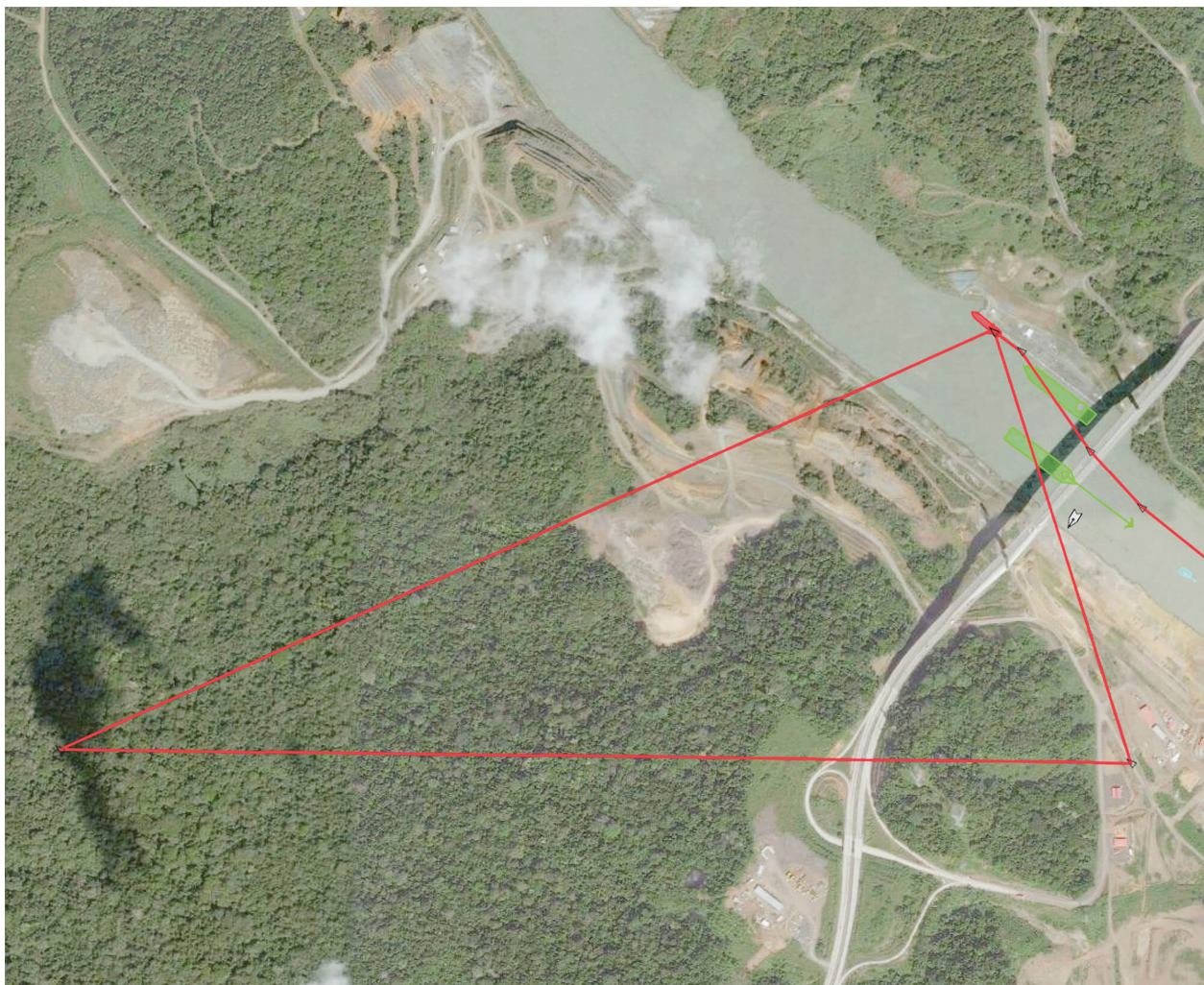
Notes

First published in: De Cleene, M. *Reference Guide*. Amsterdam: Roma Publications, 2019

Sources

Marine Traffic, Authenticity (Caribe Trader, PA), latest position, 09°01'40,71" N 79°38'18,59"W, viewed 14.02.2015, <http://www.marinetraffic.com>

The Authenticity in the woods of the Bosque Protector de Arraiján



type
screenshot

date
10.05.2021

filename
caribe.jpg

size
17,33MB

author
Michiel De Cleene

category
economy, encyclopaedia, interference, landscape, map/plan, Reference Guide, sea, technology, tree, data storage

20:21:46

On March 23th 2015, a high pressure system above Panama Bay blew strong winds landwards. At the Gatun locks, one of the webcams overlooking the Canal neglected the traffic and briefly captured its own images. The ship's presumed passage through the Gatun locks wasn't recorded by this camera and the AIS-transponder did not save any data of the ship's transit from the Pacific to the Atlantic side of the canal: the Authenticity managed to swap oceans undetected.

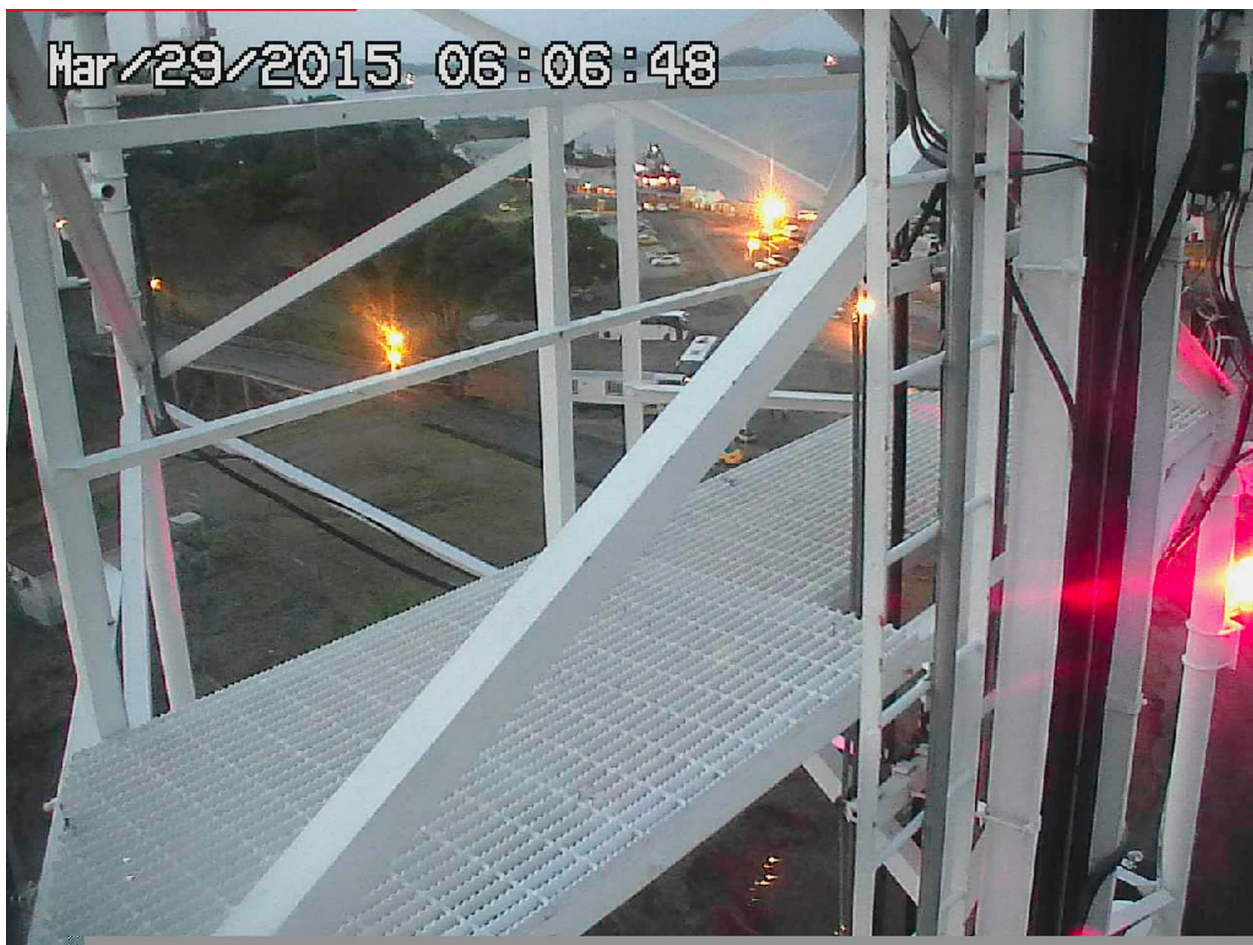
On February 16th 2016, the transponder still signals the ship near the port of Bahia Las Minas. The current is calm, the ship has been practically immobile for a year.

Notes

First published in: De Cleene, M. *Reference Guide*. Amsterdam: Roma Publications, 2019

Sources

Webcam Gatun Locks, Panama Canal, <http://www.pancanal.com>



type	date	filename	size	author
video	10.05.2021	gatun-cam3.mp4	53,16MB	Michiel De Cleene

category
animal, data storage, economy, encyclopaedia, interference, landscape, precipitation, Reference Guide, sea, technology

20:21:51

Near Avenue 61 on an artificial island close to Seef, a truck is being towed after the driver lost control over the vehicle and flipped it onto its side. A warm wind blows in from the Persian Gulf.

A police officer signals us to come closer. 'Why are you taking pictures?' he asks. 'This is just an accident. You have to delete the pictures from your phone. Now.' After checking the pictures-folder on our phones, he gets in his car, drives a few metres, stops the car and rolls down his window. 'And don't do it again!' he yells. Then he drives off, raising a cloud of sand in his wake.

Notes

Photograph taken and recovered from my trash bin on 18.12.2020.



type	date	filename	size	author
photograph	08.05.2021	IMG_5071.jpeg	2,71MB	Michiel De Cleene

category
Bahrain, crash, data storage, drought, government, interference, mistake, parking, sand, technology

20:21:57

Robert Nemiroff and Jerry Bonnell's lesser known project (R.N. and J.B. being the creators of Astronomy Picture of The Day), was making websites containing over a million of digits of square roots of irrational numbers, e.g. seven. 'They were computed during spare time on a VAX alpha class machine over the course of a weekend. [...] We believe these are the most digits ever computed for the square root of seven on or before 1 April 1994.' Elsewhere, R.N. states: 'They are not copyrighted and we do not think it is legally justifiable to copyright such a basic thing as the digits of a commonly used irrational number.' If one wanted to get a copy of the 10 million digits of the square root of the number e R.N. and J.B. computed in their spare time, one can send an email to R.N. at nemiroff@gssc.gsfc.nasa.gov.

Sources

- <https://apod.nasa.gov/htmltest/gifcity/sqrt7.1mil>
- https://apod.nasa.gov/htmltest/rjn_dig.html
- <https://apod.nasa.gov/htmltest/rjn.html>

What follows are the first 1 million digits of the square root of 7. Actually, slightly more than 1 million digits are given here. These digits were computed by Robert Nemiroff (George Mason University and NASA Goddard Space Flight Center) and checked by Jerry Bonnell (University Space Research Association and NASA Goddard Space Flight Center). They were computed during spare time on a VAX alpha class machine over the course of a weekend. We do NOT guarantee the accuracy of these digits. Although these digits have been checked once we encourage others to check them as well. We believe these are the most digits ever computed for the square root of seven on or before 1 April 1994. If anyone is aware of more digits we ask them to please alert us of their existence. We have computed at least 10 million digits of the square root of two as well as several digits of the number e and the square roots of other numbers. These are available on this mosaic server (URL: <http://antwpr.gsfc.nasa.gov/htmltest/rjn.html>). We welcome comments.

- Robert Nemiroff and Jerry Bonnell

The square root of seven =

2.6457513110645905905016157536392604257102591830824501803683344592010688232302
83627760392886474543610615064578338497463095743529888627214784427390555880107722
71715072972832389229968959486508726070097805420372382802371594110034193911600157
85255963059457410351523968027164073737990740415815199044034743194536713997305970
05051399692237545616097119027378154991633288287704000657570674651963497752083793
81811461309087647378659562433057994798128163230705483650107715617946361191553454
53647749482059309049484983403398900210478616673327950369392462257170537164925787
54832290732492671346980298949908037748251109227895568897919808814834090831685251
33535829539172211770714414974576907081989444441458972284741400303502353203719487
07382629318519364090832280596462783761021959794197089096354695861341181793067816
21360849101677835321255633463490021898146042255929503669562418692737327715022087
52309966469813203212818945478568020950635962446628550076190504139350447437123488
52233277362510045059621080672334698120004300514490251206257311759115423194459672
60497833404344683725636178255048160879406205511486397833055016369470076387773745
19511658095220474202064982102444056001996590904100285534069110102261166807200774
83070332613842826296809502470794656496344336830519708820348050486447262317930876
95722489377521119788376007845603903658809421599292501057753682356001720074065236
92473209967419778002535708540617794442886681589731184938101638162073015642647016
29841099690071341323798188477647769954391111945967670336972452475367740100245826
51593077528163005479339717508017899520565284447796194304512502890432970610508746
04492966897542257133380633247034508888234275409806214511439553803393190705392738
14520604335238180389333294731479058055670704161068722878104529957696633035133295
04704245502510500789645502552271857923370921821991843932537781386785650143790894
13002099040860186605228131329821735251716419633617853080179022873400337109527257
36428650922035916343820273976336550966714177816292894279884853951076819102168116
99677176780863793410667897509217050421558644370687652934899322442240273649792906
66842070305782257110537944215790013280304078494579431518120466309284152592404683
6528280272245853077841589423897395590959563491357495109757674781975590533726939
36521431268222909570986506137179452721677198255442288046052307455488310813325041
49932783468182066583447383366862454456169497251774270254688591746231942309355060
3889923535563446587292250736222828429821528790362384759555861643755472027361518
00826144981691174794610631845652307625691344410868551999982851633960745717970829
72776495645142655658205126240305961633868338746134237463526431296594527010213721
72174899143552932049575097114259427207988929665230498875939525378121455723193310
30690840194942118708515205734116214105775416917245804962369512932926647583857193
34312550616097509003957512063487575979549295499224726634074018815634940531052960
44658755646209433389479417623956283563497138016947322200667916212934359736711005
87608647371575881684122969500862937088695418127695765706218647593705890746227177
67431598986793495542319038774222444613699306088875639565284339127439923238796883
29062070715981239181401975323766238742188337107032853227711421862644792384439312
30317870021802156263998733847453103345993606899837633245900690816758898827355721
30478851132714468724152035311133859228865134587481955304126432221367858385542359

type	date	filename	size	author
screenshot	01.05.2021	Schermafbeelding 2021-05-01 om 16.44.39.png	340KB	Arnout De Cleene

category
astronomy, archive, data storage, irrational numbers, mathematics

When the juneberry (*Amelanchier Lamarckii*) flowers, the beekeeper knows it's time to add a first honey super to the hive. Winter's over and worker-foraging bees will fly out and come back with their stomachs full of nectar. To avoid larvae in the honey, the beekeeper will place a grid – the so-called queen excluder – between the main compartment of the hive and the honey super.



type
photograph

date
23.04.2021

filename
_44A0321.dng

size
45,58MB

author
Michiel De Cleene

category
animal, botany, food, tree

20:22:04

The torn off section of roofing on the grass has part of a text carved in it: 'UDI' and 'EN' are still legible. It must have come from another roof; the one shown in the photograph has no missing sections, nor visible repairs.

The roofing that is still on the garage shows a drawing of some kind. A floorplan for a squarish building with a supporting column along each side, or the layout for a tactical explanation, perhaps.



type
photograph

date
14.04.2021

filename
IMG_6509.jpeg

size
6,90MB

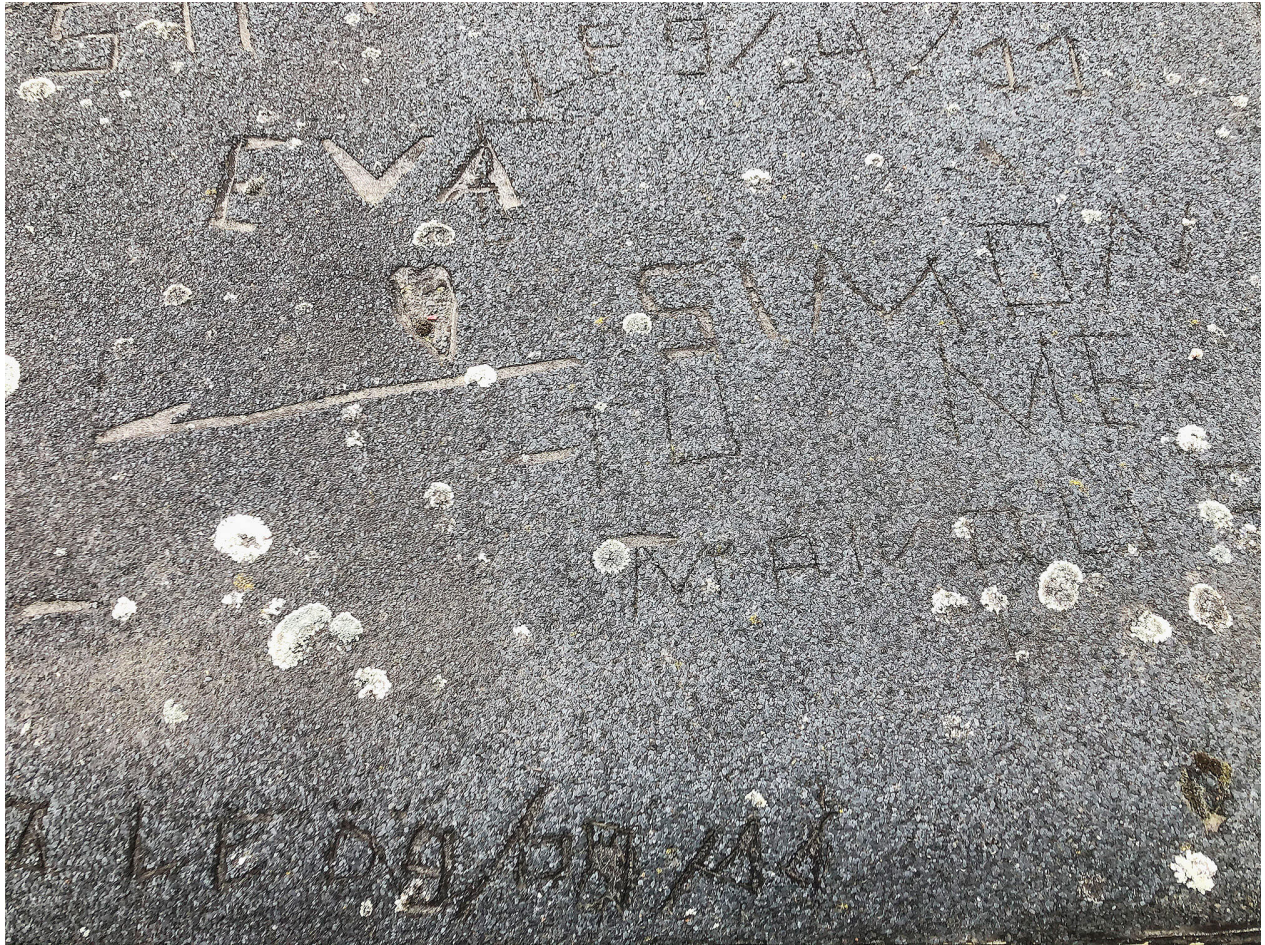
author
Michiel De Cleene

category
automobile, decoration, fissure, map/plan, parking, roofing, sign

20:22:20

In what order and by whom the various texts and drawings were carved into the soft roofing is unclear. To the right of 'EVA', a heart symbol and an arrow (pointing to the left), the roofing reads 'SIMON TU ME MANQUES'.

The short sentence usually – yet hastily – translates to 'Simon, I miss you'. However, in French the 'you' (*tu*) is the subject and has an active role, whereas the 'I' (*me*) is the direct object. In short: by his not being there, Simon actively effectuates hurt to the one who carved this text.



type
photograph

date
14.04.2021

filename
IMG_6512.jpeg

size
4,50MB

author
Michiel De Cleene

category
automobile, decoration, fissure, parking, roofing, sign

20:22:26

Anastasio Guzmán was a Spanish pharmacist and naturalist. He spent most of his career in South-America. He died in 1807 during an expedition in the Cordillera de Los Llanganates in Ecuador, in search of the lost treasure of the Incas. Some time after his death, his colleague Juan José Tafalla suggested naming a certain genus of plants after his friend.

Guzmanias are mainly stemless, evergreen, epiphytic perennials native to Florida, the West Indies, southern Mexico, Central America, and northern and western South America. They are found at altitudes of up to 3.500m in the Andean rainforests.

The symbols beneath the photographs indicate that these Guzmanias require full light, but it is advised to avoid bright sunlight in spring and summer (HALF WHITE, HALF BLACK SUN), the compost should be kept moderately moist during growth, allowing it to dry slightly between each watering period (HALF FILLED WATERING CAN). Unlike, for instance, the Grevillea Robusta, a Guzmania does not require being sprayed regularly (SPRAYER). The four digit code is the AUCTION CODE: 'Every product has a code. This code is indispensable for the trade.' The COLOURED BAR at the bottom shows the availability of a plant quarterly. RED means good, PINK means moderate and WHITE means not available.

The introduction to this booklet mentions that '[p]rinted colours are often not as accurate as the colours of the plants themselves, which is why it is possible that colours shown in pictures in this booklet may be a little different from the colours of the real pot plant.'

Sources

Bloemenbureau Holland. *Potplanten, pot plants, topfpflanzen, plantes en pot, piante da vaso, planta en particular* 1995/96. Leiden: Bloemenbureau Holland, 1995.



type
photograph

date
12.04.2021

filename
_44A0323.dng

size
45,38MB

author
Michiel De Cleene

category
book, botany, decoration, precipitation, replica/copy, tree, sign

20:22:29

Halfway March my dad started finding empty clam shells on the banks of the Zuidlede along the pasture where he used to herd sheep. He had never seen this type of clam before. There were easily seventy of them along a hundred metre stretch of riverbank.

He brought two specimens to someone he knows in the neighbouring provincial domain. She would look into it, she said, and that she would probably pass it on to someone at the educational department.

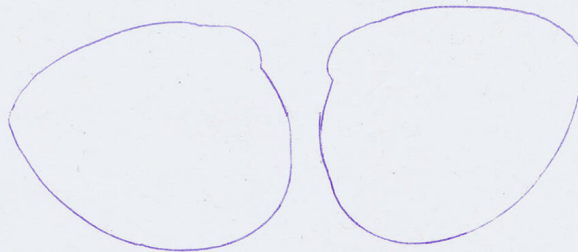
Yesterday he (my dad) received a printout of the Dutch wikipedia-page on the Brakwaterstrandschelp (*Rangia Cuneata*). On the page Paul (who sends his regards at the bottom of the document) traced around the scallops with a blue ballpoint pen.

My dad added in capitals – also with a blue ballpoint pen – that the *Rangia Cuneata* is an invasive species, native to the Gulf of Mexico. The first time it was observed in Europe was in Antwerp in August 2005, most probably they reached Europe in the ballast water tanks of large ships.

WIKIPEDIA

Brakwaterstrandschelp

De **brakwaterstrandschelp** (*Rangia cuneata*) is een tweekleppigensoort uit de familie van de Mactridae.^[1] De wetenschappelijke naam van de soort is voor het eerst geldig gepubliceerd in 1832 door Sowerby I.



Brakwaterstrandschelp

Taxonomische indeling

Rijk: Animalia (Dieren)
Stam: Mollusca (Weekdieren)
Klasse: Bivalvia (Tweekleppigen)
Orde: Veneroida
Familie: Mactridae
Geslacht: *Rangia*

Soort

Rangia cuneata

(Sowerby I, 1832)

Afbeeldingen op Wikimedia Commons

(en) World Register of Marine Species

(<http://www.marinespecies.org/aphia.php?p=taxdetails&id=156991>)

Portaal Biologie

Bronnen, noten en/of referenties

- Rosenberg, G.; Huber, M.; Gofas, S. (2012). *Rangia cuneata* (Sowerby I, 1832). Geraadpleegd via: World Register of Marine Species op <http://www.marinespecies.org/aphia.php?p=taxdetails&id=156991>

Geplaatst op:
09-03-2013

Dit artikel is een beginnetje over biologie. U wordt uitgenodigd om op bewerken (<https://nl.wikipedia.org/w/index.php?title=Brakwaterstrandschelp&action=edit>) te klikken om uw kennis aan dit artikel toe te voegen.

Overgenomen van "https://nl.wikipedia.org/w/index.php?title=Brakwaterstrandschelp&oldid=53202414"

Deze pagina is voor het laatst bewerkt op 13 feb 2019 om 20:55.

De tekst is beschikbaar onder de licentie Creative Commons Naamsvermelding/Gelijk delen, er kunnen aanvullende voorwaarden van toepassing zijn. Zie de gebruiksvoorwaarden voor meer informatie.
Wikipedia® is een geregistreerd handelsmerk van de Wikimedia Foundation, Inc., een organisatie zonder winstoogmerk.

<https://nl.wikipedia.org/wiki/Brakwaterstrandschelp>

7/04/2021

type
scan

date
11.04.2021

filename
schelp2.jpeg

size
7MB

author
Michiel De Cleene

category
animal, economy, encyclopaedia, food, replica/copy, sea, family

20:22:31

Interior of Eben-Ezer: photocopies and replicas of among other things an *Edit du Roy* and a photograph of a *Marche pour la liberté de conscience, 1956*. Handwritten labels are added beneath the blue frames. Due to limited lighting, and an interdiction to use the camera's flash, some labels are illegible, even when zooming in on the picture. It is unclear what the bottom left replica of a painting is (it has a Brueghelian air to it) and the upper right replica of a photograph.

The walls are made of flint, harvested from quarries in the neighbourhood.



type
photograph

date
03.03.2021

filename
IMG_0149.JPG

size
2,2MB

author
Arnout De Cleene

category
animal, architecture, archive, archaeology, brick, replica/copy, house

20:22:33

In John Berger and Jean Mohr's groundbreaking book *Another Way of Telling*, the index at the end gives information on the images printed throughout the book. Most of them are Jean Mohr's. In the section 'If each time...' – a wordless sequence of images which aims to develop an alternative way of telling a story – some images are referenced as 'documents'. The information is sparse. On page 138, the index states, there is a 'Document, detail'. It features a closeup of a knitted piece of fabric. It appears to be the same picture as seen on the first page of the section (p. 135), where it is printed beneath another image – a photo by Mohr of hands knitting. On this occasion, the image is indexed as 'Document'.

Sources

Berger, J. & J. Mohr. *Another Way of Telling*. London / New York: Writers and Readers, 1982.

- 113 Baby at breast (photo: Saul Landau)
- 123 Boy sleeping, May 25, 1912, Budapest (photo: André Kertesz)
- 125 Friends, September 3, 1917, Esztergan (photo: André Kertesz)
- 127 Lovers, May 15, 1915, Budapest (photo: André Kertesz)

If each time . . .

(All photos are by Jean Mohr unless otherwise indicated.)

- 135 J.'s hands
- 135 Document
- 136 A spring, Haute-Savoie
- 137 A spring in the *alpage*, Haute-Savoie
- 138 Document, detail
- 139 In a meadow, Val d'Aoste
- 139 Document, Russian painting
- 140 Village in the Tatry Mountains, Poland
- 141 Poland
- 142 Mother and child's hand, Great Britain
- 143 Poland
- 144 Document
- 145 A spring
- 146 J.'s hands
- 147 Paris
- 148 Tunisia
- 149 Geneva, bird tracks
- 150 School in the Township of Mieussy
- 151 Rabbit skeletons, Haute-Savoie
- 152 *Ibid*
- 153 Katya (photo: John Berger)
- 154 School
- 156 Foundation of a chalet, Norway
- 157 Document
- 158 Children going to the dairy, Fribourg, Switzerland
- 158 On the road to Sommand, Haute-Savoie
- 159 *Ibid*
- 160 Six in the morning at the dairy, Haute-Savoie

type	date	filename	size	author
scan	18.02.2021	Document_2021-02-18_092842.jpg	541KB	Arnout De Cleene
category				
book, cloth				

